

**ANNUAL**

**REPORT**

**1967**

PARKS

RECREATION AND

CEMETERIES DEPT.



**The City of Calgary**

PARKS, RECREATION and CEMETERIES DEPARTMENT

ANNUAL REPORT 1967

<u>Contents</u>	<u>Page</u>
Superintendent's Report	1
Centennial Activities	8
Calgary Centennial Planetarium	10
Heritage Park	12
Calgary Zoo	13
Tropical Aviary	14
Golf Courses	15
Recreation Division	17
Parks Operations Division	27
Parks Maintenance Section	28
Construction Section	31
Horticultural Section	32
Weed Control Section	35
Parks Services Division	37
Cemeteries	40
Statements for Expenditures and Revenues	43
Summary of Appropriations and Expenditures	52

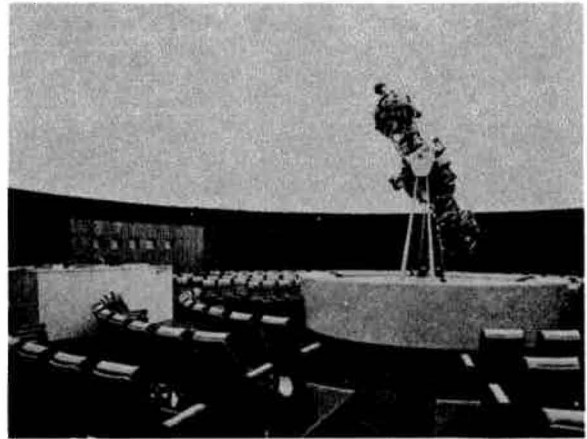
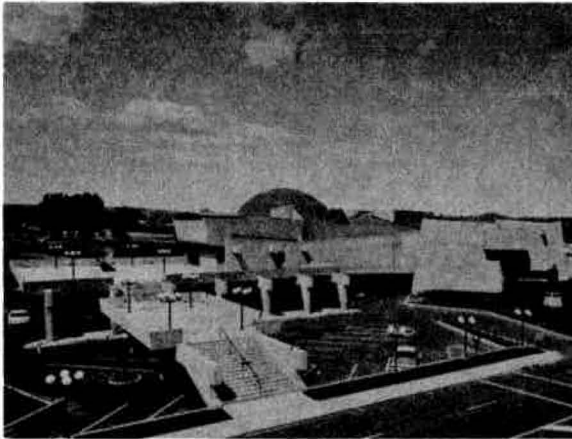
SUPERINTENDENT'S REPORT FOR THE YEAR OF 1967

His Worship The Mayor,  
Members of City Council,  
Board of City Commissioners.

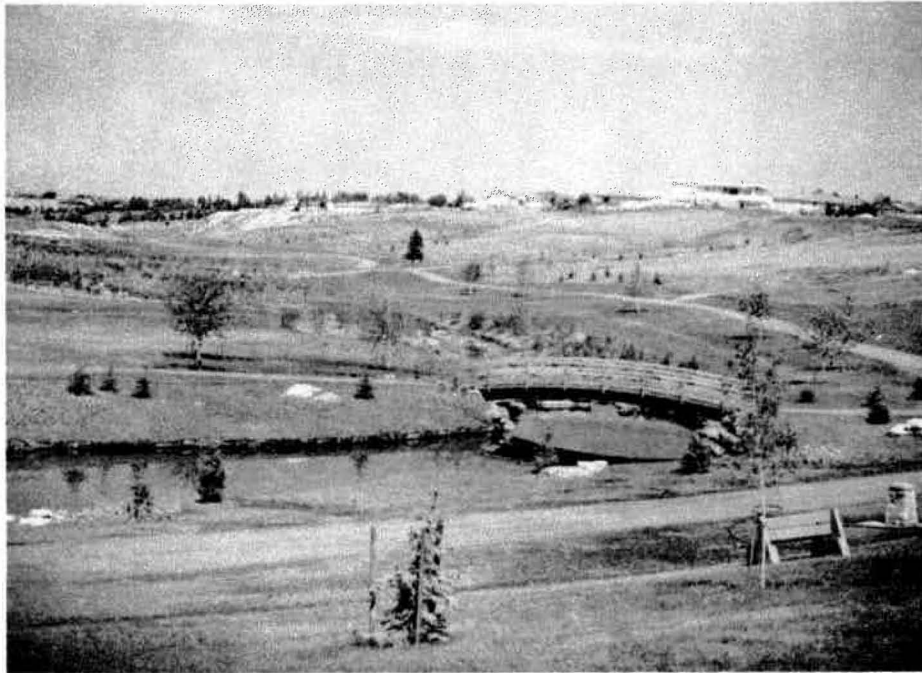
Dear Sirs:

In reporting the historical activities of the Parks and Recreation Department for the Year 1967, we naturally draw attention to those events concerned with the celebration of The Centennial of Canada.

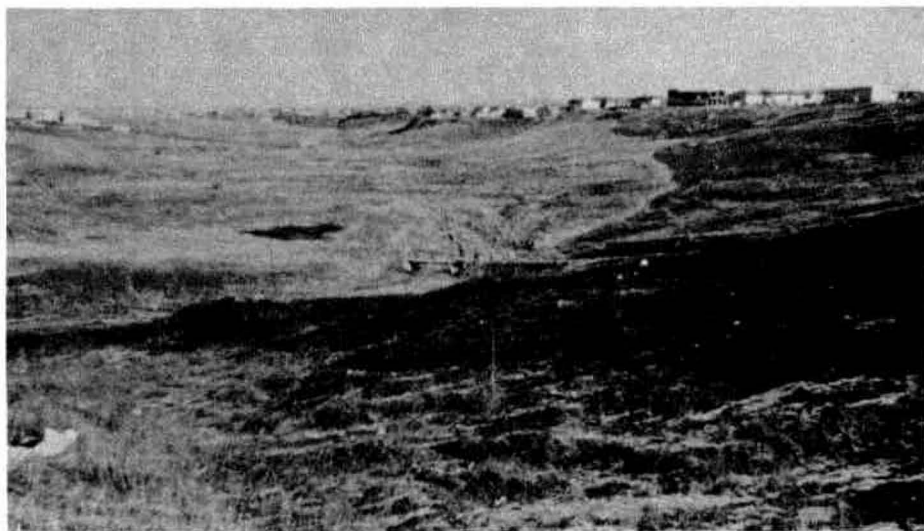
The Calgary Centennial Planetarium came through its final construction phases in 1967, with the opening date on July 1. This Centennial Project had been the responsibility of the City Centennial Committee, the administrative and management responsibility being placed in the Parks and Recreation Department. The City's Centennial Administration Office was also a part of this Department's organizational structure.



The Department had the responsibility for constructing the new Confederation Park and Golf Course, in co-operation with the Citizens Group known as the "Ravine Park Society" under the Chairmanship of Mr. Musgreave.



In addition, throughout the Year, the Recreation Division of the Department, in co-operation with many groups, sponsored centennial athletic tournaments, competitions and programs. Further information on these activities is presented in the detailed reports which follow.



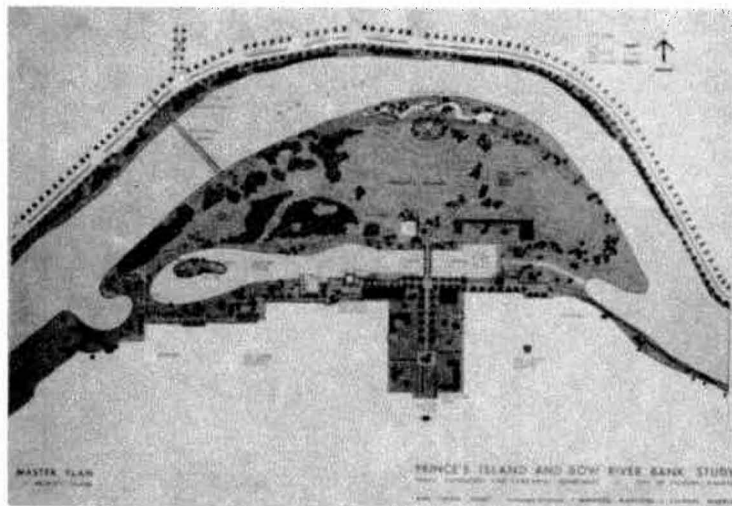
SOCIETIES: -

The Calgary Zoological Society and the Heritage Park Society, both had major park development projects. The Zoological Society added a new section to the Conservatory Aviary, including a restaurant area and doubled the size of the glass house. The Heritage Park Society added a number of new building exhibitions, principally, the "Wainwright Hotel" and the "Prince House." These facilities were visited by Her Royal Highness Princess Alexandra.



PLANNING:

The City of Calgary approved a Master Plan for the development of Prince's Island and the central Bow River area. This program involves an estimated \$2,000,000 expenditure over the next five-years for beautification of the river valley. A major Parks and Recreation Study was approved to evaluate the present and future needs for lands, facilities and services, and Dr. Louis Hammil was commissioned to carry out this one-year study.



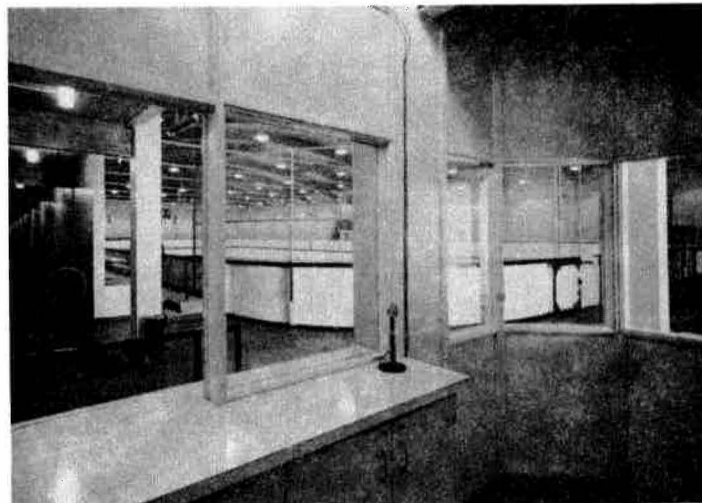
FACILITIES:-

The Year 1967 was no exception to the steady growth in the demand and provision of parks and recreation facilities. Major items included the new "Fred Shouldice Memorial Swimming Pool," and the opening of the "Renfrew Arena."



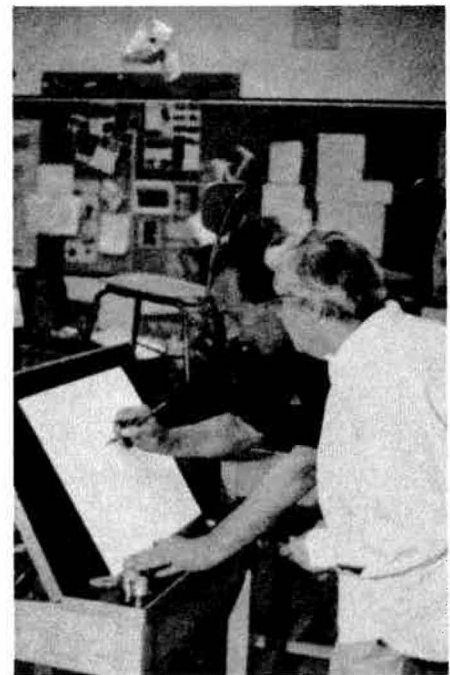
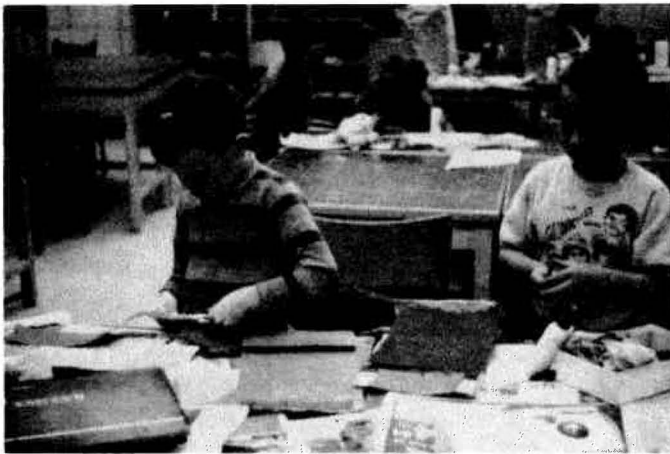
PARKS:-

During the year, approximately 122.5 acres of new parkland was developed for recreational and beautification purposes. In addition, in recent years, a most significant development has been the growth in areas requiring maintenance, which are associated with by-pass roads and highway projects; 77.7 acres in 1967.



PROGRAMS:-

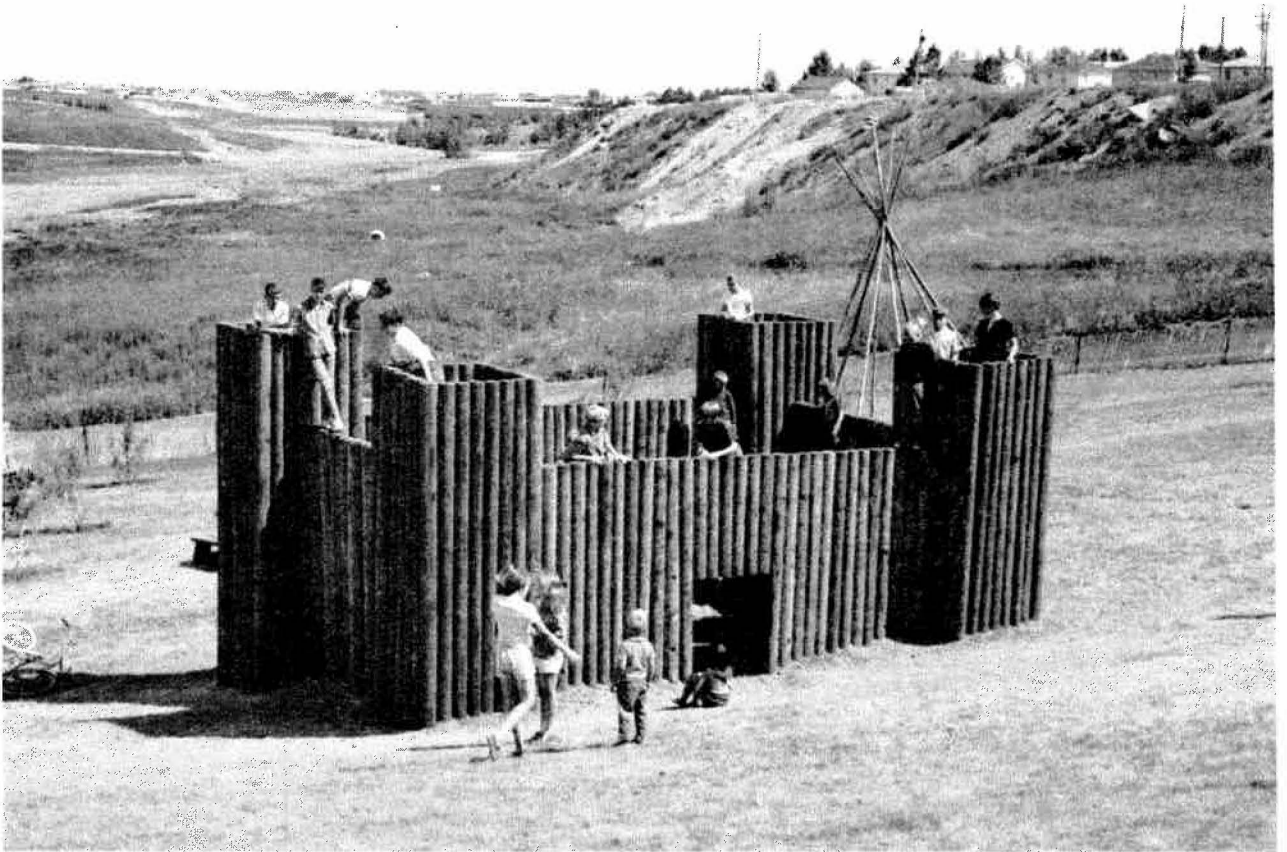
Two important operational developments occurred in 1967, effecting our recreational program services. The Department integrated the Adult Winter Recreation Programs with the Public School Board's Continuing Education Division Programs. This development eliminated potential over-lapping and duplication and made possible an economy in supervision, promotion and routine administration.





(Programs - continued)

The second development was the initiation and approval of a joint agreement between the City and both School Boards, whereby the organization would exchange facilities at no cost to each other in the southeast section of the City. The main facilities involved are the Board's gymnasiums and the City's swimming pools.



Respectfully submitted,

H. Boothman,  
Superintendent,  
Parks and Recreation  
Department.

## CENTENNIAL ACTIVITIES

By: E.G. Coombe,  
Executive Director.

The Year 1967 saw the climax of four years of planning for the celebration to mark the Centenary of Canadian Confederation. The full program of projects, events and activities carried out in the name of "Centennial" affected practically every citizen, and the success of the year-long program is ample proof that the Committees had planned well.

The nerve centre of the City's celebration was the Centennial Office, 527 - 8 Avenue S.W., where the Executive Director and his small staff were kept busy promoting and publicizing activities, encouraging participation and providing information and assistance to one and all.

During 1966 and 1967, a total of 14 different promotional brochures were designed. A total of 220,000 copies were printed and distributed, and 115,000 newspapers (a 12-page tabloid), which had been prepared by the office staff, were also distributed. Lists of projects were constantly being revised. The calendar of events was revised and printed four times. Posters were designed, printed and distributed to promote various events and, detailed programs for a dozen activities were prepared and produced.

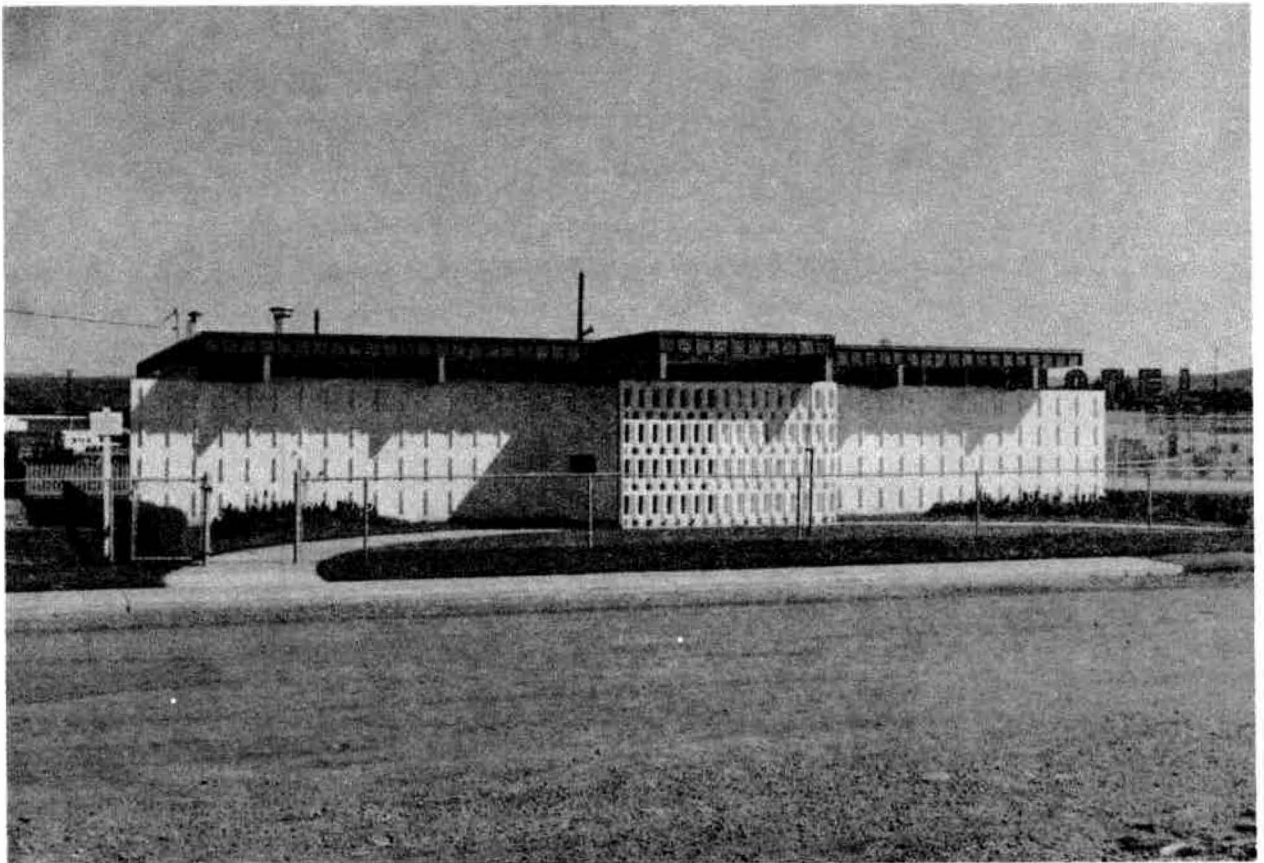
It is interesting to note that 60,000 Centennial pins, 30,000 packages of matches, 3,000 calendars and hundreds of miscellaneous items were distributed from this office, with a large percentage going to individuals who visited the premises. A time-consuming, yet most valuable service was the loaning of flags, banners, provincial emblems and other decoration material to community groups, schools, clubs, social groups, etc. Over 600 loans of these flags have been recorded. The mailing list for the monthly news bulletin "The Centennial" reached over 1,000 persons in 1967.

One of the interesting records kept by the Office has been the scrap books of clippings from the local newspapers concerning any and all features of Centennial. Twenty-seven such books have been completed, indicating the interest the papers have taken in Centennial matters.

The Centennial Office Staff was involved in the planning, organizing and arranging for many events such as: "The Arrival of the Confederation Train," "The R.C.M.P. Musical Ride," "The Programs for July 1st and 2nd," and, "The Centennial Ball," as well as many other events.

Placing of advertising (radio, TV and newspapers) for dozens of attractions, arranging for fireworks and other displays, street decorations, assisting in staging community events and liaising with Federal, Provincial and local committees, has kept the Centennial Staff fully occupied. Over 45 different releases were issued in 1967 to local news media representatives, describing Centennial projects and activities.

Yes, 1967 has been a busy year, but Calgary may be proud of the way in which her citizens co-operated and participated to make its celebration a most noteworthy remembrance of our 100th Birthday!



SENOIR CITIZENS LOUNGE  
BOWNESS

THE CALGARY CENTENNIAL PLANETARIUM

By: S. Wieser, Director.

OPENING:

On July 1st, 1967, His Worship Mayor J. Leslie opened the Centennial Project of the City of Calgary to the public. After the ceremonies, it was "Open House" at the Planetarium throughout July. Since then, this new, educational, recreation facility has enjoyed the support of the Citizens of Calgary beyond all expectations.

ATTENDANCE:

<u>MONTH</u>	<u>ADULTS</u>	<u>STUDENTS</u>	<u>CHILDREN</u>	<u>GUESTS</u>	<u>SCHOOLS</u>	<u>TOTAL</u>	<u>PERCENTAGE</u>
July	(Open House)					52,000	15.5%
August	5,510	1,481	2,354	505		9,850	2.9%
Sept.	3,326	596	863	152		4,937	1.5%
Oct.	2,288	837	900	1,200	5,123	10,348	3.1%
Nov.	1,787	1,019	501	1,204	7,947	12,458	3.8%
Dec.	1,363	912	641	1,337		4,253	1.2%
<b>TOTALS</b>	<b>14,274</b>	<b>4,845</b>	<b>5,259</b>	<b>4,398</b>	<b>13,070</b>	<b>41,846</b>	<b>12.5%</b>
<b>MONTHLY AVERAGE</b>	<b>2,855</b>	<b>969</b>	<b>1,052</b>	<b>879</b>	<b>2,614</b>	<b>8,369</b>	<b>2.5%</b>

Planetarium performance is generally evaluated by percentage attendance of metropolitan population.

U.S. Average	0.9%	(Maximum 1.7%)	Planetaria of comparable size, only.
Canadian Average	1.0%	(Maximum 1.1%)	Planetaria of comparable size, only.
Calgary's Average	2.5%	(Maximum 3.8%)	

### PROGRAMMES:

Celestial Theatre: July - This Land is Our Land;  
August - Our Spaceship Earth;  
September - The Wanderers;  
October - Space Belongs to Man;  
November - Star of Life, Our Sun;  
December - Let There Be Light, and  
The Man in The Moon.

Lecture Theatre: - "The National Film Board Presents"  
(July and August);  
- "Canadian Scientists"  
Distinguished Canadian  
Astronomers talked about  
their research;  
- "Horizons" - Adult Education  
Series consisting of  
"Physics" & "Chemistry"  
each with 6 lectures  
presented by Staff of the  
University of Calgary;  
- The Lecture Theatre was also rented  
to various groups frequent-  
ly for different functions.

### SCHOOL PROGRAMS:

The programs were compiled with the volunteer help of Calgary Teachers, and included Grades I to IX, inclusive. Grades V and VIII have visited the planetarium.

### OBSERVATORY:

The Observatory went back into operation on November 17th. A good attendance and high interest make this effort worthwhile.

### AMATEUR TELESCOPE MAKING:

Amateur Telescope Making Courses will start on January 1st, 1968. Arrangements were completed with the Calgary Centre of the Royal Astronomical Society of Canada to supply mirror kits. These kits are composed locally at a drastic saving over imported materials. The general interest shown by the public is high.

### EXHIBITS:

Eleven temporary exhibits are on display. These will be replaced in the near future with audience-participation displays.

## HERITAGE PARK

By: D. Turner,  
Manager.

Heritage Park activities were highlighted during Canada's Centennial Year with visits by Her Royal Highness Princess Alexandra and the Honorable Angus Ogilvy; the President of West Germany, Dr. Heinrich Luebke, and the Heritage Park Centennial Birthday Party.

Attendance and revenue continued to grow with thousands of Calgarians and out-of-town visitors coming to view the new additions to the Park. 1967 saw the "Peter A. Prince Mansion" from Calgary, the "Nanton Livery Stable", the "Shonts Grain Elevator," the "Wainwright Hotel," and the "Didsbury Bandstand" arrive in Heritage Park. These new exhibits were the Centennial Projects of Calgary - based corporations and service clubs.

Individual donations of historical artifacts numbered over 1,000 items. These being the contributions of the Citizens of Calgary and surrounding area and from such distant points as Port Hope, Ontario, and San Diego, California.

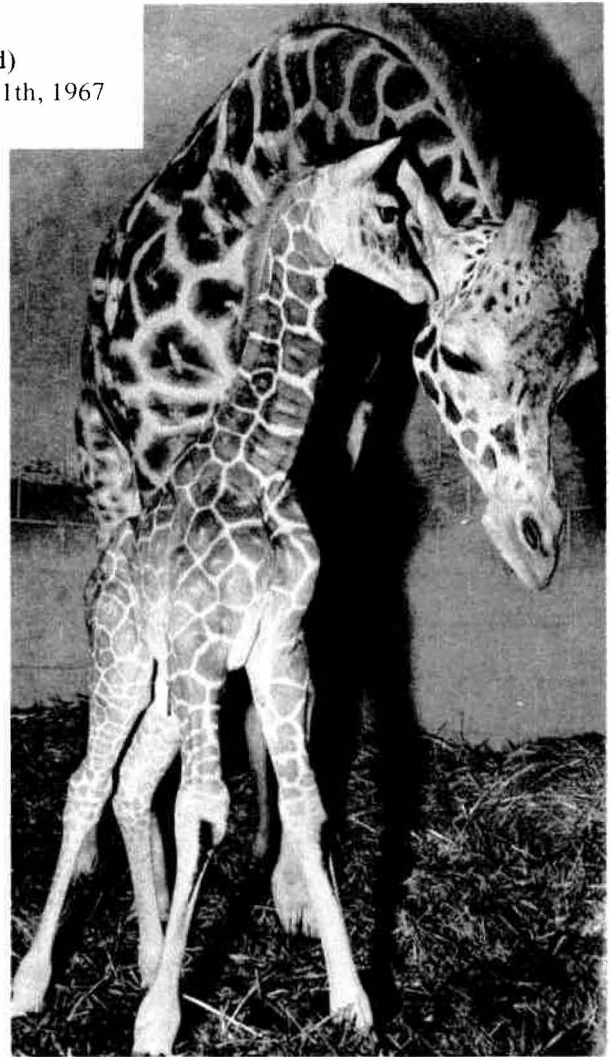
It is through corporate and individual interest, enthusiasm and goodwill that Heritage Park has been able to grow with Calgary and provide a continuing facility for the enjoyment of Calgarians and their friends.

Much credit is due to the City of Calgary, whose financial and administrative support has been a contributing factor to the Park's success.

Statistics pertinent to the 1967 year are as follows:

Attendance	- 274,405;
Gross Revenue	- \$145,000.00;
Operating Profit	- \$18,000.00;
Operating Staff	- 97;
Days of Operation	- 119.

- “Polly” - first Giraffe to be born in Canada
- parents; Katie and Charlie (4 years old)
  - born 12:30 am, Saturday, February 11th, 1967
  - gestation period of 14½ months
  - stood 5½ ft. at birth
  - weighed 95 lbs. at birth



- “Reindeer” - largest single acquisition of animals in 1967
- 14 animals from the Canadian Government Reindeer Herd in Inuvik, N.W.T.
  - flew down some reindeer moss for the animals
  - gradually introduced prairie wool in pellets.



## CALGARY ZOO

By: W. E. McKay,  
Director.

The Spring of 1967 saw the completion of the second floor addition of the zoo offices including a regulation classroom and directors boardroom. The new addition to the Tropical Aviary, including a tea room, was completed, it opened in May and has been the most popular building at the zoo during the winter months.

A new Commissary Building of brick construction was completed with new walk-in coolers, freezers and service area. The old Commissary has been converted into office space for the assistant director, staff lunchroom, shower facilities and locker area for the zookeepers.

The zookeeper apprentice program was started with evening classes at a local high school and a rotation of apprentice keepers to each section of the zoo.

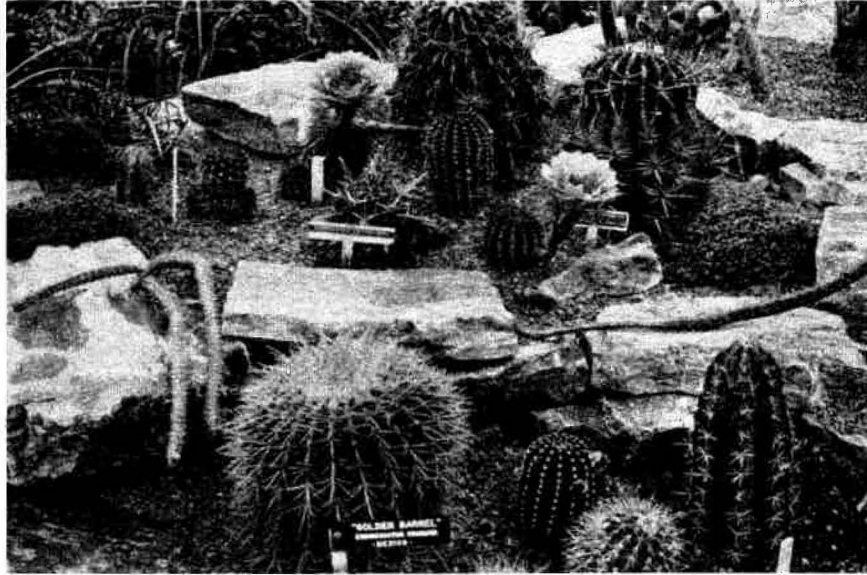
A zoo veterinarian was hired by the Society on a half-time basis during the latter part of this year.

The major addition to our animal collection was a herd of fourteen Reindeer, flown down from the Canadian Government herd at Inuvik, and the most important birth was "Pollie" the first Giraffe to be born in a Canadian Zoo.

Plans were laid in 1967 for an Aquatic Mammal Building to house Porpoise, to be built in 1968.

More visitors than ever before have visited the zoo this year and it is becoming more and more a popular winter attraction as we develop more buildings for all-year viewing.

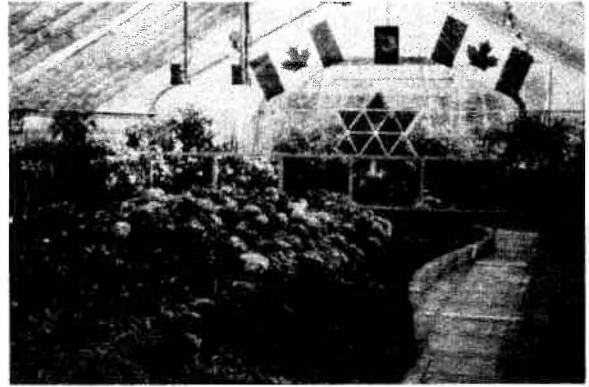




INTERESTING VARIETY OF CACTI



INSIDE NEW ADDITION TO AVIARY



CENTENNIAL DISPLAY AT AVIARY

TROPICAL AVIARY:

The Spring of 1967 saw the completion of the 11,000 square feet addition to the Tropical Aviary, which more than doubled the size of the existing unit.

This new addition features wide paths and a circular display bed situated in the centre, at a lower grade. The paths leading from this area rise in a slight up-grade to the ends and sides. A waterfall located in the northeast corner cascades down from a height of 14 feet to a pool at the base of the fall. The water then continues as a small stream along the west end and then flows east, finally ending in a large pool.

A tea-room is now located between the old and new conservatories and provides the public with a view of the plants and flowers while sitting in the tearoom. On the walls, hanging planters display Epiphyte plants, and add to the appearance of this area.

In the end of the east house a large centennial symbol made up of foliage and flowering plants which were changed periodically throughout the year, was a highlight which also included Canadian and Centennial Flags and all the Provincial Crests.

Other highlights of the displays were the spring bulb display of Crocus, Daffodils, Narcissus and Tulips; and

- The Easter Display of Lilies, Hydrangeas, Tulips and Cinerarias;
- The Chrysanthemum display of large decorative anemone, single, double and cascade Mums;
- The Christmas display was highlighted by red, pink and white Poinsettias, also displayed were Cyclamen, Christmas Cherries and Peppers;
- During December, there was a good show of Orchids in variety.

Inventory of the Tropical Aviary as of December 31, 1967, is:-

Bromelias	320,	
Cacti	700,	
Orchids	410,	
Tropical Plants	<u>5,600.</u>	
TOTAL	<u>7,030.</u>	Plants in the Tropical Aviary.

## GOLF COURSES

BY: J. O'Connor,  
Manager.

### SHAGANAPPI:

The first drive of the 1967 season was teed up on April 13th, and the last putt was dropped on October 31st. The golfers were frustrated with bad weather through April and spotty, cold weather through May, but were amply compensated with one of the finest summers on record.

Our 1966 program of tee building was carried forward and saw four new tees in 1967, to complete the outside 18 in this respect. A spring and fall tree-planting program added 100 poplar and 200 spruce trees, which improved the general course appearance.

The first tee area saw many improvements during the year; asphalted waiting area, new ticket book, P.A. system, ornamental wall. These new facilities were instrumental in a new starting system which met with the approval of all concerned.

An extension to the service building was started in the fall to add much needed storage area.

### LAKEVIEW:

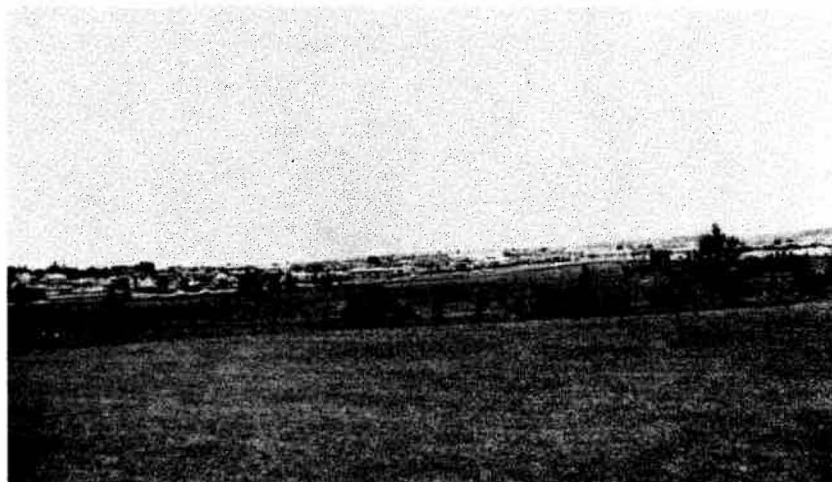
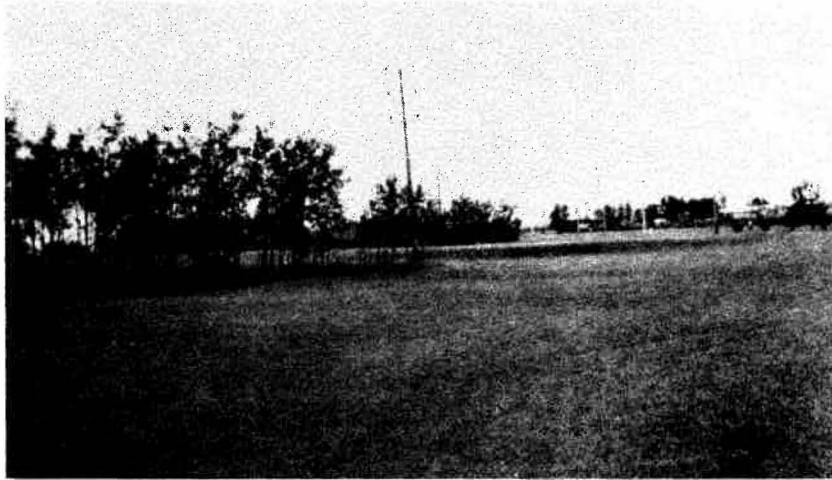
The opening date for the par 3 course was May 6th, and the closing date was October 23rd. This opening date was a full month later than last year, but good public patronage held the number of games to last years figures. Initial work was completed in extending the yardage of the course, which will ultimately provide three par-four holes.

### CONFEDERATION:

The turf condition at this course is very good, and unless there are unforeseen difficulties, it will provide excellent playing conditions for the opening, next season. The new clubhouse is nearing completion and will be ready to go first thing in the spring. 400 tree holes, in strategic locations, have been prepared for spring planting. Park Services have constructed a bridge across the creek and are proceeding with a weir at the foot of the lagoon.

MAPLE RIDGE:

The contracting firm constructing this course is obtaining fine results, and is on schedule. The rough earth moving has been completed and most of the re-loaming. The greens and tees have been roughed-in, and most of the water system has been laid. An architect has been commissioned to design the clubhouse and parking facilities and the course should be ready for play by the spring of 1969.



## RECREATION DIVISION

By: J.H. Worsfold,  
Director.

### COMMUNITY ORGANIZATION:

During 1967, the first steps were taken towards better liaison between the Parks and Recreation Department and the public, more specifically, community associations.

Eight Community Program Supervisors, in co-operation with four Recreation Area Supervisors, made preliminary contacts with the executives of various community associations. In an effort to obtain common opinion, various regional meetings were called to discuss problems facing the associations.

The forming of eight District Councils primarily working with community associations has been started and in two districts, are already in operation.

It is hoped that through these permanent councils, better understanding and communications will be achieved to fill the need for broader services in recreation in the City of Calgary.



FALL AND WINTER RECREATION CENTRE PROGRAM:

Our Centennial Year marked a dramatic change in winter centre operation. The season was divided into two ten-week sessions, Winter and Fall, and a variety of recreational activities were offered to adults, teens and children throughout the City.

Spring Programs sprang from 29 centres over the City, operating out of schools and recreation centres.

Each of the five districts that operated ended the season with a colorful display.

The major change occurred in the Fall Program. The City of Calgary Public School Board, in conjunction with the Recreation Division, started to offer Adult Recreation. One hundred and twenty-four courses were offered in 15 centres, these being mainly high schools. In this co-operative agreement, 2,748 people took advantage of the recreation opportunities and this number is expected to increase.

Meanwhile, the Recreation Division, now working out of 40 centres supervised by eight community program supervisors, took over the program for children and teens. A program for six-to-eight year olds was offered for the first time.

Significant increases in attendance was recorded and a variety of new downtown locations were tried. Knox United Church and the Chinese Church opened their doors to City Recreation for the first time and the response has warranted continuation in these centres. In addition, various youth programs were offered and operated in community association buildings.

Exclusive teen centres were also experimented with during the teen program and an increased program at Bowness Recreation Centre was credited to a full-time Centre Supervisor.

The total registration figures for the Winter Program for all age groups was 5,743, and the total registration figures for the Spring Program was 9,158. The attendance figures vary between 70% and 80% of the total registration figures.

SUPERVISED SUMMER PLAYGROUNDS:

During the summer of 1967, 40 supervised summer playgrounds were operated. Included in these were two joint-agency projects, one at Renfrew and the other at Victoria.

The age group covered in these programs were Grade 1 and over. Registration figures totalled 5,606 and the total attendance figure for the season, which ran from July 4th to August 24th, was 131,440.

With the employment of a more-specialized staff, a much broader program resulted which in return, reflected on attendance figures.

Playground staff were mainly recruited from universities with the majority being girls in their first or second year of education, physical education, or related fields. They attended a two-week training course in June, prior to the opening of playgrounds.

The 1967 seasonal playground theme was "Outer Space" which created and provided many interesting programs and special events and full advantage was taken of the Centennial Planetarium.

The program was divided into three main parts:  
Arts and Crafts,  
Physical Activities, and  
Special Events.

The last section included Parents' Night, Playground Stampede and various trips to the Zoo, Planetarium and Heritage Park.

As an added feature to the regular playground program special area wide events highlighted the summer season and these included:

- Cross Country Races,
- Novelty Swim Meets,
- Cheerleading Competitions,
- Arts and Crafts Displays,
- Talent Shows, and,
- The Annual Playday, which marked the conclusion of the playground season.

DAY CAMPS FOR CHILDREN:

Once again, there was a noticeable increase in the interest and participation in this program. All camps were filled to capacity some weeks prior to their commencement. Three camps were operated at each location, these being "Bowness Park" and "Edworthy Park," and a total of 432 children from grades 3 to 7 registered.

Many of the leaders had worked previously in City Day Camp Programs and all persons employed took a two-week, on-site training course.

Each camp period lasted nine days and included one sleep-out and a special event at which parents were invited to attend.

Some of the many camp activities programmed included:-

- |                |                |                  |
|----------------|----------------|------------------|
| - archery,     | - sing-songs,  | - fire building, |
| - games,       | - campcrafts,  | - survival       |
| - hiking,      | - nature lore, | training, and    |
| - discussions, | - tenting,     | - cookouts.      |

According to evaluations received from both campers and parents, this part of the Recreation Division's program must be rated as being highly successful.





## ATHLETICS AND FACILITY OPERATIONS

By: K. Bosma, Supervisor of  
Athletics & Facility Operations.

### FACILITIES:

Increased public demand for recreation facilities resulted in the construction of the following major projects:-

- Shouldice Swimming Pool, outdoor;
- Renfrew Indoor Artificial Ice Arena;
- Foothills Baseball Park;
- One additional field hockey field, Stanley Park;
- One additional wading pool, Confederation Park.

In addition, many minor projects were completed, which resulted in great improvements to the athletic and recreation facilities in the City. The greatest demand upon facilities lies in two areas; that of indoor artificial ice arenas, and indoor swimming pools, with the athletic fields also receiving heavy use.

The following major recreation facilities are available in Calgary:-

- Swimming Pools - outdoor - 9;
- Swimming Pools - indoor - 4;
- Stadia and Athletic Parks - 6;
- Artificial Hockey Rinks -  
uncovered - 1;
- Artificial Hockey Rinks -  
covered - 3;
- Speed Skating Oval - outdoor - 1;
- Fastball Park - 1;
- Baseball Park - 1;
- Rugger Fields - 3;
- Tennis Courts (4 courts at  
each location) - 3;
- Field Hockey Pitches - 2;
- Cricket Pitches - 2;
- Wading Pools - 12;
- Sailing School Facility - 1.

### CITY-OPERATED ICE RINKS:

The number of indoor artificial ice arenas increased to three, with the opening of Renfrew Arena in January. Even with this additional ice time, the demand for hockey, public skating and figure skating could not be met. Building will commence in the Spring of 1968 of a fourth indoor ice arena in the Kingsland area.

Foothills Arena continues to receive the heaviest use, being in operation for 52 weeks of 1967. In addition to serving the peak period of winter activities, this arena is the location of the Summer Figure Skating School which operates during July and August. In 1967, this program proved so popular that the School period was lengthened by 10 days and began operation in the latter part of June.

### ATHLETIC FIELDS:

Use of athletic fields increased considerably and may be attributed to the rapidly increasing popularity of soccer and football in the younger age groups, and of rugby and track and field generally. In addition, the field hockey pitches at Stanley Park, cricket pitches at Riley Park and the Renfrew Fastball Diamond received heavy use.

Foothills Athletic Park increased its recreation services with the addition of a baseball park, and the construction of a field house to service both the baseball park and the athletic fields.

### SWIMMING POOLS:

The City of Calgary now operates four indoor pools and nine outdoor pools. An additional indoor pool at Renfrew is scheduled to open in the Fall of 1968.

The most popular program in the pools is the swimming instruction program, and in 1967, a total of 13,146 individuals registered for lessons. This represents an increase of over 1,600 from 1966. In addition, the number of Royal Life Saving Society Awards passed, increased by 259 over 1966 to reach 545.

Three of the indoor pools have active competitive swim clubs, with representatives having competed in National and International events. Calgary Pools hosted several Alberta Swimming Championships, and inter-club competitions were numerous.

A diving program was introduced in most indoor pools and has been following the standards as established by the Canadian Diving Council, (Alberta Section).

The Recreation Division co-sponsored several aquatic clinics during 1967, which included diving, synchronized swimming and Red Cross Water Safety Instructors' Courses.

### TENNIS:

Growing interest in tennis resulted in a registration of 524 individuals for tennis instruction. This represents an increase of over 100 from 1966. The City has established three banks of courts with a total of 11 courts. Lessons were offered at all locations during June, July and August by a part-time professional instructor who was employed during this time.



COMPARATIVE STATEMENTS 1966 & 1967 ATTENDANCE & REVENUE

1966 ATTENDANCE & REVENUE RETURN:

Outdoor Pools Opened, May 22, 1966; Closed, September 6, 1966 -  
= 108 days Opened;

\*Indoor Pools.

<u>POOL</u>	<u>ATTENDANCE</u>	<u>REVENUE</u>
Mt. Pleasant	22,685	\$ 3,308.15
South Calgary	26,503	4,141.20
Bowview	25,722	3,668.10
Millican	16,256	2,635.55
Bridgeland	16,113	2,674.15
Forest Lawn	39,532	5,250.60
Stanley Park	46,721	7,657.65
Highwood	35,527	5,002.35
*Killarney	136,846	31,236.62
*Foothills	125,229	31,155.04
*Inglewood (Opened Aug. 1st)	13,972	3,602.20
*Acadia (Opened June 18th)	57,270	9,336.85
	<hr/>	<hr/>
TOTAL - 1966 -	562,376	\$109,668.46
	<hr/> <hr/>	<hr/> <hr/>

1967 ATTENDANCE & REVENUE RETURN

Outdoor Pools Opened, May 23, 1967; Closed, September 4, 1967 -  
= 105 days Opened;

\*Indoor Pools.

<u>POOL</u>	<u>ATTENDANCE</u>	<u>REVENUE</u>
Mt. Pleasant	23,372	\$ 5,382.50
South Calgary	30,402	7,242.00
Bowview	25,660	5,665.64
Millican	17,466	4,007.20
Bridgeland	24,602	6,296.60
*Acadia	94,345	27,675.75
Forest Lawn	41,729	8,374.15
Stanley Park	57,931	15,380.15
*Inglewood	46,643	15,439.85
Highwood	37,744	8,105.00
*Killarney	139,655	46,202.97
Killarney & Foothills Concessions		456.33
*Foothills	134,087	44,283.35
Shouldice (Opened Aug. 7th)	13,094	2,741.85
	<hr/>	<hr/>
TOTAL - 1967	686,730	\$196,797.01
	<hr/> <hr/>	<hr/> <hr/>

### ATHLETIC GROUP PROGRAM:

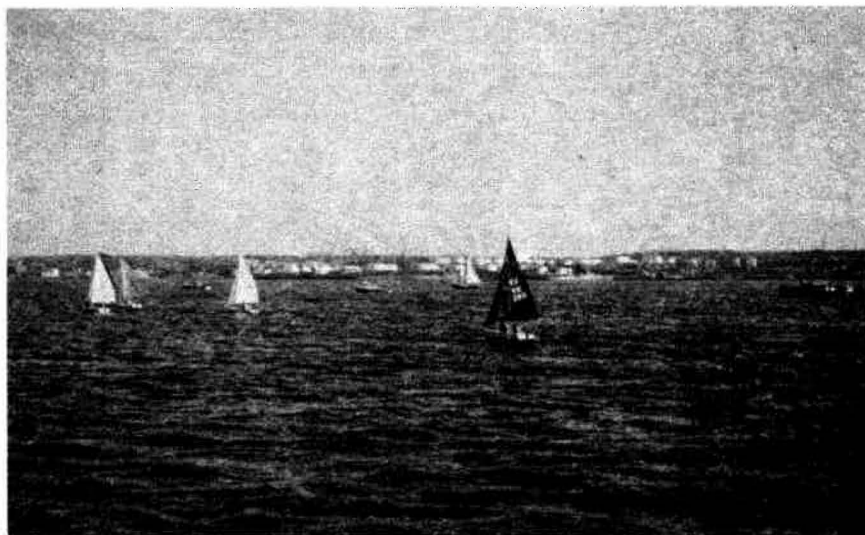
The Recreation Division was active in the promotion of amateur athletics in Calgary in 1967. Assistance was given to many athletic associations including, "track and field," "basketball," "volleyball," "field hockey," "soccer," "rugger," and others in the location of facilities in which they could conduct training activities, league games and tournaments during the winter months. Demand for opportunities to conduct activities on a year 'round basis is increasing greatly, and this program is helping to serve a need for the improvement of amateur athletic sports in Calgary.

### SPECIAL EVENTS:

Each year during Stampede Week, the Recreation Division conducts a track meet for Indian youngsters whose parents are camped on the Stampede Grounds. The "track meet" consists of novelty races, tug-of-wars, and events which allow mass participation. The turnout this year was good and the event was well received, both by the children who participated and by the adults who looked on.

The opening of Confederation Park provided a day of enjoyment for youngsters as the Recreation Division co-operated with the Ravine Park Society and Triwood and Rosemont Community Centres to help organize and run childrens activities.

Inglewood Swimming Pool was the location of several public displays of aquatic activities. Demonstrations included competitive and clown diving, synchronized swimming and competitive swimming.



GLENMORE LAKE PROGRAMS:

(A) SAILING;

Once again, sailing on Glenmore Lake proved to be a very popular form of Recreation, with the co-sponsorship of the Calgary Junior Sailing School and the City of Calgary, Parks and Recreation Department.

The Calgary Junior Sailing School is made up of eight executive members. Three of whom are appointed by the Calgary Yacht Club, three appointed by Glenmore Yacht Club and two members appointed by the Superintendent of Parks and Recreation.

The Adult and Junior Sailing Course this season involved some 398 participants during the Months of June, July and August.

The June sailing course for housewives was most successful, as were both the Adult and Children courses held during July and August.

Glenmore Yacht Club races got underway at 2:00 P.M. every Saturday and Sunday, and at 6:30 P.M. every Wednesday evening during the season.

Some of the special sailing events which took place were:-

- Sicks Trophy Regatta - June 10th and 11th;
- Lady Skipper Races - July 1st;
- Family Day (Sailing & Picnic) - July 16th;
- Alberta Provincial Regatta - August 4th, 5th & 6th;
- Pearce Trophy Regatta - September 9th and 10th;
- Frost Bite Regatta - October 7th and 8th.

(B) CALGARY ROWING AND CANOE CLUB;

The rowing and canoe clubs created a great deal of interest and, consequently, were very active this summer. Some of the highlights this season were:-

- Canoeing Centennial Sportsfest - May 20th;
- Rowing Centennial Sportsfest - May 20th, 21st & 22nd;
- Canoeing Provincial Boy Scouts Event - May 27th;
- Canoeing Anthony Henday Memorial Race - July 1st.

(C) THE PATROL BOAT;

The safety of the general public as well as participants of the sailing school, rowing and canoe clubs using Glenmore Lake was competently taken care of by the patrol boat crew, who were on duty from May 15th to October 24th, inclusive.

PARK OPERATIONS DIVISION

By: R. Dold, Supervisor.

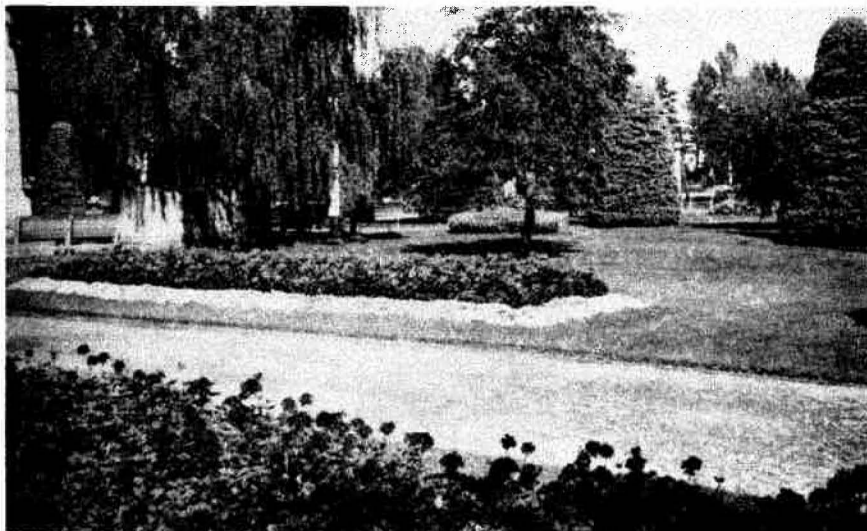
This has been another very busy and successful year. Tremendous progress was made in all work phases of the Operation Division.

Almost all Capital Projects have been completed, with a few to receive final treatment next year. The Confederation Park System, of course, was the highlight as far as landscaping projects were concerned.

The Parks Maintenance Program, the Street-Tree-Planting Program and Insect and Pest Control Program also have been carried out most efficiently. Special emphasis was placed on the improving of work methods during the entire year.

As of January 1, 1967, the Civic Greenhouse, Nursery and the Tropical Aviary Conservatory Sections have been incorporated into the Parks Operations Division. This Division now consists of the Construction Section, Parks Maintenance Section and the Horticultural Section, with a staff of 76 permanent and 386 seasonal employees.

May I at this time, express my sincere appreciation to all for their co-operation during the Year of 1967.



MEMORIAL PARK

## PARKS MAINTENANCE SECTION

Two hundred and fifty-five additional acres of parkland were maintained this year. The above acreage figure includes 72 acres of median strips, boulevards and cloverleaves, which were turned over for ground maintenance to us by the City of Calgary, Engineering Department. The combined acreage of parkland, where regular maintenance work is carried out, totals 1,953.04 acres.

Extensive fertilizing, top dressing, renovation and general parkland improvement programs, besides a high standard maintenance program, were carried out throughout the year in all types of parks. This process is becoming more and more important, if major and costly redevelopment projects are to be avoided. This is particularly true, when we look at some of the older parks and, of course, at all parks where the wear and tear is very great.

### PLANTING OF TREES:

A record planting of 13,088 trees and 7,887 shrubs was carried out in 1967, exceeding any planting of previous years. The most significant project was the planting of 938 trees, in co-operation with the Calgary Ravine Park Society, to commemorate the 100 Years of Confederation. Also, 2,059 shrubs and 582 trees were planted in a large shrub border east of 10th Street, along the south side of this park.

The balance of trees were planted at South Glenmore Park, in various decorative parks, playgrounds and, for the last time, on residential boulevards. City Council has agreed that tree-planting on boulevards forming residential frontage, will be discontinued and residents will be encouraged to plant trees inside their property lines at their own expense.

### TREE SPRAYING:

Insects were more evident throughout the City than ever before. Even large native Poplars have been severally affected by aphids this year, which made necessary the purchase of a John Bean Roto Mist tree sprayer. This new tree sprayer has a range of 60 to 70 feet and will make it possible to reach the tall trees as well. Diazinon has proven successful in destroying most insects.



MOSQUITO AND FLY SPRAYING:

With only light precipitation throughout the summer, mosquitoes and flies were kept very well under control. Sloughs and major parks received priority attention.

PRUNING:

Our systematic pruning methods which were implemented a few years ago are well established and have proven to be successful.

SNOW REMOVAL:

With additional equipment received in 1967, all sidewalks adjacent to parkland were cleaned and kept in good condition throughout the winter.

STATISTICS:

Tree and Shrub Planting in Parks:-

Trees - 5,246,  
Shrubs - 5,255.

Tree and Shrub Planting - Replacements on Boulevards:-

Trees - 4,653,  
Shrubs - 301.

Tree and Shrub, New Planting - Boulevards:-

Trees - 2,685,  
Shrubs - 7.

Tree and Shrub Planting - Other Departments:-

Trees - 504,  
Shrubs - 2,324.

Tree-Pruning - Parks and Boulevards:-

Trees - 4,401,  
Shrubs - 2,494.

Tree-Holes and Shrub Borders Prepared in Parks:-

Tree Holes  
(Fall, 1967) - 713,  
Shrub Borders  
(Fall, 1967) - 46,138 sq. ft.

Loam, Used in All Districts:-

12,450 cubic yards.

Grass Seed Used - Fine Mix:-

2,150 pounds.

Mosquito and Fly Spray:-

Oil - 2,250 gallons,  
Korlan - 19 gallons,  
Baytex - 170 gallons,  
Kerosene - 250 gallons.

Pest Control - Tree and Shrub Spraying:-

Malathion - 35 gallons,  
Diazinon - 99 gallons.

Fertilizers:-

Elephant  
(16-20-0 and  
14-14-7) - 57 tons,  
Presto - 3,600 pounds.

Picnic Tables:-

6 foot Light 110,  
6 foot Heavy 50.

CONSTRUCTION SECTION:

A total of 200.2 acres of parkland was developed during 1967. Other projects undertaken by this Section of the Department range from picnic tables, park benches, fire places, floating docks, traffic guards, etc., to the erection of all types of fences.

Weather conditions were more favourable for landscape construction than any other previous years. We did not lose any working days on the loam haul on job sites due to rain, or experience any major washouts after seeding operations.

However, drought conditions existed from mid-June to very late fall. This resulted in poor grass seed germination where irrigation is not readily available, and some re-seeding may be necessary in 1968.

DEVELOPMENT STATISTICS - 1967:

City Parks	25.45 acres;
Athletic Parks	21.5 " ;
District Parks	7.18 " ;
Community Parks and Playgrounds	43.32 " ;
Decorative Parks	8.2 " ;
Golf Course Construction Development	6.42 " ;
Boulevards (various widths)	67,000 sq. ft.
Planetarium (100,000 sq. ft. sodded)	3.07 acres;
Miscellaneous (McMahon Stadium)	3.28 " ;
Sub Division Developer Parks	9.29 " ;
Sub Division Developer Boulevards	4.6 miles
Engineer's Department, Land Development, Boulevards, Median Strips, etc.	65.21 acres.

HORTICULTURAL SECTION

During 1967, the Civic Greenhouses had a busy season. The flower beds and centennial displays throughout the City gave a very colourful display, and the warm dry summer season favored the growth of Petunias and Geraniums, which grew exceptionally well.

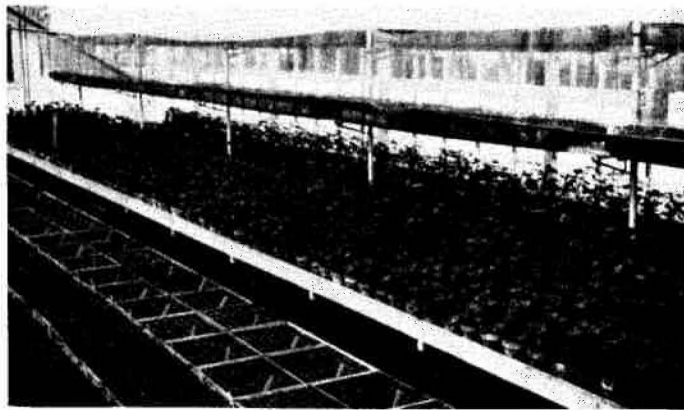
New additions to the Greenhouse area were the completion of two heated frames.

New areas requiring bedding plants included; Centennial Park, The Planetarium and flower beds adjacent to the Tropical Aviary Addition.

Following is a list of plant material used in Park Areas:-

Potted Geraniums	5,544,
Petunias	3,452,
3½" Potted Dahlias	2,551,
6" Potted Dahlias	370,
Potted Marguerites	342,
Potted Echeverias	437,
Dracaenas Potted	200,
Potted Vinca	93,
Potted Salvia	190,
Potted Cannas	105,
Flats - Annuals	3,268,
Plants - Perennials	34,130,
Hanging Baskets	60,
Boxes - Tulips	172.

(Sidewalk Planters between  
2 St. & 3 St. S.E. on 7 Ave.)



PART OF HUGE QUANTITY OF GREENHOUSE PRODUCTION

With the completion of the new addition to the Tropical Aviary, the Greenhouses supplied material for the initial planting. This material amounted to 2,652 plants.

During the year, the following plants were supplied for seasonal displays and replacements:-

Pots Cyclamen persicum	490,
Primula obconica	208,
Hydrangea macrophylla	153,
Begonias Assorted	1,762,
Chrysanthemums	860,
Senecio cruentus	615,
Euphorbia pulcherrima	168,
Hippeastrum	47,
Sinningia hybrida	51,
Browallia speciosa	71,
Fuchsia hybrida	309,
Pelargonium domesticum	355,
Schizanthus	279,
Lilium	125,
Freesia	46,
Tulips	277,
Hyacinths	301,
Kalancho	287,
Narcissus	55,
Azaleas	75,
Assorted Tropical Plants	8,201.

The City of Calgary was host to a number of visiting dignitaries during 1967, and the Civic Greenhouses were called upon to supply floral displays in conjunction with these visits.

Visiting dignitaries were:-

Prince Takamatsu and Party; Japan,  
 West German President Luebke,  
 Her Royal Highness Princess Alexandra,  
 Governor General Mitchener,  
 Lieutenant General Ankrah; Ghana.

Additional functions during the year which required flower and plant decorations were the Alberta Conference of Cities and Municipalities, Palliser Hotel; Samaritan Flower Show, Palliser Hotel; Centennial Ball, Calgary Inn; Calgary Horticultural Flower Show, Big Four Building, this decoration was highlighted by a large centennial symbol made up of flowers and placed above the stage; also, various Civic Dinner functions were supplied with flowers and plants during the year. The following locations were supplied with tropical plants:-

Planetarium	(New Planters),
Police Building	Renovating Planters,
General Hospital	Renovating Planters,
City Hall Annex	Renovating Planters.

CIVIC NURSERY:

The Spring of 1967 saw a lot of activity in shipping of trees and shrubs which were allocated to Boulevard Planting, various parks and new development projects.

Material supplied by the Civic Nursery:-

Trees & Shrubs	26,768,
Perennials	4,035,
Paeonias	281,
Square Feet of Sod	5,000

Forty-one large Poplar trees were removed from two lateral roads in the Nursery. These were large specimens and were planted in Confederation Park and Confederation Golf Course. The area from which these trees were removed and the lateral roads themselves will provide additional growing area for stock.

The area in the southeast section of the Nursery, which was used for providing sod, will be prepared for the planting of lining-out stock. During the summer, 5,000 yards of peat moss was spread over the area and plowed-in.

## WEED CONTROL SECTION

By: G. Van Reekum,  
Weed Control Officer.

During the period from April 17 to November 2, 1967, the Weed Control Division had up to a total of six crews in the various districts of the City. Each cutting crew consisted of five men, a truck, Gravely Mower, plus various hand tools such as scythes, rakes and hay forks.

We also used up to five Ferguson Tractors, equipped with six-foot cutting bars. This equipment was used mainly for mowing of grasses along rural road sides and on large undeveloped land areas.

During the peak cutting season, July and August, our cutting crews were very hard-pressed to keep up with requests from the public for weed control on both private and publicly-owned land.

### SPRAYING:

The Weed Control Division operated four spraying units with 200-gallon tanks, with three of these mounted on flat-deck trucks. These spraying units sprayed a 2,4-D Amine mixture on some 3,200 acres. These areas consisted of parkland, undeveloped sites, rural road sides and all highways. During the optimum spraying period, our 2,4-D sprayers were employed on a double shift system. The early morning spraying shift proved to be the most efficient due to low wind conditions.

Our fourth spraying unit was mainly used for the application of a sterilant type of weed killer. Sterilants will give complete vegetation control, lasting up to five years. Hyvar-X was applied on undeveloped boulevards along main thoroughfares, undeveloped City-owned vacant lots and bus loops.

### WEED INSPECTORS:

We employed three weed inspectors on a temporary basis during the May to September period. Two Weed Inspectors covered the total City area. Their main activities consisted of checking-out weed complaints received by our Department. At the same time, they were constantly on the look-out for weedy City areas. Our third Weed Inspector, searched titles at the Tax Office, mailed weed notices to offending parties, and prepared all work orders for the purpose of cleaning up of private properties by City Crews.

STATISTICS:

- Complaints re private property received and inspected	1,938,
- Weed Notices mailed out	1,264,
- Duplicate complaints	320,
- Unwarranted complaints	244,
- Complaints on City-owned land	110.

Spray units and crews performed work as follows, during the 1967 season:-

- Privately-owned properties cleaned-up	220,
- City areas cleaned-up by crews	650,
- Cemeteries hand-sprayed with 2,4-D (crews)	5,
- Developed parks sprayed with 2,4-D	406,
- Floral parks sprayed with 2,4-D	67,
- Undeveloped areas sprayed with 2,4-D	60,
- Both sides of road sides sprayed with 2,4-D (miles)	125
- Rough areas mowed by tractors	125
- Road sides mowed by tractors(miles)	125



## PARKS SERVICES DIVISION

By: S. Jonathan,  
Supervisor.

### REPAIR SHOPS:

The Year 1967, has in all ways been a record year for this Section of the Department, in that we have been called upon to maintain a greater volume of equipment than ever before. During the year there were 45 new pieces of equipment added to our equipment pool, with five tractors included. Machines owned by other Departments which we are required to maintain, included a combination backhoe, blade and trencher, a "Little Ford" highway oiler, a tree branch chipper, as well as many other smaller units.

The number of tires and batteries requiring attention, both in the Shop and in the field, has increased to such an extent that it almost requires a man fulltime on this work alone.

Almost 167,000 feet of garden hose is now in use throughout the system with approximately 1,000 sprinklers of various types being utilized.

The variety of work requiring to be done includes the preparing for use of various lengths of different sizes of hose pipe, servicing of sprinklers, sharpening of a variety of power mower reels, hand mowers, hand tools and the maintenance of equipment such as wheelbarrows, cemetery-lowering devices, pumps, sprayers, air compressors, chain saws, etc. The servicing and overhaul of a great variety of power-mower engines, tractor engines, boat engines, as well as the maintenance of a wide variety of attachments used in landscaping and grounds-maintenance work, provides a never-ending reservoir of things to be done.

Connected with the repair of equipment is the vital function of our Stores Section, which is responsible for the ordering, storing and issuing of all parts, supplies and tools, and the keeping of stock and inventory records for the control of these items.

A mobile maintenance service for equipment in the field is provided during the summer and, of course, it is necessary for our stores section to pick up parts and supplies of various kinds throughout the year.

Other services provided by this Section is the making of signs and plant labels, the repair of electrical equipment such as tape recorders, record players and P.A. Systems. The cutting of keys is also provided as well as the maintaining of a record for their distribution.

## PLUMBING AND WATER SERVICES:

Centennial Year saw most of the projects that were started two or three years ago, completed. We are thinking mostly of the Confederation Park Complex, containing extensive sprinkler systems, drinking fountains and a wading pool. Of unusual interest is the sprinkler system at the Confederation Golf Course, where the water is pumped from an artesian well, which is fed from the artificial lagoon, created by storing the water from a natural creek flowing through the Park. Also completed at this site, was the water service to the clubhouse, and a drainage system in the parking lot.

At the Lakeview Golf Course, several new lines were installed to increase coverage and repairs were made to the four-inch service and drain.

Shaganappi Golf Course was provided with an emergency water service from the City main for the purpose of testing lines in the spring and also for use if the pump which supplies water from the river should fail. This pump was also replaced and is a great improvement. Several lines were extended at the course and general repairs made where necessary.

Thirty three new parks were provided with complete sprinkler systems and extensions were made to systems at 14 older locations. Four new connections for flooding ice rinks were also installed.

Repairs were made to the water supply and drain at the Acadia wading pool and at Munro Park, the lines to the service building and wading pool were replaced as well as carrying out necessary work installing showers and drains in the athletic building.

A new sewer was installed in Riley Park, extending from a point some fifty feet from the wading pool out to 10 Street N.W. The line from the pool was then connected to this trunk. At the same time, year'round sewer and water lines were installed to the service building, cricket clubhouse, public washrooms and concession building. Gas fired unit heaters were installed in the public washrooms which will now permit longer use of this facility in the spring and fall periods.

At the Rotary Park Service Building, a forced-air furnace was installed to provide heat to all the rooms and, the plumbing fixtures were renewed with relocation of the sewer drain to permit improvement of the dressing room layout.

Plumbing and water supply was installed in the new service buildings at the Burnsland and St. Mary's Cemeteries and in the latter building, a forced-air furnace was installed to allow for winter use of plumbing facilities.

With the enclosing of the dressing rooms at the Millican Swimming Pool, we were able to install an improved heating system utilizing the existing heat exchanger to supply hot water for unit heaters in the dressing rooms and office. This system is equal to similar heating arrangements in most of the newer pools. Changes were made at other pools to provide improved water blending applications for the showers to ensure proper temperatures, and some of the boilers were overhauled to improve heating of the pool water.

Various repairs and adjustments to heating plants and water and plumbing installations were carried out at the Zoo, Conservatory, Campground, Heritage Park, Civic Nursery, Greenhouses, Bowness Park, Boat docks, Ice Arenas and Picnic Areas.

Water service lines were brought to the new building at the Foothills Athletic Park and to the camel pens on the north side of the river at the Zoo.

In addition to all the projects affecting this Department, including the usual turning on of summer services in the spring throughout the many parks, etc., and then shutting off, draining and winterizing services in the fall, we were called upon to carry out major and minor maintenance work on various installations for the Electric Light Department, Police Department, Health Department, City Hall Administration Building, Engineer's Depots, the Airport and other buildings. In all, a very busy year was experienced.

## CEMETERIES

By: M. Barraclough,  
Manager.

Throughout the cemeteries, most of the improvements planned for 1967 were completed and the results are definitely noticeable.

Paving of more roadways at Queen's Park was carried out and this gradual program will be continued next year, thus ensuring that eventually all dusty roadways will be eliminated. The unsightly scarred area created by the installation of the underground storm drain through the cemetery was tidied up and levelled out to a degree by the contractor and it was decided to leave it in this state until next year to see what settling will occur and to determine if there will be any chance of a boggy situation developing. Little rain fell during the year, however, so that settling will not be as complete as could be hoped for. If ground conditions are right the area will be further worked over and then dressed with topsoil and grass established next summer. Repairs to the road paving where it crosses the drain will be required in the spring.

The remainder of the flat marker section east of the entrance from 40 Avenue was grassed down and provides a more attractive appearance and will be easier to maintain than the sections where upright memorials are permitted. Filling of the gully to the south and west of the flat marker section is continuing rapidly and will provide usable burial ground in the near future.

Steps were taken during the summer to prohibit the placing of artificial floral decorations on graves during the growing season due to their becoming so numerous that the workmen were being greatly hampered in their maintenance efforts, not to mention the damage to mowing equipment caused by the presence of pieces of heavy wire and nails in the grass. This restriction will be a permanent rule in the future.

In the Union Cemetery a number of areas were grassed-down after removal of clumps of old and unattractive shrubery. Also, the area next to the road which was paved last year was brought level with the curb and new grass established, which created a greatly improved appearance to this section. During the summer, graves which had been opened for burials or because they had settled were returfed with sod rather than being loamed and seeded as was the practice in former years. The final results are far superior to the loaming and seeding process which usually resulted in a heavy crop of weeds due to the poor quality of loam.

New lockers were built in the men's quarters at the cemetery cottage and the accumulation of obsolete items in the vault under the chapel was cleaned out to make winter storage space for hose pipe, sprinklers and garden tools. Use of the chapel by the Funeral Homes was very limited during the winter and it is hoped that more advantage will be taken of this facility in the future as is done at Queen's Park. It is felt that there is justification in insisting on its use in cases where the necessary 48 hours notice has not been received from the Funeral Home prior to a burial. The practice of opening graves with the backhoe in established grave sections is a questionable procedure due to the many instances of substantial damage to the turf by this heavy machine. Opening by hand with assistance from the compressor unit is far more advisable and will be practiced in the new year in order to reduce the incidence of turf damage. This will apply to all cemeteries with established turfed sections.

In the Field of Honour, Burnsland Cemetery, in co-operation with the D.V.A., a start was made towards setting the upright headstones in a continuous ribbon of concrete. Two double rows of headstones were completed - one on each side of the cross of sacrifice, with the D.V.A. sharing half the cost. Double the amount of financial assistance has been promised for next year and this worthwhile improvement will be continued. Not only is the appearance of the cemetery improved but much can be saved in maintenance costs as there is no longer any grass to be trimmed between the headstones.

Two new concrete block service buildings were erected to provide much needed storage space for machines and equipment and also sanitary facilities for the men.

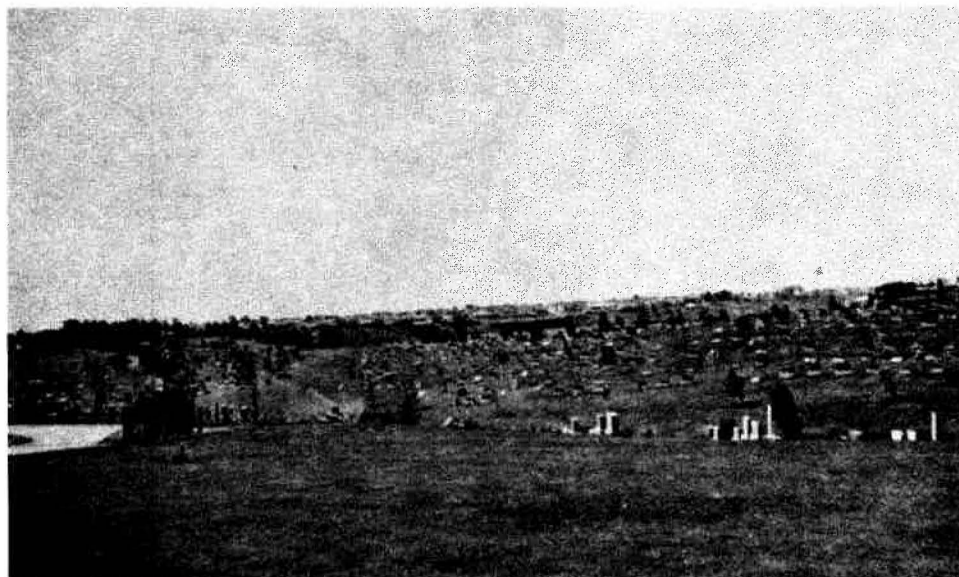
Burials were started late in the summer in the new extension to St. Mary's Cemetery and some fall tree planting was carried out in this area. A concentrated effort will be made in the spring to complete the road layout in this area, bring the sections up to grade and establish a cover of grass over most of the area. More tree planting will be done to improve the appearance of this burial ground and the blocks where burials have been made will be permanently loamed and seeded.

The wrought-iron fence at the Chinese Cemetery was painted during the year, as was the pagoda in this cemetery. All benches and tool storage shacks throughout the cemeteries were also painted.

It is planned to build a small office building at Queen's Park Cemetery and co-ordinate the operation of all cemeteries from this location. It is felt that much duplication of record-keeping can be eliminated, thus freeing cemetery caretakers for closer supervision of the actual work of maintaining and developing the cemeteries, which it is expected, will result in a substantial reduction of operating costs.

Burials during the year are as follows:-

Queen's Park	910
Union	112
Burnsland	268
St. Mary's	295
Chinese	<u>26</u>
TOTAL	<u>1,611</u>



STATEMENTS FOR EXPENDITURES AND REVENUES

ADMINISTRATION:

1967

Appropriation:                           \$86,160.00  
Expenditures:                              83,686.10

Salaries	\$72,238.79
Private Car Allowance	1,288.38
Subscriptions & Association Dues	277.64
Printing, Stationery & Office Supplies	7,230.44
Furniture & Fixtures	982.95
Staff Development & Training	<u>1,667.90</u>

TOTAL EXPENDITURES: \$83,686.10

ST. GEORGE'S ISLAND ZOO:

Appropriation                           \$390,030.00  
Expenditures                             423,299.46

Salaries	\$17,858.93
Wages	168,710.95
Private Car Allowance	480.00
Staff Development	506.24
Rental - Equipment & Services	824.39
Rental - City-owned Vehicles	3,033.48
Maintenance - Buildings & Property	6,269.11
Maintenance - Facilities	5,759.43
Utilities	41,607.69
Commissionaires & Policing	2,706.99
Feed Supplies	38,720.53
Sundry Materials	9,590.30
Horticultural & Agricultural Materials	27,231.42
Grant to Zoological Society	<u>100,000.00</u>

TOTAL EXPENDITURES \$423,299.46

DISTRICT MAINTENANCE:

1967

Appropriation: \$1,200,514.00  
Expenditures: 1,177,007.59

Salaries	\$ 62,668.12	
Wages	751,707.64	
Rental - Equipment & Services	109,818.51	
Rental - City Owned Vehicles	50,791.90	
Mtce.- Buildings & Property	33,457.93	
Mtce.- of Water Services	40,089.38	
Utilities	10,581.59	
Commissionaires & Policing	4,163.32	
Hydrant Water	19,999.92	
Materials	111,244.40	
Calgary & District Horticultural Society Grant	500.00	
Recoveries	<u>-18,015.12</u> CR	
TOTAL EXPENDITURES		\$1,177,007.59

STREET TREE PLANTING:

Appropriation: \$50,958.00  
Expenditures: 57,022.27

Wages	\$17,081.33	
Rental - Equipment & Services	1,428.13	
Rental - City Owned Vehicles	1,576.48	
Materials	32,114.99	
Contract Services	<u>4,821.34</u>	
TOTAL EXPENDITURES		\$57,022.27

WEED CONTROL:

Appropriation: \$122,648.00  
Expenditures: 122,105.92

Salaries	\$10,414.94	
Wages	84,254.95	
Rental - Equipment & Services	16,466.49	
Rental - City Owned Vehicles	13,980.70	
Materials	7,413.81	
Recoveries	<u>-10,424.97</u> CR	
TOTAL EXPENDITURES		\$122,105.92



ST. PATRICK'S ISLAND CAMPGROUND:

1967

Appropriation: \$8,849.00  
Expenditures 6,312.89  
Revenues: 12,066.83CR.

Wages	\$ 62.30
Rental - Equipment & Services	50.00
Rental - City Owned Vehicles	22.48
Mtce. - Buildings & Property	1,718.32
Maintenance - Facilities	1,980.43
Utilities	2,079.75
Materials	<u>399.61</u>

TOTAL EXPENDITURES

\$6,312.89

CAMPGROUND REVENUE:

Registrations - 24.1%	\$6,066.83
Basic Rental	<u>6,000.00</u>

TOTAL CAMPGROUND REVENUE

\$12,066.83CR.

HERITAGE PARK:

Appropriation: \$60,438.00  
Expenditures: 61,188.05

Salaries	\$20,638.25
Wages	19,549.33
Private Car Allowances	481.98
Rental - Equipment & Services	1,230.60
Rental - City Owned Vehicles	1,695.94
Building Maintenance	806.21
Utilities	1,969.59
Insurance	7,678.60
Materials	<u>7,137.55</u>

TOTAL EXPENDITURES

\$61,188.05

SWIMMING POOLS:

1967

Appropriation: \$527,154.00  
Expenditures: 529,540.79

Salaries	\$10,031.60
Wages	360,661.01
Private Car Allowance	1,303.84
Rental - City Owned Vehicles	895.88
Mtce. - Buildings & Equipment	60,007.80
Utilities	68,209.94
Laundry Service, Clothing and Incidentals	3,110.50
Chemicals	13,780.64
Materials	11,539.58

TOTAL EXPENDITURES

\$529,540.79

ARENA & ATHLETIC PARKS:

Appropriation: \$206,706.00  
Expenditures: 220,280.44

Salaries	5,143.97
Wages	139,181.46
Rental - Equipment & Services	11,866.04
Rental - City Owned Vehicles	472.63
Mtce. - Buildings & Facilities	16,938.72
Utilities	35,400.42
Summer Skating Director Fees	1,000.00
Materials	10,277.20

TOTAL EXPENDITURES

\$220,280.44

ATHLETIC SERVICES:

Appropriation: \$45,995.00  
Expenditures: 42,152.23

Salaries	\$13,282.68
Wages	16,896.57
Private Car Allowances	1,794.90
Equipment Maintenance	1,540.03
Rental - Building & Property	784.60
Materials	2,273.45
Utilities	690.00
Contractual Services	4,140.00
Grants to Calgary Community Service Association	750.00

TOTAL EXPENDITURES

\$42,152.23

SPORTS FIELDS, PLAYGROUNDS & RINKS:

1967

Appropriation: \$251,227.00  
Expenditures: 237,368.23

Salaries	\$ 4,516.00
Wages	122,650.89
Private Car Allowances	848.63
Rental - Equipment & Services	5,864.70
Rental - City Owned Vehicles	19,131.53
Mtce. - Buildings & Facilities	26,492.74
Utilities	8,744.53
Hydrant Water	3,999.96
Community Floodlighting	36,610.73
Materials	8,508.52

TOTAL EXPENDITURES

\$237,368.23

COMMUNITY PROGRAMS:

Appropriation: \$283,077.00  
Expenditures: 266,418.20

Salaries	\$88,602.23
Wages	91,200.20
Private Car Allowances	8,651.86
Equipment Maintenance	2,999.23
Rental - City Owned Vehicles	1,040.64
Building & Property Mtce.	3,371.99
Utilities	2,713.97
Rental - Buildings & Property	20,701.55
Adult Recreation Instructors Remuneration	9,111.99
Materials	14,678.57
Advertising	1,877.21
Contract Service - Recreation Study	10,000.00
Hunter Trials Expenses	890.32
Cont. Community Grants Reserve	25,000.00
Grants from Provincial Government	-14,421.56CR

TOTAL EXPENDITURES

\$266,418.20

GOLF COURSES:

1967

Appropriation: \$96,893.00  
 Expenditures: 106,899.15  
 Revenues: 91,845.07CR

Salaries	\$ 4,901.17
Wages	58,158.42
Travel Expense	170.50
Rental - Equipment & Services	10,991.10
Rental - City Owned Vehicles	3,603.14
Maintenance - Buildings and Property	2,635.65
Maintenance - Water Services	6,852.68
Utilities	3,568.58
Management Remuneration	5,000.04
Materials	9,848.06
Purchases - Confections & Golf Supplies	<u>1,169.81</u>

TOTAL EXPENDITURES

\$106,899.15

GOLF COURSE REVENUE - SHAGANAPPI - (Opened April 13, Closed October 31)

GREEN FEES

1,472 Jr. @ 1.00	\$ 1,472.00	- 9-hole, Weekdays	
882 Jr. @ 1.25	1,102.50	-18-hole, "	
86 Jr. @ 2.00	172.00	-18-hole, Weekends & Holidays,	
24,540 Sr. @ 1.25	30,675.00	- 9-hole, Weekdays	
5,930 Sr. @ 1.75	10,377.50	-18-hole, "	
9,440 Sr. @ 2.50	23,600.00	-18-hole, Weekends & Holidays.	
			\$67,399.00

Calgary Junior Golf Championship

\$ 68.25

SEASON TICKETS

Husband & Wife	\$ 2,400.00	
Ladies & Senior Citizens (R)	1,720.00	
Junior (R)	2,740.00	
Gentlemen and Ladies	<u>2,475.00</u>	\$ 9,335.00

GREEN FEES- LAKEVIEW PAR 3 (Opened May 6, Closed October 23)

5,032 Jr. @ \$ .50	\$ 2,516.00	
13,171 Sr. @ \$ .75	9,878.25	
Rental of Clubs	558.40	
Drink Dispenser	785.00	
Misc. Sales (balls, tees, confections)	<u>1,305.17</u>	\$15,042.82

\$91,845.07CR

PLANETARIUM:

1967

Appropriation: \$110,204.00  
Expenditures: 143,960.66

Salaries	\$69,539.47
Wages	10,619.86
Private Car Allowances	442.98
Staff Development	671.61
Rental Equipment & Services	190.07
Rental - City Owned Vehicles	180.84
Building and Property	
Maintenance	9,267.86
Utilities	16,612.79
Supplies	9,120.60
Laundry Service	35.25
Lecture Fees, Commissionaires, etc.	6,091.10
Advertising	6,402.25
Janitorial Service	14,785.98

TOTAL EXPENDITURES

\$143,960.66

CENTENNIAL COMMITTEE:

Appropriation: \$135,307.00  
Expenditures: 123,395.81

Salaries	\$16,151.75
Travel Expense	729.36
Building Rental	4,455.00
Telephones, Telegrams	452.65
Postage, Printing and Office	
Supplies	609.80
Sundry Services	47.38
Contribution for '68	1,840.00
Promotion	99,109.87

TOTAL EXPENDITURES

\$123,395.81

CEMETERIES:

1967

Appropriation: \$218,673.00  
Expenditures: 169,826.52

Salaries	\$20,214.17	
Wages	157,159.55	
Private Car Allowances	977.57	
Rental - Equipment & Services	26,610.21	
Rental - City Owned Vehicles	6,332.67	
Maintenance - Buildings and Property	4,244.81	
Maintenance - Water Services	4,471.05	
Utilities	1,313.32	
Hydrant Water	6,000.00	
New Equipment	642.60	
Materials	6,970.61	
Interest from Perpetual Care of Graves Fund	-65,110.04CR	
	<hr/>	
TOTAL EXPENDITURES		\$169,826.52

Perpetual Care Receipts \$77,926.00

PARKS CONSTRUCTION:

Appropriation: \$386,687.00  
Expenditures: 383,952.31

Salaries	\$48,621.39	
Wages	14,559.68	
Telephones	226.22	
Equipment Maintenance	945.84	
Vehicle Rentals	10,197.57	
Building Maintenance	1,869.46	
Sundry Materials	6,756.18	
Contribution to Capital Charges Recovered from Other Budgets	367,888.03	
	-67,112.06CR	
	<hr/>	
TOTAL EXPENDITURES		\$383,952.31

SUPPORTING UNITS1967REPAIR SHOP

Salaries	\$31,604.88	
Wages	115,869.27	
Equipment Mtce. & Rental	796.63	
Rental - City Owned Vehicles	11,791.75	
Shop Renovation	2,682.30	
Rental - Building & Property	1,269.04	
Materials	71,857.57	
Tools	2,221.51	
Physical Inventory Adjustment	11,867.99CR	
Charges Recoverable	230,974.15CR	
	<u>\$ 4,749.19CR</u>	Surplus

PLUMBING SHOP

Salaries	\$22,624.98	
Wages	109,324.23	
Rental - Equipment & Services	15,835.52	
Rental - City Owned Vehicles	13,656.42	
Rental - Buildings & Property	868.94	
Sundry Materials	78,921.23	
Physical Inventory Adjustment	6,300.96	
Charges Recoverable	234,945.08CR	
	<u>\$ 12,587.20</u>	Deficit

NURSERY

Salaries	\$4,483.37	
Wages	28,104.08	
Rental - Equipment & Services	2,517.10	
Rental - City Owned Vehicles	2,133.87	
Mtce. - Buildings & Property	454.75	
Utilities	1,462.78	
Materials	30,742.43	
Physical Inventory Adjustment	14,538.85	
Stock Issues	72,863.75CR	
	<u>\$ 11,573.48</u>	Deficit

GREENHOUSE

Salaries	\$5,583.34	
Wages	33,801.75	
Rental - Equipment & City Vehicles	1,202.68	
Mtce. - Buildings & Property	2,115.10	
Utilities	2,631.08	
Materials	4,991.41	
Stock Issues	52,523.89CR	
	<u>\$ 2,198.53CR</u>	Surplus

SUMMARY OF APPROPRIATION AND EXPENDITURES

TOTAL OF APPROPRIATIONS: \$4,181,520.00

1967

EXPENDITURES

Administration	\$ 83,686.10	
St. George's Island Zoo	423,299.46	
District Maintenance	1,177,007.59	
Street Tree Planting	57,022.27	
Weed Control	122,105.92	
St. Patrick's Island Campground	6,312.89	
Heritage Park	61,188.05	
Swimming Pools	529,540.79	
Arena & Athletic Parks	220,280.44	
Athletic Services	42,152.23	
Sports Fields, Playgrounds and Rinks	237,368.23	
Community Programs	266,418.20	
Golf Courses	106,899.15	
Planetarium	143,960.66	
Centennial Committee	123,395.81	
Cemeteries	169,826.52	
Parks Construction	383,952.31	
Repair Shops	4,749.19	Surplus
Plumbing Shop	12,587.20	Deficit
Nursery	11,573.48	Deficit
Greenhouse	2,198.53	Surplus
Equipment Pool - Undistributed Costs	24,053.89	
	<u>\$4,195,683.47</u>	

STATEMENT OF REVENUE

Bowness Park	\$ 7,200.00	CR
Campgrounds	12,066.83	CR
Swimming Pools	196,797.01	CR
Arenas & Athletic Parks	63,926.41	CR
Sport Fields & Rinks	8,398.18	CR
Sundry Registrations	16,455.00	CR
Cemeteries Fees	67,758.90	CR
Golf Courses	91,845.07	CR
Planetarium	18,810.41	CR
	<u>\$ 483,257.81</u>	CR