

Labour Market Review

Patrick Walters, City Economist | Estella Scruggs, Corporate Research Analyst

October 11, 2013

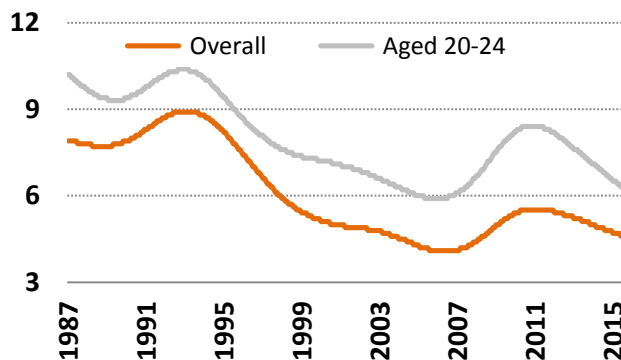
CER unemployment rate was 4.8 per cent

The September 2013 Labour Force Survey from Statistics Canada for the Calgary Economic Region showed the following:

- Total employment was estimated at 847,100, up from 842,300 in the previous month and up 37,400 year-over-year. Full-time employment grew by 20,200 and part-time employment increased by 17,200 over the last twelve months.
- The labour force was estimated at 889,900, up from 852,500 for the same period 2012. Consequently, the number of unemployed persons was estimated at 42,800, down from 43,100 in September 2012. The working age population was estimated at 1,186,000, an increase of 44,900 from September 2012. The labour force participation rate fluctuated around 75 per cent over the past 12 months.
- The unemployment rate was placed at 4.8 per cent, down from 5.1 per cent a year earlier. The overall unemployment rate masks the variation in the unemployment rates among age groups. For example, data for the 1988 – 2013 period shows the 20 – 24 age cohort has consistently had an above average unemployment rate.
- Calgary's average weekly wage rate was \$1,095, up from \$1,079 in September 2012. The wage inflation rate was estimated at 1.5 per cent, a drop from 6.4 per cent in September 2012.

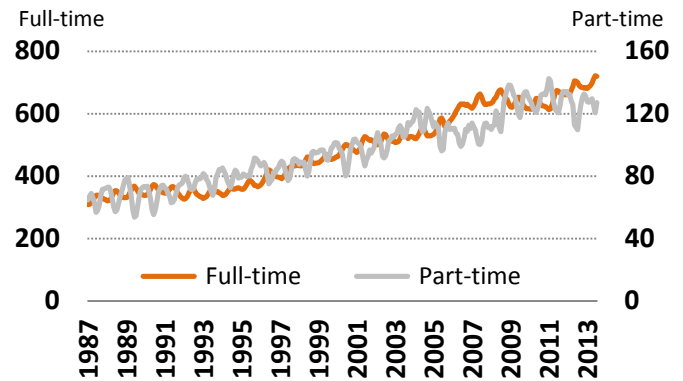
Next update: November 8, 2013

Chart 1. CER Unemployment rate trends
(1987-2015, per cent)



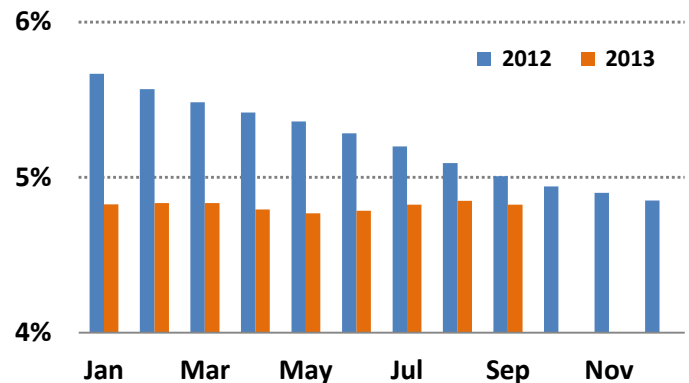
Source: Statistics Canada, Corporate Economics, October 2013

Chart 2. CER full- and part-time employment
(Mar 1987 - Sep 2013, thousands of persons)



Source: Statistics Canada, Corporate Economics, October 2013

Chart 3. CER Unemployment rate
(Seasonally adjusted, 12-month-moving-average, %)



Source: Statistics Canada, Corporate Economics, October 2013

Calgary Economic Region Labour Force Statistics
(Seasonally unadjusted 3-month-moving-average)

Description	Sep-13	Aug-13	Sep-12	Annual Change
Working Age Population ('000)	1,186.6	1,182.2	1,141.7	44.9
Labour Force ('000)	889.9	887.6	852.5	37.4
Labour Force Participation Rate (%)	75.0	75.1	74.7	0.3
Employment ('000)	847.1	842.3	809.4	37.7
Employment Rate (%)	71.4	71.2	70.9	0.5
Unemployment ('000)	42.8	45.4	43.1	(0.3)
Unemployment Rate (%)	4.8	5.1	5.1	(0.3)

Source: Statistics Canada, October 2013

Labour Market Review

Patrick Walters, City Economist | Estella Scruggs, Corporate Research Analyst

October 11, 2013

Who We Are

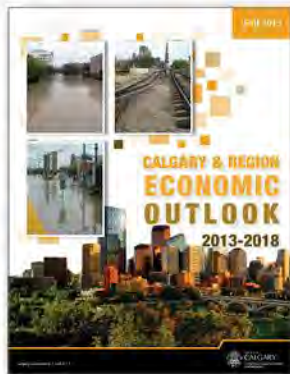
Corporate Economics provides services in four areas: forecasting, information provision, policy analysis and consulting. We also monitor the current economic trends which allows us to develop unique insights on how external events are impacting the local economy and the Municipal government. We are experienced at researching different economic topics and developed reliable methods of forecasting and analysis.

For more information, please contact:

Patrick Walters
403.268.1335 or patrick.walters@calgary.ca

Many of our publications are available on the internet at www.calgary.ca/economy.

Forecasting



- ▶ Calgary & Region Economic Outlook
- ▶ Energy Reports on Natural Gas and Crude Oil

Information Provision



- ▶ Labour Market Review
- ▶ Inflation Review
- ▶ Current Economic Analysis
- ▶ Construction Inflation

Policy Analysis



- ▶ A Case of Fiscal Imbalance: The Calgary Experience
- ▶ Diesel Fuel Price Pass-Through in Calgary
- ▶ Calgary Residential and Commercial Real Estate Markets

Corporate Research Analyst: Estella Scruggs

The City of Calgary provides this information in good faith. However, the aforementioned organization makes no representation, warranty or condition, statutory express or implied, takes no responsibility for any errors and omissions which may contained herein and accepts no liability for any loss arising from any use or reliance on this report.

Source: Statistics Canada and Corporate Economics

