

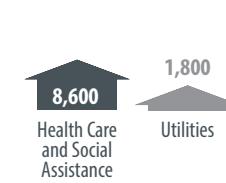
Monthly Highlights*:

Total Employment

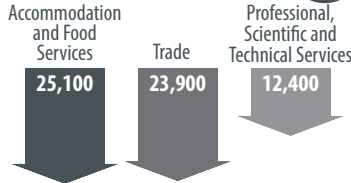
Calgary Economic Region



Most Job Gains by Industry from July 2019



Most Job Losses by Industry from July 2019



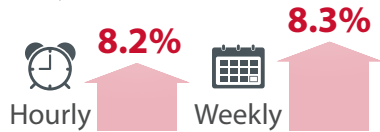
Unemployment Rates Comparison

Calgary Economic Region



Average Wage Rate

Calgary Census Metropolitan Area from July 2019



Canada Emergency Response Benefit (CERB)**



Total employment in the Calgary Economic Region (CER) registered a modest increase in July 2020. Employment has increased by 33,600 persons from a month ago but is down 99,300 persons from a year ago. The total unemployed in the CER was 146,500, up from 141,700 a month ago, and up from 65,300 a year ago. The three-month-moving-average unemployment rate fell to 14.9 per cent in the CER, compared to 14.5 per cent in Alberta and 12.3 per cent in Canada.

Labour Force Survey (LFS) estimates for July 2020 are for the week of July 12-18. Since June 12, Alberta has been in Stage 2 of the COVID-19 relaunch strategy, permitting additional capacity at many businesses, although large gatherings and the operation of certain businesses (such as nightclubs) remains prohibited. Restrictions will not be fully lifted until Stage 3 at a future date to be determined based on health indicators, meaning that constraints will remain on the labour market until then. Over the last month Accommodation and food services gained 5,200 jobs (its first month-over-month employment increase since October 2019), Finance and Insurance gained 3,500 jobs, while Educational Services lost 4,000 jobs.

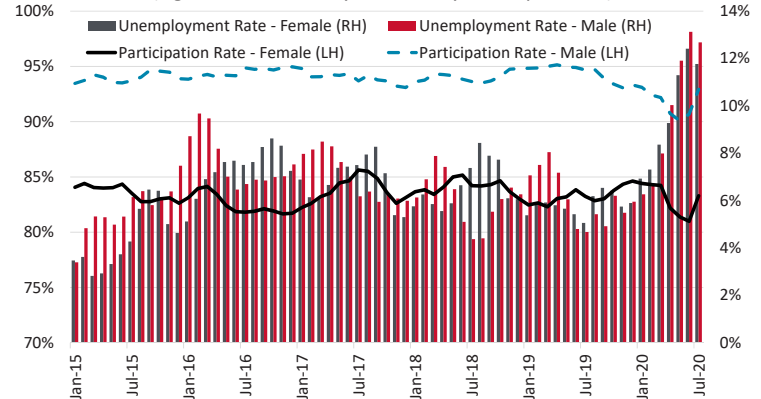
In July 2020, the average employee wage rate in the Calgary Census Metropolitan Area (CMA) was \$1,301 per week. From June 2020 to July 2020, the total wage bill for all employees in the Calgary CMA increased by \$26.6 million, following last month's increase of \$11.7 million. The total wage bill for all employees in the Calgary CMA has fallen by 3 per cent over the past year, larger the result of lower total year-over-year employment.

Chart 1 examines labour market conditions in the CER for women and men aged 25 to 54. The labour force participation rate (defined

as persons either working or looking for work) has increased by 2.9 per cent over the past year for women, and 6.6 per cent over the same timeframe for men. Chart 2 takes a closer look at the CER employment picture by industry and how employment levels have changed month-over-month (indicating how industries are emerging from the COVID-19 lockdown), and year-over-year (representing how employment by industry have been affected by the COVID-19 shock).

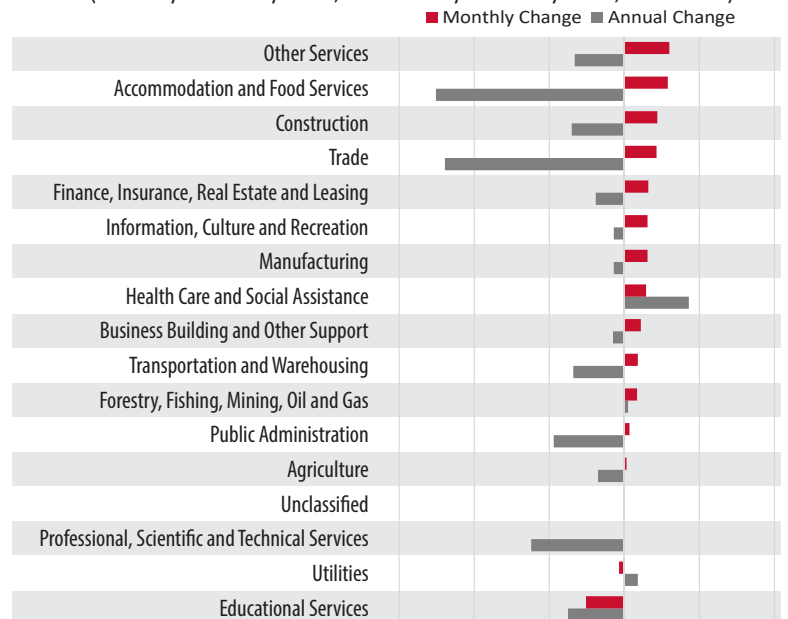
Financial aid from the federal government, including the Canada Emergency Response Benefit (CERB) and the Canada Emergency Wage Subsidy (CEWS), have been made available since the start of the COVID-19 pandemic and subsequent labour market slowdown. On July 17, the federal government announced that it was broadening the reach of the CEWS to further encourage employers to re-hire previously laid off workers. On July 31, the federal government announced that CERB recipients would be transitioned into a revised Employment Insurance (EI) program in the fall to cover those who may not qualify for existing EI, and that further details will be released in August.

Chart 1. Female/Male Labour Market Conditions in the CER
 (Ages 25-54, January 2015 - July 2020, per cent)



Sources: Statistics Canada, Corporate Economics.

Chart 2. CER Employment Change by Industry
 (Monthly: June-July 2020, Annual: July 2019-July 2020, thousands)



Sources: Statistics Canada, Corporate Economics.



Table 1 Labour Force Statistics
(Seasonally unadjusted 3-month-moving-average)

CALGARY ECONOMIC REGION	Description	Jul-20	Jun-20	Jul-19	Annual Change	ALBERTA	Description	Jul-20	Jun-20	Jul-19	Annual Change
	Working Age Population ('000)	1,391.4	1,389.5	1,360.9	30.5		Working Age Population ('000)	3,575.4	3,572.5	3,522.2	53.2
Labour Force ('000)	985.3	947.0	1,003.5	(18.2)	Labour Force ('000)	2,460.1	2,383.6	2,544.1	(84.0)		
Labour Force Participation Rate (%)	70.8	68.2	73.7	(2.9)	Labour Force Participation Rate (%)	68.8	66.7	72.2	(3.4)		
Employment ('000)	838.9	805.3	938.2	(99.3)	Employment ('000)	2,103.0	2,031.4	2,370.5	(267.5)		
Employment Rate (%)	60.3	58.0	68.9	(8.6)	Employment Rate (%)	58.8	56.9	67.3	(8.5)		
Unemployment ('000)	146.5	141.7	65.3	81.2	Unemployment ('000)	357.1	352.2	173.6	183.5		
Unemployment Rate (%)	14.9	15.0	6.5	8.4	Unemployment Rate (%)	14.5	14.8	6.8	7.7		

Sources: Statistics Canada, Corporate Economics, August 7, 2020

Table 2 Calgary CMA Wage by Industry

Industry	Total employees*** ('000 persons)			Average weekly earning (\$)			Total weekly wage bill (\$million)			Total hours worked (hours)		
	Jul-20	Jul-19	Change (y/y)	Jul-20	Jul-19	Change (y/y)	Jul-20	Jul-19	Change (y/y)	Jul-20	Jul-19	Change (y/y)
Mining, quarrying, and oil and gas extraction	47.5	48.0	(0.5)	2,029.83	1,896.12	133.71	96.4	91.0	5.4	40.5	41.2	(0.7)
Utilities	9.9	8.4	1.5	1,968.10	2,105.93	(137.83)	19.5	17.7	1.8	39.4	39.6	(0.2)
Construction	52.5	62.0	(9.5)	1,552.29	1,328.48	223.81	81.5	82.4	(0.9)	41.1	40.6	0.5
Manufacturing	39.0	48.6	(9.6)	1,394.29	1,171.84	222.45	54.4	57.0	(2.6)	39.8	40.5	(0.7)
Wholesale Trade	30.2	26.4	3.8	1,338.98	1,263.20	75.78	40.4	33.3	7.1	38.4	40.7	(2.3)
Retail Trade	59.6	80.4	(20.8)	784.15	734.31	49.84	46.7	59.0	(12.3)	34.1	33.8	0.3
Transportation and Warehousing	39.4	50.7	(11.3)	1,388.88	1,441.05	(52.17)	54.7	73.1	(18.3)	39.4	38.6	0.8
Information and Cultural Industries	10.8	8.5	2.3	1,367.32	1,660.95	(293.63)	14.8	14.1	0.6	37.7	39.5	(1.9)
Finance and Insurance	23.2	28.2	(5.0)	1,348.16	1,315.33	32.83	31.3	37.1	(5.8)	37.2	38.0	(0.9)
Real Estate Rental and Leasing	9.0	12.1	(3.1)	1,151.93	1,094.55	57.38	10.4	13.2	(2.9)	37.4	38.6	(1.2)
Professional Scientific and Technical Services	59.1	71.9	(12.8)	1,639.97	1,540.76	99.21	96.9	110.8	(13.9)	38.5	37.5	1.0
Administrative and Support	24.8	23.3	1.5	1,114.63	960.48	154.15	27.6	22.4	5.3	39.2	36.9	2.3
Educational Services	45.8	48.8	(3.0)	1,273.16	1,229.55	43.61	58.3	60.0	(1.7)	35.3	34.7	0.6
Health Care and Social Assistance	83.2	89.8	(6.6)	1,171.23	1,077.30	93.93	97.4	96.7	0.7	34.4	34.5	(0.1)
Arts Entertainment and Recreation	14.7	18.3	(3.6)	719.09	694.50	24.59	10.6	12.7	(2.1)	29.6	32.7	(3.1)
Accommodation and Food Services	34.4	57.5	(23.1)	499.10	544.37	(45.27)	17.2	31.3	(14.1)	29.3	30.9	(1.6)
Other Services (except Public Admin)	26.5	36.9	(10.4)	901.55	1,038.34	(136.79)	23.9	38.3	(14.4)	35.0	37.0	(2.0)
Public Administration	29.4	38.9	(9.5)	1,704.69	1,605.58	99.11	50.1	62.5	(12.3)	38.1	38.3	(0.2)
All Industries	640.2	762.2	(122.0)	1,301.34	1,201.47	99.87	833.1	915.8	(82.6)	37.5	37.4	0.1

*** Excluding self-employed Note: lack of data for Agriculture
Sources: Statistics Canada, Corporate Economics, August 7, 2020

Next update: September 4, 2020

For media inquiry, please contact:
The Media Line at 403.828.2954 or media.relationships@calgary.ca

For the technical questions, please contact:

Ivy Zhang Acting City Economist ivy.zhang@calgary.ca	Kenneth Wyllie Corporate Economist kenneth.wyllie@calgary.ca	Estella Scruggs Corporate Research Analyst estella.scruggs@calgary.ca
---	---	--

Many of our publications are available on the internet at www.calgary.ca/economy.

The City of Calgary provides this information in good faith. However, the aforementioned organization makes no representation, warranty or condition, statutory express or implied, takes no responsibility for any errors and omissions which may contained herein and accepts no liability for any loss arising from any use or reliance on this report.

* Data used in this report for the Calgary Economic Region (CER) and Calgary Census Metropolitan Area (CCMA) is 3-month moving average, not seasonally adjusted.

** As of August 2, 2020 there have been 8,514,230 unique CERB applicants across Canada, with 1,023,110 of these applications coming from Alberta residents.