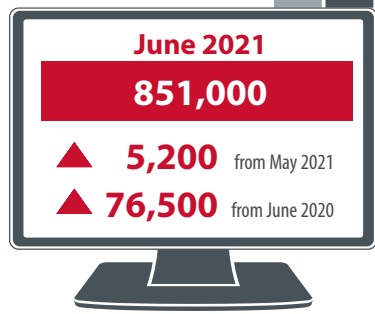


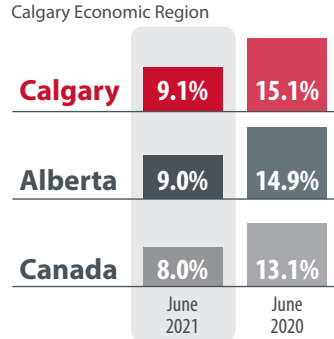
# Labour Market Review

## Highlights\*:

### Total Employment

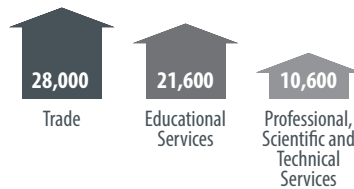


### Unemployment Rates



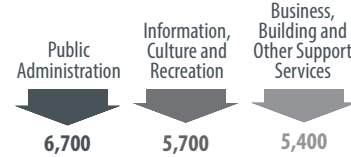
### Most Job Gains by Industry

June 2021, year-over-year change

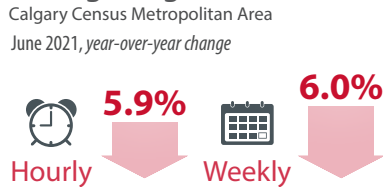


### Most Job Losses by Industry

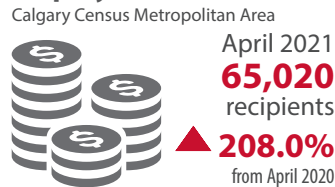
June 2021, year-over-year change



### Average Wage Rate



### Employment Insurance



## Calgary Regional Employment Improves amid Relaxation of Health-related Restrictions

The June Labour Force Survey was conducted on the week of June 13 to 19, following the start of Stage 2 of Alberta's reopening plan on June 10. In Stage 2, indoor recreation and entertainment facilities were permitted to reopen with restrictions, as were gyms and fitness studios. Restaurants were permitted to offer indoor dining, and occupancy limits for retail were increased.

As businesses reopened their doors, total employment in the Calgary Economic Region (CER) increased by 5,200 persons in June 2021 from the previous month. Since June 2020, total employment increased by 76,500 persons, the largest year-over-year increase on record for the CER going back to 1987. However, the three-month-average unemployment rate rose slightly to 9.1 per cent, as potential job seekers returned to the labour force. After reporting a higher three-month-average unemployment rate since the beginning of 2021, Alberta's rate fell below the CER to 9.0 per cent in June 2021. In Canada, the unemployment rate of 8.0 per cent remained lower than in the CER and Alberta.

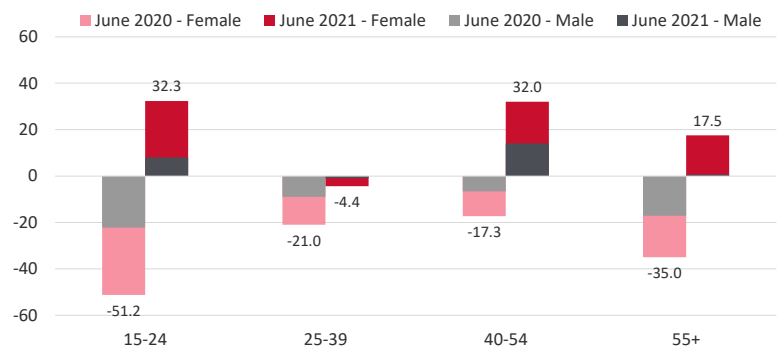
The month-over-month employment gains were led by growth in Wholesale Trade (+4,900) and Construction (+4,500) but offset by losses in Transportation and Warehousing (-3,400) and Mining and Oil and Gas Extraction (-3,000).

## Despite Calgary's Ongoing Recovery, Youth Unemployment Remains High

As seen in Chart 1, CER employment among youth aged 15-24 in June 2021 grew by 32,300 compared to a year earlier, following the year-over-year drop of 51,200 seen in June 2020. Despite having seen a relatively smaller drop in June 2020, employment among those aged 40-54 also experienced strong growth in June 2021, partially attributable to an increase in the population and labour force in that age group. The age group of 25-39 was the only to experience a decrease in employment since June 2020, corresponding to a decrease in the population for that age group. Chart 1 also shows that while women bore a higher share of job losses across all age groups in 2020, female employment has also accounted for most of the recovered jobs.

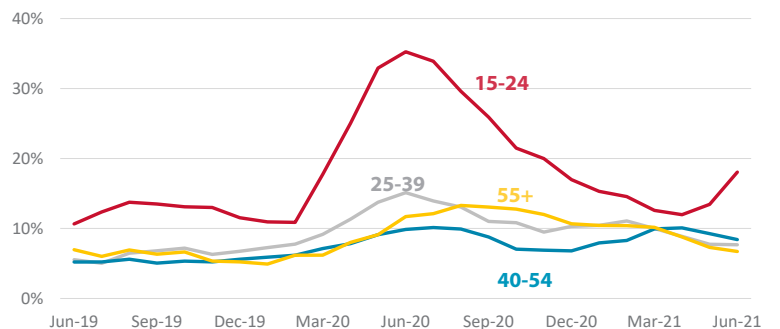
Chart 2 illustrates the unemployment rate by age group before and during the COVID-19 pandemic. While the youth unemployment rate (ages 15-24) skyrocketed at the beginning of the pandemic, reaching 35.2 per cent in June 2020, by April 2021 it had recovered to 12.0 per cent. However, limited youth employment growth over the past two months combined with an increase in labour force participation as students seek summer work has caused the youth employment rate to rise again, reaching 18.1 per cent in June 2021. Despite the recovery so far, the gap between the youth and total unemployment rates remains well above pre-pandemic levels.

Chart 1. CER Employment Growth by Age and Gender (year-over-year growth, thousands of persons)



Sources: Statistics Canada, Corporate Economics.

Chart 2. CER Unemployment Rate by Age Group (June 2019 to June 2021, per cent)



Sources: Statistics Canada, Corporate Economics.

**Table 1 Labour Force Statistics**  
(Seasonally unadjusted 3-month-moving-average)

CALGARY ECONOMIC REGION	Description	Jun-21	May-21	Jun-20	Annual Change	ALBERTA	Description	Jun-21	May-21	Jun-20	Annual Change
	Working Age Population ('000)	1,351.7	1,350.9	1,334.9	16.8		Working Age Population ('000)	3,536.4	3,535.0	3,502.5	33.9
Labour Force ('000)	936.7	928.9	911.8	24.9	Labour Force ('000)	2,452.2	2,443.0	2,340.9	111.3		
Labour Force Participation Rate (%)	69.3	68.8	68.3	1.0	Labour Force Participation Rate (%)	69.3	69.1	66.8	2.5		
Employment ('000)	851.0	845.8	774.5	76.5	Employment ('000)	2,232.4	2,216.1	1,992.6	239.8		
Employment Rate (%)	63.0	62.6	58.0	5.0	Employment Rate (%)	63.1	62.7	56.9	6.2		
Unemployment ('000)	85.6	83.1	137.3	(51.7)	Unemployment ('000)	219.8	226.9	348.3	(128.5)		
Unemployment Rate (%)	9.1	8.9	15.1	(6.0)	Unemployment Rate (%)	9.0	9.3	14.9	(5.9)		

Sources: Statistics Canada, Corporate Economics, July 9, 2021

**Table 2 Calgary CMA Wage by Industry**

Industry	Total employees*** ('000 persons)			Average weekly earning (\$)			Total weekly wage bill (\$million)			Total hours worked (hours)		
	Jun-21	Jun-20	Change (y/y)	Jun-21	Jun-20	Change (y/y)	Jun-21	Jun-20	Change (y/y)	Jun-21	Jun-20	Change (y/y)
Mining, quarrying, and oil and gas extraction	46.1	44.5	1.6	2,206.30	1,931.23	275.07	101.7	85.9	15.8	41.6	40.2	1.5
Utilities	9.3	10.2	(0.9)	1,961.80	1,928.53	33.27	18.2	19.7	(1.4)	40.2	39.5	0.7
Construction	55.7	48.0	7.7	1,356.20	1,510.84	(154.64)	75.5	72.5	3.0	40.5	40.2	0.3
Manufacturing	40.6	36.5	4.1	1,312.00	1,432.84	(120.84)	53.3	52.3	1.0	40.5	39.7	0.8
Wholesale Trade	25.4	27.4	(2.0)	1,358.40	1,384.84	(26.44)	34.5	37.9	(3.4)	39.7	38.7	1.0
Retail Trade	78.3	56.9	21.4	797.50	784.73	12.77	62.4	44.7	17.8	34.8	34.4	0.4
Transportation and Warehousing	36.4	35.4	1.0	1,396.20	1,429.73	(33.53)	50.8	50.6	0.2	39.4	39.7	(0.2)
Information and Cultural Industries	12.2	11.4	0.8	1,672.80	1,312.64	360.16	20.4	15.0	5.4	39.7	37.2	2.5
Finance and Insurance	24.7	18.4	6.3	1,370.20	1,370.50	(0.30)	33.8	25.2	8.6	39.0	38.2	0.8
Real Estate Rental and Leasing	14.5	9.2	5.3	1,076.50	1,137.35	(60.85)	15.6	10.5	5.1	36.1	36.9	(0.7)
Professional Scientific and Technical Services	62.7	55.6	7.1	1,426.50	1,605.39	(178.89)	89.4	89.3	0.2	38.7	38.5	0.1
Administrative and Support	20.3	21.3	(1.0)	927.70	1,113.98	(186.28)	18.8	23.7	(4.9)	38.7	39.0	(0.3)
Educational Services	68.0	47.9	20.1	1,197.00	1,267.63	(70.63)	81.4	60.7	20.7	35.1	35.3	(0.2)
Health Care and Social Assistance	96.8	76.9	19.9	1,045.60	1,240.77	(195.17)	101.2	95.4	5.8	33.6	35.3	(1.7)
Arts Entertainment and Recreation	6.8	12.2	(5.4)	982.50	943.67	38.83	6.7	11.5	(4.8)	35.5	34.3	1.2
Accommodation and Food Services	34.2	28.7	5.5	481.90	543.38	(61.48)	16.5	15.6	0.9	26.6	30.9	(4.2)
Other Services (except Public Admin)	30.4	23.2	7.2	1,041.00	1,003.20	37.80	31.6	23.3	8.4	38.1	35.6	2.5
Public Administration	19.8	27.6	(7.8)	1,726.90	1,689.16	37.74	34.2	46.6	(12.4)	37.8	37.6	0.2
<b>All Industries</b>	<b>684.0</b>	<b>592.3</b>	<b>91.7</b>	<b>1,240.10</b>	<b>1,319.07</b>	<b>(78.97)</b>	<b>848.2</b>	<b>781.3</b>	<b>66.9</b>	<b>37.6</b>	<b>37.6</b>	<b>(0.0)</b>

\*\*\* Excluding self-employed Note: lack of data for Agriculture  
Sources: Statistics Canada, Corporate Economics, July 9, 2021

Next update: August 6, 2021

For media inquiry, please contact:  
The Media Line at 403.828.2954 or media.relationships@calgary.ca

For the technical questions, please contact:

<b>Chukwudi Osuji</b> Acting City Economist chukwudi.osuji@calgary.ca	<b>Gilbert Lybbert</b> Associate Economist gilbert.lybbert@calgary.ca	<b>Estella Scruggs</b> Corporate Research Analyst estella.scruggs@calgary.ca
---	---	--

Many of our publications are available on the internet at [www.calgary.ca/economy](http://www.calgary.ca/economy).

The City of Calgary provides this information in good faith. However, the aforementioned organization makes no representation, warranty or condition, statutory express or implied, takes no responsibility for any errors and omissions which may contained herein and accepts no liability for any loss arising from any use or reliance on this report.

\* Data used in this report for the Calgary Economic Region (CER) and Calgary Census Metropolitan Area (CMA) is 3-month moving average, not seasonally adjusted.  
Note: In February 2021, Statistics Canada revised its Labour Force Survey estimates including historical data.