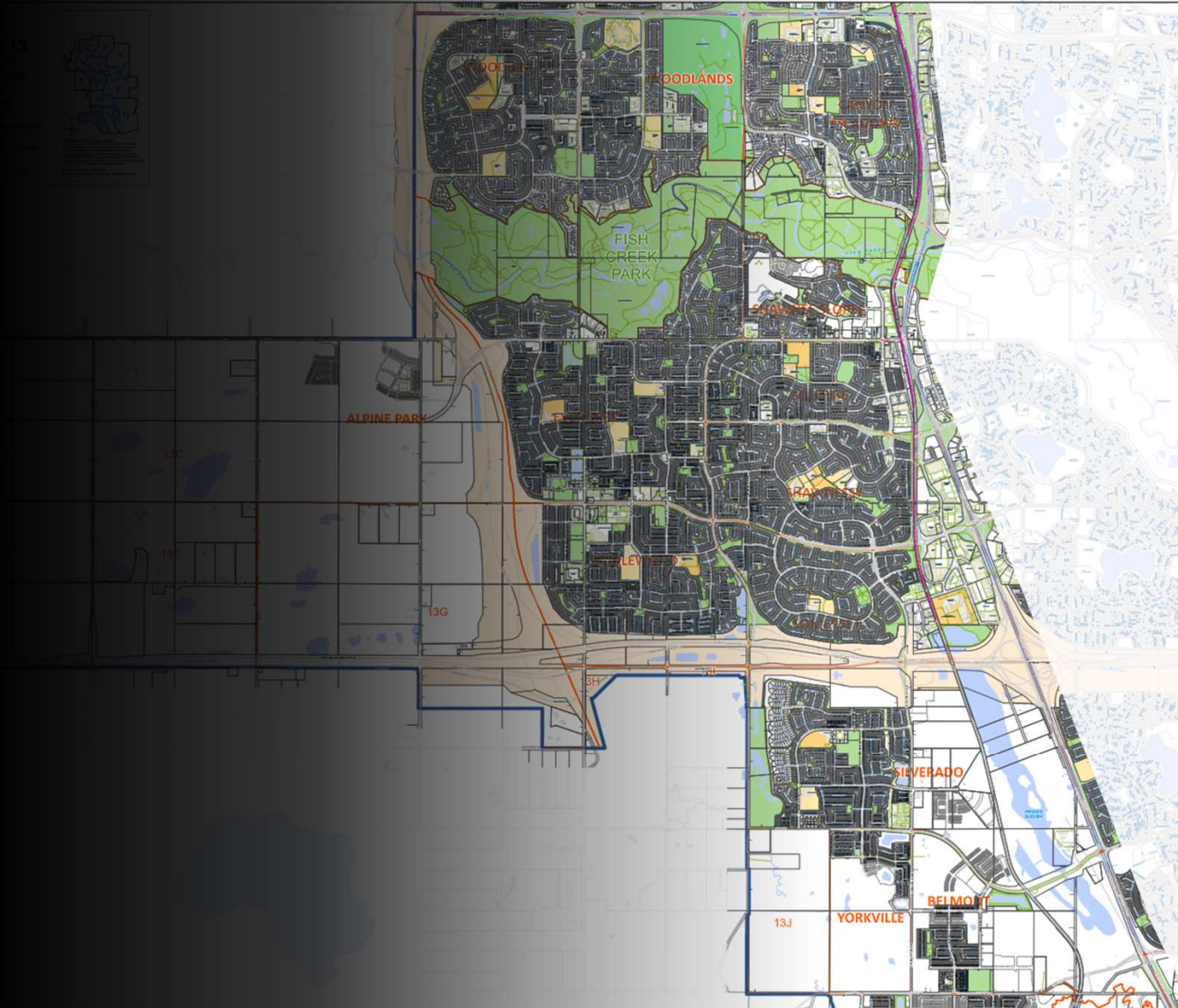


Ward 13 President's Meeting – April 2023



Why We Are Here

- Bringing Ward 13 Communities Together
- Finding Common Ground
- How Can the Ward 13 Office Help?
 - Advocacy for Community Initiatives
 - Support With City Administration
 - WCEF Grants for Funding Events
 - Assistance with Development Issues
 - Communications with Residents
- We are here to Listen
- Foundation for Future Meetings

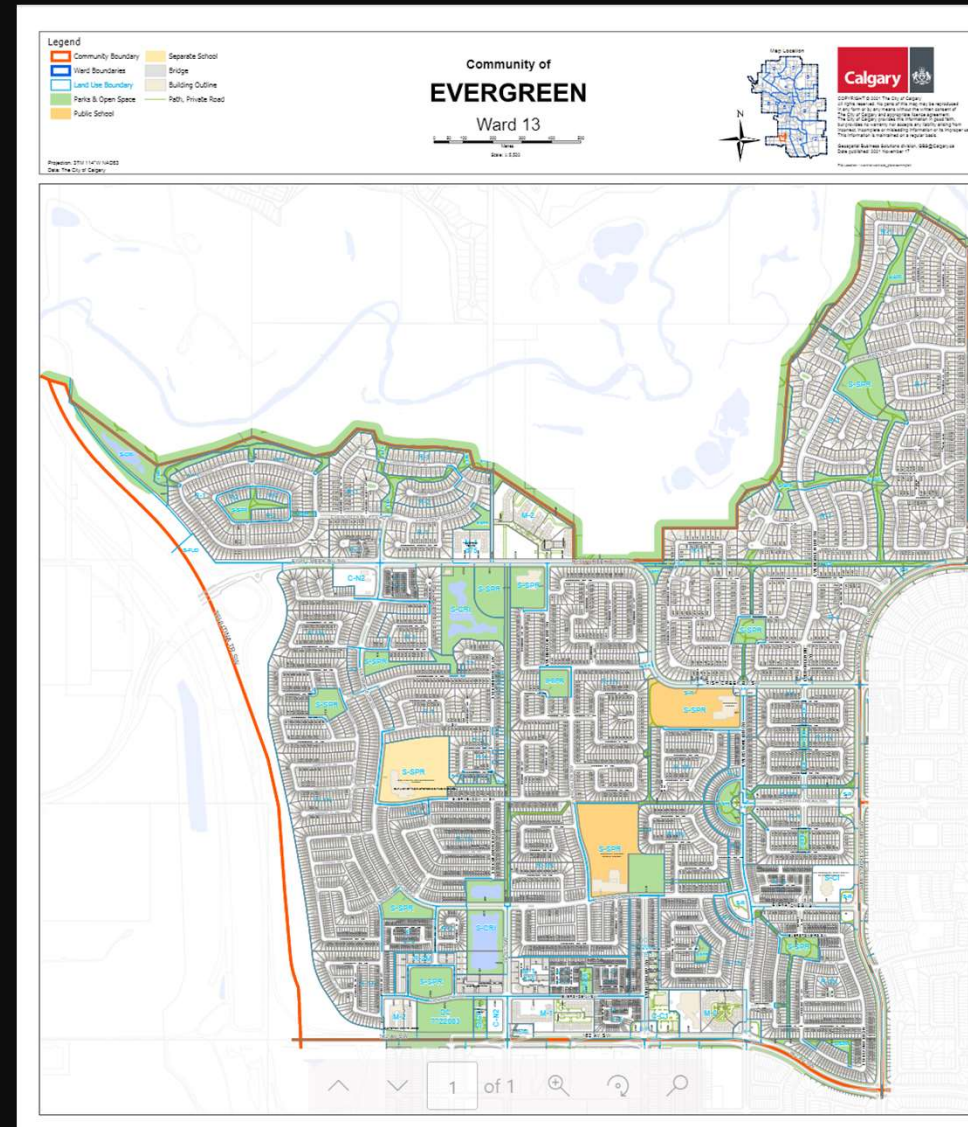


FEDERATION OF
CALGARY COMMUNITIES

How Can They Support Your Community?

Calgary Evergreen Community Association

Vice President - Paul Bushell





Canyon Meadows Community Association -
President Michael Richmond

Legend
 Community Boundary (Orange outline)
 Ward Boundaries (Blue outline)
 Land Use Boundary (Green outline)
 Parks & Open Space (Green fill)
 Separate School (Yellow fill)
 Bridge (Grey fill)
 Building Outline (Thin grey line)
 LRT Line (Pink line)
 LRT Line (Underground) (Dashed pink line)
 Railway Line (Black line)
 Path, Private Road (Thin grey line)

Community of MILLRISE
Ward 13

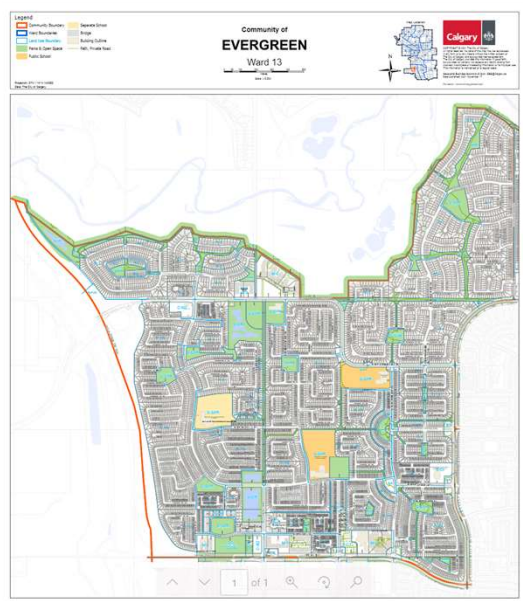
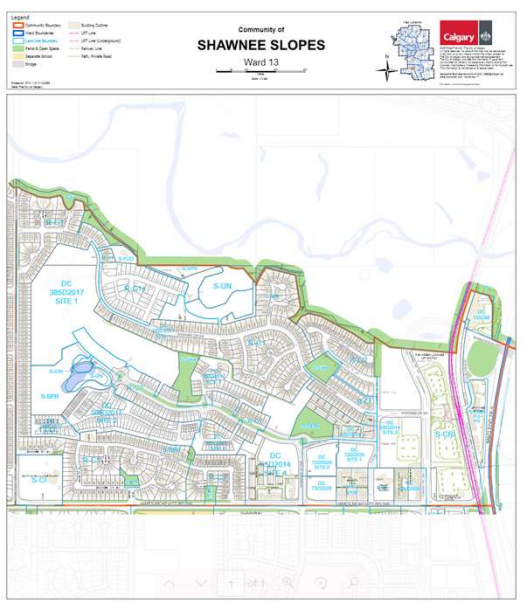
Scale: 1:1000
 Date: 11/2011

City of Calgary
 2011 Planning Department
 1000 - 10th Street S.W., Calgary, Alberta T2P 1C1
 Phone: 403.243.1000
 Fax: 403.243.1001
 Website: www.calgary.ca



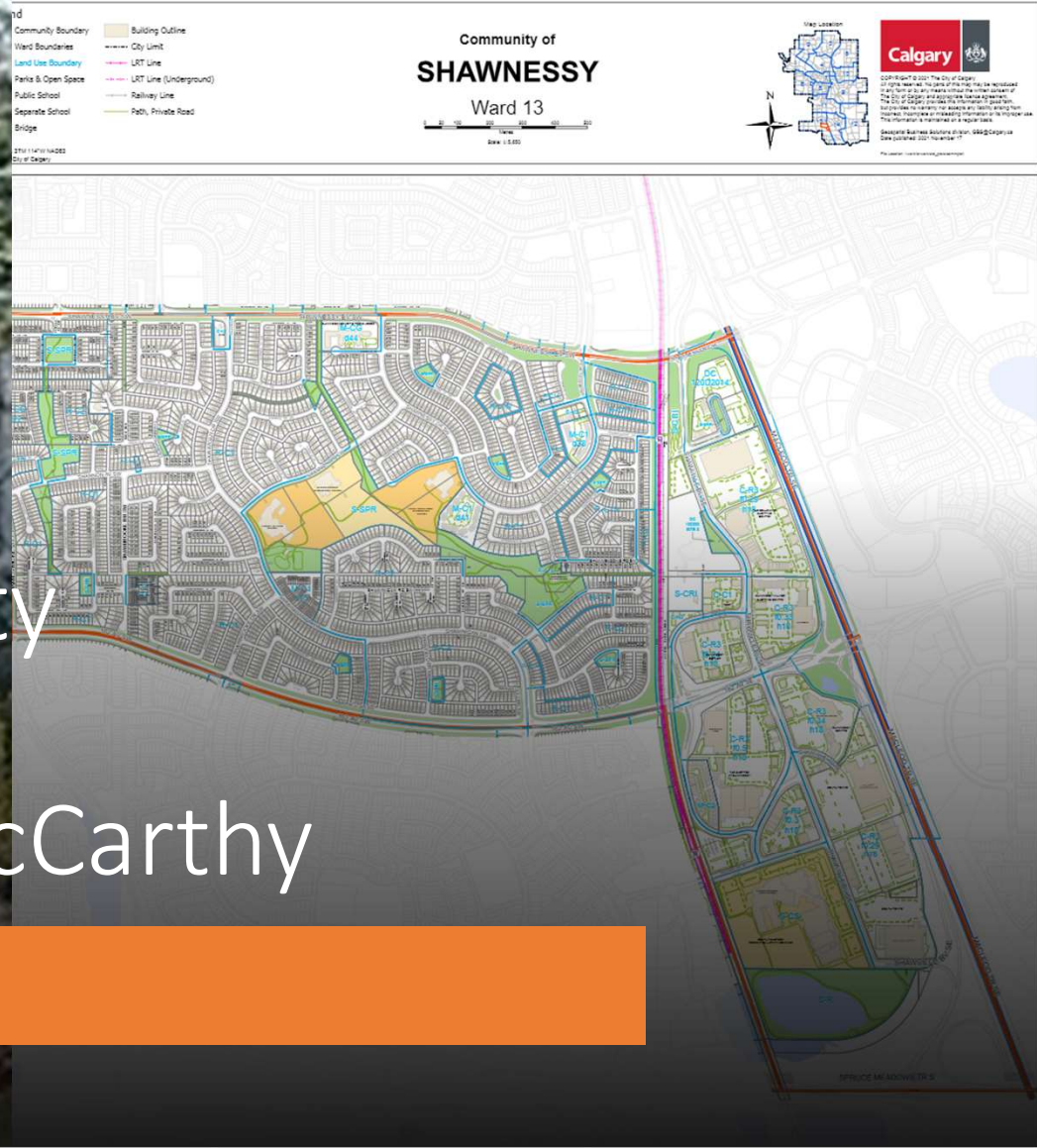
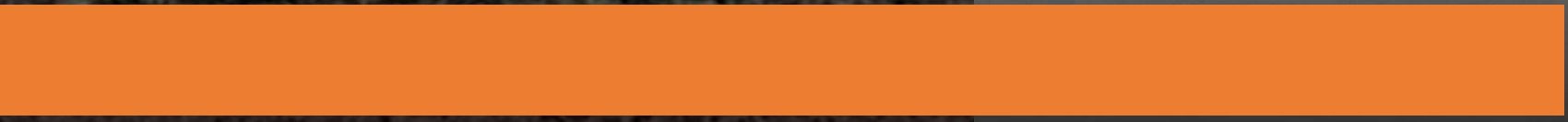
Millrise Community Association –
 President Donna Kindrachuk

Shawnee Evergreen Community Association – President Lynn Jobe





Shawnessy Community Association - President Marshall McCarthy





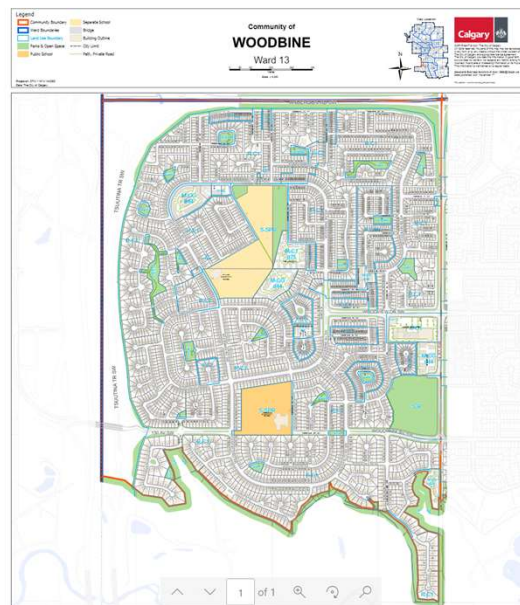
Silverado Community Association -
President Barbra Deskin



Somerset-Bridlewood
Community Association
– President Sarah Milne



Woodcreek Community Association President Keith Cartmell



Meeting Summary & Questions

