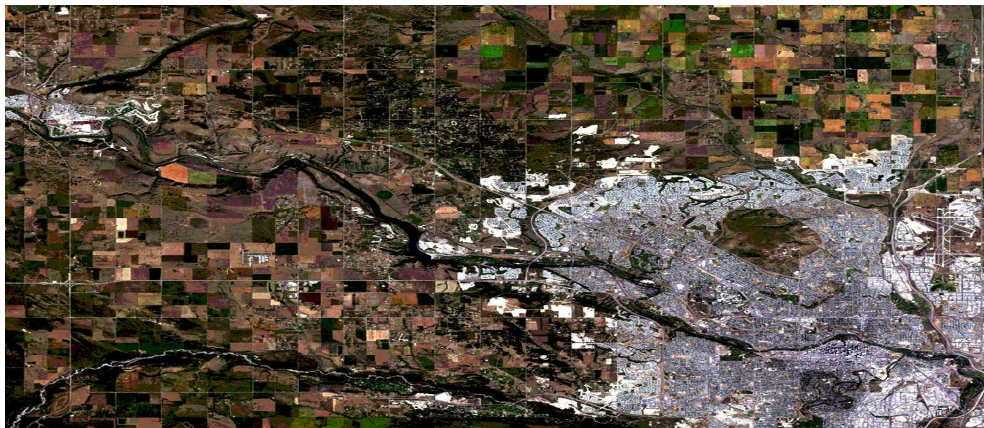
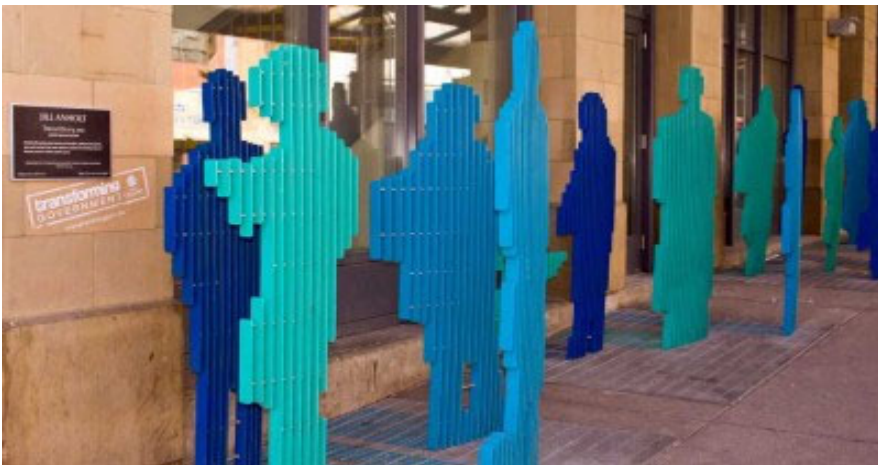




# 2nd Quarter 2019 Statistical Report

Compiled by: Centralized Analysis Unit  
CIAS, Strategic Services Division  
© Calgary Police Service 2019



The Calgary Police Service provides this information in good faith but it provides no warranty, nor accepts any liability arising from any incorrect, incomplete or misleading information.



## Table of Contents

<b>Calgary Crime Statistics</b>	<b>1</b>
<b>Person Crimes</b>	<b>2</b>
<b>Property Crimes</b>	<b>3</b>
<b>Other Criminal Code Crimes and Selected Other</b>	<b>4</b>
<b>Weapons and Intimidation usage in Violent Crime</b>	<b>5</b>
<b>Domestic Related</b>	<b>6</b>
<b>Youth Related Crime</b>	<b>7</b>
<b>Calgary Disorder Statistics</b>	<b>8</b>
<b>Calls for Service</b>	<b>9</b>
<b>Calgary Crime Statistics—Detailed Breakdown</b>	<b>10</b>

### REPORT NOTES

Most of the statistical data in this report is derived from the Calgary Police Service records management system (SENTRY) and compiled by the Centralized Analysis Unit. Disorder data is derived from the Computer aided Dispatch (CAD) system.

Reporting is based on the most serious offence in the incident. Please note that offences are assigned to the month in which the offence was reported, which is not necessarily the month the offence occurred. The reported date is the first point in time at which the police were notified of the offence and reporting lag may vary due to circumstances (these are typically property crimes where the victim did not report the offence until a later date, or was unaware of the loss until a later date, or late-reported sexual assaults). Also note that “attempted” offences are included in these totals. Person crime offences, excluding robbery, are counted by the number of victims, using the most serious offence against the victim. Robbery, and all other crimes at the incident level, is counted using the most serious offence in the incident. Of note, cases are often cleared months and sometimes years later. Consequently, clearance rates for previous years may appear to be much higher than those of the present year. Cases “cleared by charge” and those “cleared otherwise” are included in these clearance rate totals.

For a more detailed explanation of the offence counting methodology, please contact the Centralized Analysis Unit.



# Calgary Crime Statistics

2nd QUARTER 2019

	2nd Quarter				Year to Date				
	2018	2019	5yr AVG (2014-2018)	% Change (5 Year)	2018	2019	5yr AVG (2014-2018)	% Change (5 Year)	% Cleared 2019
<b>PERSON CRIMES<sup>1</sup></b>									
Homicide <sup>2</sup>	5	9	7.2	25.0%	7	12	12.2	-1.6%	58.3%
Other Offences Causing Death	1	0	0.6	-100.0%	1	0	0.6	-100.0%	-
Attempted Homicide	3	3	2.4	25.0%	7	6	5.2	15.4%	50.0%
Sex Offences	359	294	266.6	10.3%	684	597	508.0	17.5%	24.3%
Robbery <sup>3</sup>									
Financial	9	4	8.8	-54.5%	21	11	19.2	-42.7%	18.2%
Commercial	85	67	64.6	3.7%	156	149	141.2	5.5%	28.9%
Home Invasion	16	15	15.6	-3.8%	36	34	33.8	0.6%	26.5%
Person	173	148	139.2	6.3%	286	284	257.2	10.4%	25.0%
Robbery of Firearm	0	1	0.0	n/a	0	1	0.0	n/a	100.0%
<b>Total Robbery</b>	<b>283</b>	<b>235</b>	<b>228.2</b>	<b>3.0%</b>	<b>499</b>	<b>479</b>	<b>451.4</b>	<b>6.1%</b>	<b>26.3%</b>
Assault									
Level 3 - Aggravated	21	32	23.4	36.8%	31	53	43.0	23.3%	83.0%
Level 2 - Weapon/Bodily Harm	699	639	481.6	32.7%	1237	1274	891.0	43.0%	50.9%
Level 1 - Common Assault	1604	1559	1260.6	23.7%	3016	2941	2414.6	21.8%	49.7%
Assault Police Officer	85	74	67.8	9.1%	149	151	128.6	17.4%	35.7%
Discharge Firearm with Intent	4	19	4.2	352.4%	7	31	7.4	318.9%	16.1%
Other Assaults	30	25	19.8	26.3%	44	52	31.8	63.5%	73.1%
<b>Total Assault</b>	<b>2443</b>	<b>2348</b>	<b>1857.4</b>	<b>26.4%</b>	<b>4484</b>	<b>4502</b>	<b>3516.4</b>	<b>28.0%</b>	<b>52.0%</b>
Miscellaneous Person Crime	454	482	382.8	25.9%	908	992	758.8	30.7%	39.9%
<b>TOTAL PERSON CRIMES</b>	<b>3548</b>	<b>3371</b>	<b>2744.0</b>	<b>22.8%</b>	<b>6590</b>	<b>6588</b>	<b>5250.8</b>	<b>25.5%</b>	<b>45.8%</b>
<b>PROPERTY CRIMES</b>									
Break and Enter									
Dwelling	612	564	682.8	-17.4%	1221	1011	1273.8	-20.6%	9.6%
Commercial	1207	1418	954.8	48.5%	2335	2875	1849.0	55.5%	6.7%
Other B&E	598	582	513.0	13.5%	944	1055	842.4	25.2%	2.4%
Unlawfully in Residence	12	10	10.0	0.0%	24	28	19.4	44.3%	60.7%
B&E Firearms	7	13	15.4	-15.6%	12	23	29.0	-20.7%	4.3%
<b>Total Break and Enter</b>	<b>2436</b>	<b>2587</b>	<b>2176.0</b>	<b>18.9%</b>	<b>4536</b>	<b>4992</b>	<b>4013.6</b>	<b>24.4%</b>	<b>6.7%</b>
<b>Total Theft</b>	<b>7380</b>	<b>8161</b>	<b>6637.2</b>	<b>23.0%</b>	<b>13538</b>	<b>15000</b>	<b>12228.8</b>	<b>22.7%</b>	<b>14.6%</b>
Vehicle Theft (incl attempts)	1613	1594	1374.2	16.0%	3461	3143	2777.6	13.2%	4.9%
Fraud	1423	1418	1069.6	32.6%	2722	2863	2096.2	36.6%	19.0%
Other Property Crimes	1341	1363	1383.0	-1.4%	2355	2465	2501.2	-1.4%	11.1%
<b>TOTAL PROPERTY CRIMES</b>	<b>14193</b>	<b>15123</b>	<b>12640.0</b>	<b>19.6%</b>	<b>26612</b>	<b>28463</b>	<b>23617.4</b>	<b>20.5%</b>	<b>12.3%</b>
<b>OTHER CRIMINAL CODE</b>									
Vice	21	3	19.8	-84.8%	29	18	28.0	-35.7%	77.8%
Gaming	0	0	0.0	n/a	0	0	0.2	-100.0%	-
Weapon Related	109	137	88.6	54.6%	186	276	168.6	63.7%	93.8%
Miscellaneous	2577	1902	1409.2	35.0%	4883	4372	2645.8	65.2%	92.7%
<b>TOTAL OTHER CRIMINAL CODE</b>	<b>2707</b>	<b>2042</b>	<b>1517.6</b>	<b>34.6%</b>	<b>5098</b>	<b>4666</b>	<b>2842.6</b>	<b>64.1%</b>	<b>92.7%</b>
<b>SELECTED OTHER</b>									
Criminal Code Traffic	370	356	390.6	-8.9%	743	726	808.6	-10.2%	92.4%
Drugs	363	292	328.2	-11.0%	688	600	649.4	-7.6%	91.2%
Selected Non-Criminal									
Missing Person <sup>4</sup>	1019	1026	957.0	7.2%	1818	1895	1700.2	11.5%	
Domestic Information	3541	3265	3287.2	-0.7%	6844	6382	6373.6	0.1%	
Domestic Standby	288	211	254.8	-17.2%	525	427	483.6	-11.7%	N/A
<b>Total Selected Non-Criminal</b>	<b>4848</b>	<b>4502</b>	<b>4499.0</b>	<b>0.1%</b>	<b>9187</b>	<b>8704</b>	<b>8557.4</b>	<b>1.7%</b>	
<b>Total Selected Other</b>	<b>5581</b>	<b>5150</b>	<b>5217.8</b>	<b>-1.3%</b>	<b>10618</b>	<b>10030</b>	<b>10015.4</b>	<b>0.1%</b>	

Source: Sentry, July 2019

<sup>1</sup> Person crimes are counted at the victim level using the most serious violation against each victim in an incident. <sup>2</sup> Due to the dynamic nature of homicide investigations these numbers may have been updated manually to reflect the current homicide count. Due to manual updating, it's possible that 1 or more homicides may be reflected in the assault category. Homicide counts are provided by the homicide unit. <sup>3</sup> Robbery and all other crimes, as well as selected domestic non-criminal incidents, are counted at the incident level using the most serious offence in the incident. <sup>4</sup> Missing persons are counted by the number of missing individuals.

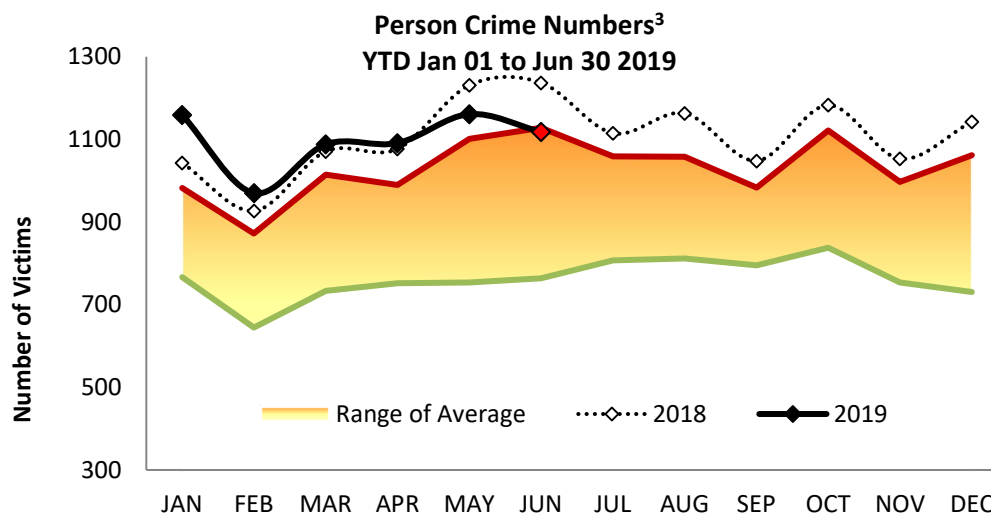


# Calgary Person Crime Statistics

2nd QUARTER 2019

	2nd Quarter Number of Victims				Year to Date Number of Victims				
	2018	2019	5yr AVG (2014-2018)	% Change (5 Year)	2018	2019	5yr AVG (2014-2018)	% Change (5 Year)	% Cleared 2019
<b>PERSON CRIMES*</b>									
Homicide <sup>1</sup>	5	9	7.2	25.0%	7	12	12.2	-1.6%	33.3%
Other Offences Causing Death	1	0	0.6	-100.0%	1	0	0.6	-100.0%	-
Attempted Homicide	3	3	2.4	25.0%	7	6	5.2	15.4%	50.0%
Sex Offences	359	294	266.6	10.3%	684	597	508	17.5%	24.3%
Robbery <sup>2</sup>									
Financial	9	4	8.8	-54.5%	21	11	19.2	-42.7%	18.2%
Commercial	85	67	64.6	3.7%	156	149	141.2	5.5%	28.9%
Home Invasion	16	15	15.6	-3.8%	36	34	33.8	0.6%	26.5%
Person	173	148	139.2	6.3%	286	284	257.2	10.4%	25.0%
Robbery of Firearm	0	1	0	n/a	0	1	0	n/a	100.0%
<b>Total Robbery</b>	<b>283</b>	<b>235</b>	<b>228.2</b>	<b>3.0%</b>	<b>499</b>	<b>479</b>	<b>451.4</b>	<b>6.1%</b>	<b>26.3%</b>
Assault									
Level 3 - Aggravated	21	32	23.4	36.8%	31	53	43	23.3%	83.0%
Level 2 - Weapon/Bodily Harm	699	639	481.6	32.7%	1237	1274	891	43.0%	50.9%
Level 1 - Common Assault	1604	1559	1260.6	23.7%	3016	2941	2414.6	21.8%	49.7%
Assault Police Officer	85	74	67.8	9.1%	149	151	128.6	17.4%	35.7%
Discharge Firearm with Intent	4	19	4.2	352.4%	7	31	7.4	318.9%	16.1%
Other Assaults	30	25	19.8	26.3%	44	52	31.8	63.5%	73.1%
<b>Total Assault</b>	<b>2443</b>	<b>2348</b>	<b>1857.4</b>	<b>26.4%</b>	<b>4484</b>	<b>4502</b>	<b>3516.4</b>	<b>28.0%</b>	<b>52.0%</b>
Miscellaneous Person Crime	454	482	382.8	25.9%	908	992	758.8	30.7%	39.9%
<b>TOTAL PERSON CRIMES</b>	<b>3548</b>	<b>3371</b>	<b>2744</b>	<b>22.8%</b>	<b>6590</b>	<b>6588</b>	<b>5250.8</b>	<b>25.5%</b>	<b>45.8%</b>

Source: Sentry, July 2019



<sup>1</sup>Due to the dynamic nature of homicide investigations these numbers may have been updated manually to reflect the current homicide count. Due to manual updating, it's possible that 1 or more homicides may be reflected in the assault category. Homicide counts are provided by the homicide unit. <sup>2</sup>Robbery is counted at the incident level, rather than at the victim level in accordance with Uniform Crime Reporting counting standards. <sup>3</sup>The range of average is calculated as 1 standard deviation above and 1 below the calculated average for the previous five year period.

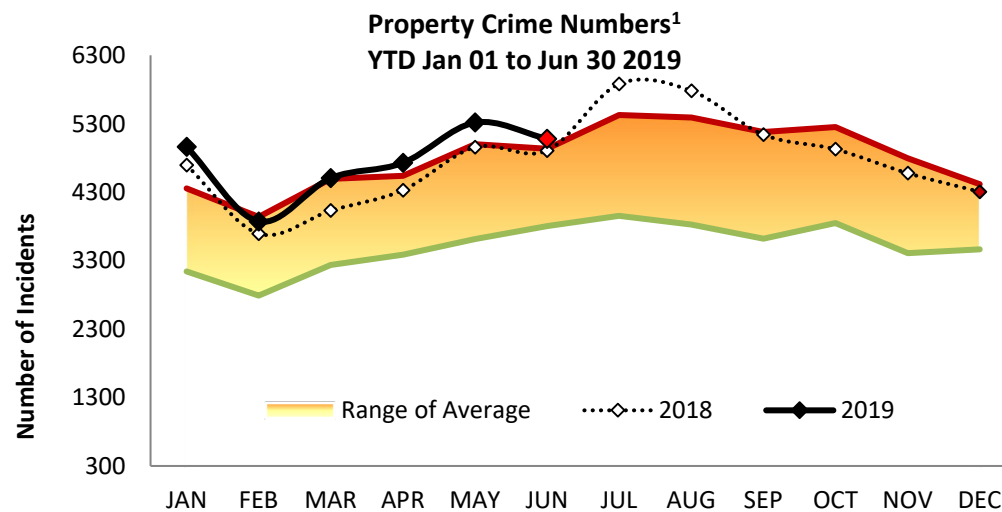


# Calgary Property Crime Statistics

2nd QUARTER 2019

	2nd Quarter Number of Incidents				Year to Date Number of Incidents				
	2018	2019	5yr AVG (2014-2018)	% Change (5 Year)	2018	2019	5yr AVG (2014-2018)	% Change (5 Year)	% Cleared 2019
<b>PROPERTY CRIMES</b>									
<b>Break and Enter</b>									
Dwelling	612	564	682.8	-17.4%	1221	1011	1273.8	-20.6%	9.6%
Commercial	1207	1418	954.8	48.5%	2335	2875	1849.0	55.5%	6.7%
Other B&E	598	582	513.0	13.5%	944	1055	842.4	25.2%	2.4%
Unlawfully in Residence	12	10	10.0	0.0%	24	28	19.4	44.3%	60.7%
B&E Firearms	7	13	15.4	-15.6%	12	23	29.0	-20.7%	4.3%
<b>Total Break and Enter</b>	<b>2436</b>	<b>2587</b>	<b>2176.0</b>	<b>18.9%</b>	<b>4536</b>	<b>4992</b>	<b>4013.6</b>	<b>24.4%</b>	<b>6.7%</b>
<b>Theft</b>	<b>7380</b>	<b>8161</b>	<b>6637.2</b>	<b>23.0%</b>	<b>13538</b>	<b>15000</b>	<b>12228.8</b>	<b>22.7%</b>	<b>14.6%</b>
<b>Vehicle Theft (incl attempts)</b>	<b>1613</b>	<b>1594</b>	<b>1374.2</b>	<b>16.0%</b>	<b>3461</b>	<b>3143</b>	<b>2777.6</b>	<b>13.2%</b>	<b>4.9%</b>
<b>Fraud</b>	<b>1423</b>	<b>1418</b>	<b>1069.6</b>	<b>32.6%</b>	<b>2722</b>	<b>2863</b>	<b>2096.2</b>	<b>36.6%</b>	<b>19.0%</b>
<b>Other Property Crimes</b>	<b>1341</b>	<b>1363</b>	<b>1383.0</b>	<b>-1.4%</b>	<b>2355</b>	<b>2465</b>	<b>2501.2</b>	<b>-1.4%</b>	<b>11.1%</b>
<b>TOTAL PROPERTY CRIMES</b>	<b>14193</b>	<b>15123</b>	<b>12640.0</b>	<b>19.6%</b>	<b>26612</b>	<b>28463</b>	<b>23617.4</b>	<b>20.5%</b>	<b>12.3%</b>

Source: Sentry, July 2019



<sup>1</sup>The range of average is calculated as 1 standard deviation above and 1 below the calculated average for the previous five year period.



## Calgary Other Crime Statistics

2nd QUARTER 2019

	2nd Quarter Number of Incidents				Year to Date Number of Incidents				
	2018	2019	5yr AVG (2014-2018)	% Change (5 Year)	2018	2019	5yr AVG (2014-2018)	% Change (5 Year)	% Cleared
									2019
<b>OTHER CRIMINAL CODE</b>									
Vice	21	3	19.8	-84.8%	29	18	28.0	-35.7%	77.8%
Gaming	0	0	0.0	0.0%	0	0	0.2	-100.0%	-
Weapon Related	109	137	88.6	54.6%	186	276	168.6	63.7%	93.8%
Miscellaneous	2577	1902	1409.2	35.0%	4883	4372	2645.8	65.2%	92.7%
<b>TOTAL OTHER CRIMINAL CODE</b>	<b>2707</b>	<b>2042</b>	<b>1517.6</b>	<b>34.6%</b>	<b>5098</b>	<b>4666</b>	<b>2842.6</b>	<b>64.1%</b>	<b>92.7%</b>
<b>SELECTED OTHER</b>									
Criminal Code Traffic	370	356	390.6	-8.9%	743	726	808.6	-10.2%	92.4%
Drugs	363	292	328.2	-11.0%	688	600	649.4	-7.6%	91.2%
<b>Selected Non-Criminal</b>									
Missing Person <sup>1</sup>	1019	1026	957.0	7.2%	1818	1895	1700.2	11.5%	
Domestic Information	3541	3265	3287.2	-0.7%	6844	6382	6373.6	0.1%	
Domestic Standby	288	211	254.8	-17.2%	525	427	483.6	-11.7%	N/A
<b>Total Selected Non-Criminal</b>	<b>4848</b>	<b>4502</b>	<b>4499.0</b>	<b>0.1%</b>	<b>9187</b>	<b>8704</b>	<b>8557.4</b>	<b>1.7%</b>	
<b>Total Selected Other</b>	<b>10429</b>	<b>9652</b>	<b>5217.8</b>	<b>85.0%</b>	<b>19805</b>	<b>18734</b>	<b>10015.4</b>	<b>87.1%</b>	

Source: Sentry, July 2019

### Drug Incidents<sup>2</sup>

	2nd Quarter				Year to Date				
	2018	2019	5yr AVG (2014-2018)	% Change (5 Year)	2018	2019	5yr AVG (2014-2018)	% Change (5 Year)	Trend
<b>DRUGS</b>									
Demand	253	193	205.0	-5.9%	485	376	412.8	-8.9%	
Supply	110	99	123.2	-19.6%	203	224	236.6	-5.3%	
<b>Total</b>	<b>363</b>	<b>292</b>	<b>328.2</b>	<b>-11.0%</b>	<b>688</b>	<b>600</b>	<b>649.4</b>	<b>-7.6%</b>	
<b>Drug Type</b>									
Cannabis	76	7	117.4	-94.0%	164	11	232.0	-95.3%	
Cocaine/Crack	60	47	80.2	-41.4%	126	99	172.8	-42.7%	
Heroin	20	21	20.0	5.0%	60	39	42.6	-8.5%	
Methamphetamine/Crystal Meth	121	172	64.6	166.3%	239	336	126.0	166.7%	
Opiates	15	30	14.4	108.3%	31	55	29.8	84.6%	
All Other Drugs	33	31	24.6	26.0%	68	60	46.2	29.9%	
<b>Total</b>	<b>325</b>	<b>308</b>	<b>321.2</b>	<b>-4.1%</b>	<b>688</b>	<b>600</b>	<b>649.4</b>	<b>-7.6%</b>	

Source: Sentry, July 2019

<sup>1</sup>Missing persons are counted by the number of missing individuals.

<sup>2</sup>'Demand' is a roll-up of all possession drug incidents where the drug offence represented the most serious offence on the incident; 'Supply' includes possession for the purpose of trafficking, trafficking, importation/exportation and cultivation.



# Weapons and Intimidation Usage in Violent Crime

2nd QUARTER 2019

## Most Serious Weapon Present

WEAPON TYPE	2nd Quarter Number of Incidents				Year to Date Number of Incidents			
	2018	2019	5yr AVG (2014-2018)	% Change (5 Year)	2018	2019	5yr AVG (2014-2018)	% Change (5 Year)
Firearm	100	78	74.8	4.3%	185	172	145.2	18.5%
Edged Weapon	241	194	194.6	-0.3%	425	394	388.2	1.5%
Club/Blunt Object	77	62	56.0	10.7%	132	120	99.4	20.7%
Other Weapon	380	396	294.2	34.6%	657	775	544.4	42.4%
Unknown	67	47	37.2	26.3%	116	89	74.4	19.6%
Physical force	1945	1735	1460.8	18.8%	3623	3373	2794.4	20.7%
Verbal Threat	257	249	176.6	41.0%	526	514	351.6	46.2%
No weapon	190	268	200.6	33.6%	371	518	388.6	33.3%
<b>Total</b>	<b>3257</b>	<b>3029</b>	<b>2494.8</b>	<b>21.4%</b>	<b>6035</b>	<b>5955</b>	<b>4786.2</b>	<b>24.4%</b>

Source: Sentry (BI), July 2019

Unit of Count: Incident based on reporting date. Most serious weapon present per incident where at least one violent offence occurred.

## Injury Level of Victims by Weapon Type (Most serious weapon Used)

WEAPON TYPE	2nd Quarter Number of Incidents					Year to Date Number of Incidents				
	Death	Major	Minor	Unknown / Not Stated	Total	Death	Major	Minor	Unknown / Not Stated	Total
Firearm	2	6	8	0	16	2	14	10	0	26
Edged Weapon	1	43	15	1	60	2	86	32	1	121
Club	0	14	21	0	35	0	25	35	0	60
Other	1	39	198	6	244	1	87	355	11	454
Physical force	1	135	841	26	1003	1	278	1593	51	1923
Unknown	2	7	10	23	42	3	18	21	29	71
<b>TOTAL INJURED</b>	<b>7</b>	<b>244</b>	<b>1093</b>	<b>56</b>	<b>1400</b>	<b>9</b>	<b>508</b>	<b>2046</b>	<b>92</b>	<b>2655</b>

Source: Sentry (BI), July 2019

Unit of Count: Victim. Most serious injury sustained per victim of violent offence incident.

<sup>1</sup> "Edged weapon" includes weapons classified as cutting and piercing instruments.

<sup>2</sup> "Other" weapons include any physical object not classified otherwise, such as fire, vehicle, body fluids, beverages and their containers, strangulation/ligature instruments, etc.

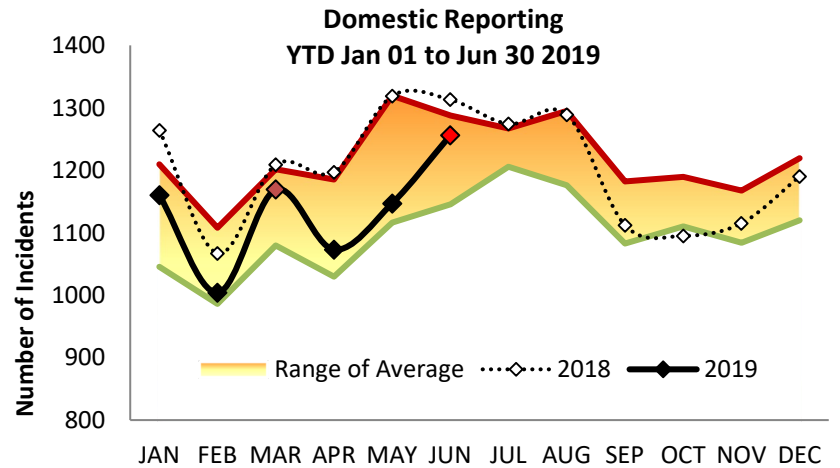
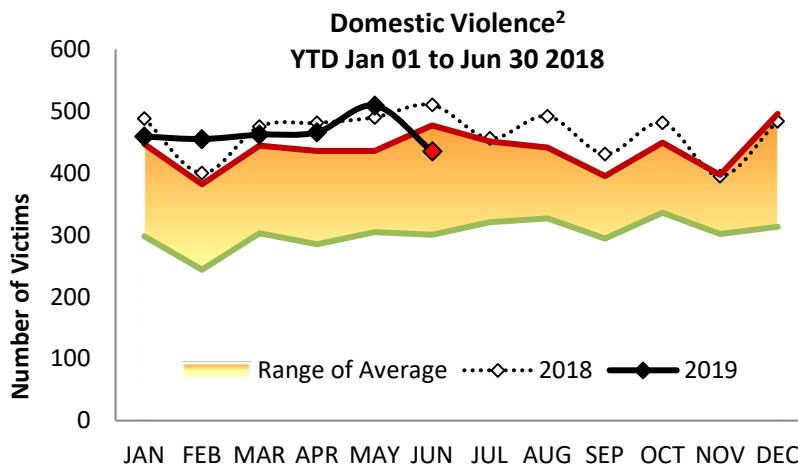


# Domestic Related Statistics

2nd QUARTER 2019

	2nd Quarter Number of Victims				Year to Date Number of Victims				
	2018	2019	5yr AVG (2014-2018)	% Change (5 Year)	2018	2019	5yr AVG (2014-2018)	% Change (5 Year)	% Cleared 2019
<b>PERSON CRIMES*</b>									
Homicide <sup>1</sup>	1	3	1.4	114.3%	2	3	2.4	25.0%	100.0%
Other Offences Causing Death	0	0	0.0	0.0%	0	0	0	0.0%	-
Attempted Homicide	1	1	0.8	25.0%	1	2	0.8	150.0%	50.0%
Sex Offences	106	82	68.0	20.6%	218	193	137.8	40.1%	29.0%
<b>Assault</b>									
Level 3 - Aggravated	7	15	4.8	212.5%	10	20	9.6	108.3%	100.0%
Level 2 - Weapon/Bodily Harm	238	198	151.0	31.1%	421	438	291.6	50.2%	66.0%
Level 1 - Common Assault	960	926	745.2	24.3%	1862	1744	1444.4	20.7%	47.5%
Assault Police Officer	6	5	4.8	4.2%	10	16	7.8	105.1%	38.9%
Discharge Firearm with Intent	1	0	0.2	-100.0%	1	0	0.2	-100.0%	-
Other Assaults	1	1	4.2	-76.2%	1	4	5.2	-23.1%	25.0%
<b>Total Assault</b>	<b>1213</b>	<b>1145</b>	<b>910.2</b>	<b>25.8%</b>	<b>2305</b>	<b>2222</b>	<b>1758.8</b>	<b>26.3%</b>	<b>51.9%</b>
Miscellaneous Person Crime	161	180	139.0	29.5%	320	366	278.4	31.5%	57.4%
<b>TOTAL PERSON CRIMES</b>	<b>1481</b>	<b>1410</b>	<b>1118.8</b>	<b>26.0%</b>	<b>2844</b>	<b>2786</b>	<b>2177.4</b>	<b>28.0%</b>	<b>51.1%</b>

Source: Sentry, July 2019



	2nd Quarter Number of Reports				Year to Date Number of Reports				
	2018	2019	5yr AVG (2014-2018)	% Change (5 Year)	2018	2019	5yr AVG (2014-2018)	% Change (5 Year)	% Cleared 2019
<b>DOMESTIC REPORTING</b>									
Domestic Information	3541	3265	3287.2	-0.7%	6844	6382	6373.6	0.1%	0
Domestic Standby	288	211	254.8	-17.2%	525	427	483.6	-11.7%	0
<b>TOTAL INFORMATIONS</b>	<b>3829</b>	<b>3476</b>	<b>3542</b>	<b>-1.9%</b>	<b>7369</b>	<b>6809</b>	<b>6857.2</b>	<b>-0.7%</b>	<b>N/A</b>

Source: Sentry, July 2019

<sup>1</sup>Due to the dynamic nature of homicide investigations these numbers may have been updated manually to reflect the current homicide count. Due to manual updating, it's possible that 1 or more homicides may be reflected in the assault category. Homicide counts are provided by the homicide unit. <sup>2</sup>The range of average is calculated as 1 standard deviation above and 1 below the calculated average for the previous five year period.





# Youth Related Statistics

2nd QUARTER 2019

	2nd Quarter Number of Offenders				Year to Date Number of Offenders			
	2018	2019	5yr AVG (2014-2018)	% Change (5 Year)	2018	2019	5yr AVG (2014-2018)	% Change (5 Year)
<b>YOUTH OFFENDERS</b>								
<b>PERSON CRIMES</b>								
Homicide	0	0	0.6	-100.0%	0	0	1.0	-100.0%
Other Offences Causing Death	0	0	0.0	n/a	0	0	0.0	n/a
Attempted Homicide	1	0	0.2	-100.0%	1	0	0.2	-100.0%
Sex Offences	30	14	21.4	-34.6%	53	33	36.6	-9.8%
Robbery	28	36	18.6	93.5%	59	88	38.8	126.8%
Assault	156	174	107.2	62.3%	256	308	212.2	45.1%
Miscellaneous Person Crime	22	24	16.0	50.0%	45	50	32.6	53.4%
<b>TOTAL YOUTH PERSON CRIMES</b>	<b>237</b>	<b>248</b>	<b>164.0</b>	<b>51.2%</b>	<b>414</b>	<b>479</b>	<b>321.4</b>	<b>49.0%</b>
<b>PROPERTY CRIMES</b>								
Break and Enter	11	18	21.2	-15.1%	21	23	35.6	-35.4%
Theft	166	142	204.6	-30.6%	311	329	383.2	-14.1%
Fraud	6	3	7.2	-58.3%	12	22	13.6	61.8%
Other Property Crimes	26	23	37.8	-39.2%	53	37	66.4	-44.3%
<b>TOTAL YOUTH PROPERTY CRIMES</b>	<b>209</b>	<b>186</b>	<b>270.8</b>	<b>-31.3%</b>	<b>397</b>	<b>411</b>	<b>498.8</b>	<b>-17.6%</b>
<b>OTHER CRIMES</b>								
Other Criminal Code Violations	40	49	64.0	-23.4%	85	125	129.0	-3.1%
Criminal Code Traffic Violations	1	0	1.4	-100.0%	2	3	3.8	-21.1%
Drugs	21	5	29.8	-83.2%	45	8	61.6	-87.0%
Other Statutes	10	13	25.0	-48.0%	30	21	48.8	-57.0%
<b>TOTAL YOUTH OTHER CRIMES</b>	<b>72</b>	<b>67</b>	<b>120.2</b>	<b>-44.3%</b>	<b>162</b>	<b>157</b>	<b>243.2</b>	<b>-35.4%</b>
<b>TOTAL YOUTH CRIMES</b>	<b>518</b>	<b>501</b>	<b>555.0</b>	<b>-9.7%</b>	<b>973</b>	<b>1047</b>	<b>1063.4</b>	<b>-1.5%</b>

Source: Sentry, July 2019

Unit of count: most serious violation per accused. Calculations are based on offences cleared. Youth offenders are between the ages of 12 and 17 years.

	2ndQuarter Number of Incidents				Year to Date Number of Incidents			
	2018	2019	5yr AVG (2014-2018)	% Change (5 Year)	2018	2019	5yr AVG (2014-2018)	% Change (5 Year)
<b>YOUTH VICTIMS</b>								
<b>PERSON CRIMES</b>								
Homicide	0	1	0.2	400.0%	0	1	0.6	66.7%
Other Offences Causing Death	0	0	0.0	n/a	0	0	0.0	n/a
Attempted Homicide	0	1	0.2	400.0%	0	1	0.6	66.7%
Sex Offences	165	129	131.8	-2.1%	346	281	256.4	9.6%
Robbery	77	64	48.2	32.8%	114	121	79.8	51.6%
Assault	273	324	201.6	60.7%	517	541	381.6	41.8%
Miscellaneous Person Crime	56	56	58.8	-4.8%	128	134	113.6	18.0%
<b>TOTAL YOUTH PERSON VICTIMS</b>	<b>571</b>	<b>575</b>	<b>440.8</b>	<b>30.4%</b>	<b>1105</b>	<b>1079</b>	<b>832.6</b>	<b>29.6%</b>

Source: Sentry, July 2019

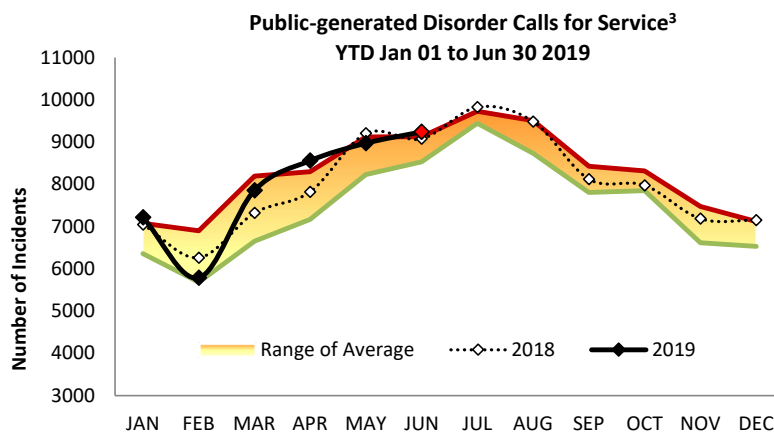
Unit of count: most serious violation per victim. Youth victims are victims aged 0 to 17 years.



# Calgary Disorder Statistics

2nd Quarter 2019

	2nd Quarter				Year to Date			
	Number of Events				Number of Events			
	2018	2019	5 yr AVG (2014-2018)	% Change (5 Year)	2018	2019	5 yr AVG (2014-2018)	% Change (5 Year)
<b>SOCIAL DISORDER</b>								
<b>Social Disorder</b>								
Disturbance	3230	3261	3061	6.5%	5675	5691	5437	4.7%
Drugs	790	639	727	-12.1%	1344	1130	1257	-10.1%
Indecent Act	182	204	191	6.9%	291	291	303	-4.0%
Intoxicated Persons	827	661	1137	-41.9%	1475	1148	2057	-44.2%
Landlord Tenant	758	672	733	-8.3%	1462	1308	1402	-6.7%
Mental Health Concern <sup>1</sup>	1000	1073	904	18.7%	2008	2013	1801	11.8%
Neighbour Dispute	769	757	674	12.3%	1268	1221	1107	10.3%
Noise Complaint	1204	1018	1331	-23.5%	1988	1723	2215	-22.2%
Party Complaint	557	391	576	-32.1%	740	577	810	-28.8%
Possible Gunshots	205	216	198	9.2%	293	330	311	6.0%
Prostitution	18	11	55	-79.9%	42	28	92	-69.4%
Speeder	181	197	230	-14.5%	244	272	345	-21.2%
Suspicious Person	6452	7276	6060	20.1%	10678	12035	10350	16.3%
Suspicious Vehicle	2984	2783	2853	-2.4%	5440	5092	5259	-3.2%
Threats	447	466	640	-27.1%	854	865	1264	-31.6%
Unwanted Guest	4689	5204	3928	32.5%	9698	10419	8006	30.1%
<b>TOTAL SOCIAL DISORDER</b>	<b>24293</b>	<b>24829</b>	<b>23439</b>	<b>5.9%</b>	<b>43500</b>	<b>44143</b>	<b>42216</b>	<b>4.6%</b>
<b>Physical Disorder</b>								
Abandoned Auto	141	126	96	31.5%	364	259	238	8.6%
Fire	455	384	474	-19.0%	771	727	821	-11.4%
Property Damage <sup>2</sup>	1213	1435	1229	16.8%	2102	2505	2397	4.5%
<b>TOTAL PHYSICAL DISORDER</b>	<b>1809</b>	<b>1945</b>	<b>1798.2</b>	<b>8.2%</b>	<b>3237</b>	<b>3491</b>	<b>3457</b>	<b>1.0%</b>
<b>TOTAL DISORDER</b>	<b>26102</b>	<b>26774</b>	<b>25238</b>	<b>6.1%</b>	<b>46737</b>	<b>47634</b>	<b>45673</b>	<b>4.3%</b>



Dispatched, advised and callback calls are included.

<sup>1</sup>Calls for service included in the "mental health concern" component of social disorder are only those calls from the public which are specifically coded as a mental health concern or mental health warrant. It is important to recognize that any call police are asked to attend may involve some element of mental health concern, even though they are not coded as such. This applies particularly to calls about suicide, missing persons or check on welfare, which are not included in this data as they are not considered social disorder.

<sup>2</sup> The majority of Property Damage calls result in *Criminal Code* reports, which are counted under 'Other Property Crimes'. <sup>3</sup>The range of average is calculated as 1 standard deviation above and 1 below the calculated average for the previous five-year period.



# Calgary Calls for Service Statistics

2nd Quarter 2019

	2nd Quarter Number of Calls				Year to Date Number of Calls			
	2018	2019	5 yr AVG (2014-2018)	% Change (5 Year)	2018	2019	5 yr AVG (2014-2018)	% Change (5 Year)
<b>CALLS FOR SERVICE</b>								
<b>Public vs. Officer Generated</b>								
Public Generated	108,026	105,751	103,663	2.0%	207,682	200,840	197,452	1.7%
Officer Generated	40,737	36,787	35,027	5.0%	80,557	73,779	70,471	4.7%
Other	2,771	2,568	2,605	-1.4%	5,250	4,582	4,602	-0.4%
<b>TOTAL CALLS FOR SERVICE</b>	<b>151,534</b>	<b>145,106</b>	<b>141,295</b>	<b>2.7%</b>	<b>293,489</b>	<b>279,201</b>	<b>272,525</b>	<b>2.4%</b>
<b>Attended Calls for Service</b>								
Attended Calls for Service	85,259	86,809	82,010	5.9%	161,191	162,797	155,258	4.9%

## CALLS FOR SERVICE BY EVENT TYPE (POLIS CATEGORIES)<sup>1</sup>

	2nd Quarter	
	Number	% of Total
COMPLAINT / DISTURBANCE / BYLAW / OTHER	40,186	27.69%
TRAFFIC ENFORCEMENT	23,277	16.04%
PROPERTY RELATED	21,976	15.14%
TRAFFIC INCIDENTS AND OTHER NON-TRAFFIC ACCIDENTS	17,512	12.07%
EMERGENCY RESPONSE OR ASSISTANCE REQUIRED	15,147	10.44%
DOMESTIC INCIDENTS	5,185	3.57%
911	4,976	3.43%
VIOLENT OFFENCES AND CRIMES AGAINST THE PERSON	2,936	2.02%
BREAK AND ENTER	2,922	2.01%
WANTED / HIGH RISK PERSON / OFFENDER / ACCUSED	2,562	1.77%
DRUGS / ALCOHOL / GAMING / PROSTITUTION	1,908	1.31%
TARGETED POLICING	1,506	1.04%
MENTAL HEALTH RELATED	1,250	0.86%
MISSING PERSONS	1,120	0.77%
POLICE INFORMATION	985	0.68%
POLICE ADMIN MATTERS & RESPONSIBILITIES	911	0.63%
FIREARM RELATED COMPLAINTS (INCL. POSSIBLE GUN SHOTS)	288	0.20%
ROBBERY	239	0.16%
Not Specified	220	0.15%
<b>TOTAL</b>	<b>145,106</b>	<b>100.00%</b>
WEAPON RELATED CALLS FOR SERVICE <sup>2</sup>	1,723	1.19%

Includes OCR - Online Citizen Reports. OCR allow for reporting of low value property damage/theft (under \$5000, incl. shoplifting) and property lost/found. Not all OCR submitted are entered into the system.

<sup>1</sup> POLIS - Police Information and Statistics Committee

<sup>2</sup> Number of calls for service where weapons have been mentioned/observed by the caller but are not yet verified by police.

## Calgary Crime Statistics

### 2nd QUARTER 2019

PERSON CRIMES <sup>1</sup>	2nd Quarter			Year to Date			Accumulated to Date		
	Number of Victims			Number of Victims			Percentage Cleared		
	2017	2018	2019	2017	2018	2019	2017	2018	2019
<b>Homicide<sup>2</sup></b>									
1st Degree	3	2	5	4	3	6	75.0%	33.3%	33.3%
2nd Degree	3	1	4	6	2	6	83.3%	100.0%	83.3%
Manslaughter	1	2	0	2	2	0	50.0%	50.0%	-
Infanticide	0	0	0	0	0	0	-	-	-
<b>Total</b>	<b>8</b>	<b>5</b>	<b>9</b>	<b>12</b>	<b>7</b>	<b>12</b>	<b>75.0%</b>	<b>57.1%</b>	<b>58.3%</b>
<b>Other Offences Causing Death</b>									
Criminal Negligence	1	1	0	1	1	0	100.0%	100.0%	-
Other Offences Causing Death	0	0	0	0	0	0	-	-	-
<b>Total</b>	<b>1</b>	<b>1</b>	<b>0</b>	<b>1</b>	<b>1</b>	<b>0</b>	<b>100.0%</b>	<b>100.0%</b>	<b>-</b>
<b>Attempted Homicide</b>									
Attempted murder	2	3	3	4	7	6	25.0%	71.4%	50.0%
Conspiracy to Commit	0	0	0	0	0	0	-	-	-
<b>Total</b>	<b>2</b>	<b>3</b>	<b>3</b>	<b>4</b>	<b>7</b>	<b>6</b>	<b>25.0%</b>	<b>71.4%</b>	<b>50.0%</b>
<b>Sex Offences</b>									
Level 3, aggravated	3	1	1	3	1	1	66.7%	0.0%	0.0%
Level 2, weapon or bodily harm	9	14	8	15	19	16	20.0%	15.8%	18.8%
Level 1	233	301	228	466	573	451	30.3%	28.6%	21.3%
Other	70	43	57	118	91	129	32.2%	29.7%	35.7%
<b>Total</b>	<b>315</b>	<b>359</b>	<b>294</b>	<b>602</b>	<b>684</b>	<b>597</b>	<b>30.6%</b>	<b>28.4%</b>	<b>24.3%</b>
<b>Robbery<sup>3</sup></b>									
Financial	6	9	4	19	21	11	57.9%	42.9%	18.2%
Commercial	59	85	67	153	156	149	39.9%	34.0%	28.9%
Home Invasion	16	16	15	38	36	34	31.6%	22.2%	26.5%
Person	137	173	148	248	286	284	24.2%	25.5%	25.0%
Robbery of Firearm	0	0	1	0	0	1	-	-	100.0%
<b>Total</b>	<b>218</b>	<b>283</b>	<b>235</b>	<b>458</b>	<b>499</b>	<b>479</b>	<b>31.4%</b>	<b>28.7%</b>	<b>26.3%</b>
<b>Assault</b>									
Level 3 - Aggravated	28	21	32	45	31	53	68.9%	77.4%	83.0%
Level 2 - Weapon/Bodily Harm	578	699	639	1039	1237	1274	53.7%	53.9%	50.9%
Level 1 - Common Assault	1331	1604	1559	2541	3016	2941	55.1%	43.1%	49.7%
Assault Police Officer	74	85	74	129	149	151	32.2%	29.7%	35.7%
Discharge Firearm with Intent	9	4	19	11	7	31	45.5%	42.9%	16.1%
Other Assaults	21	30	25	31	44	52	77.4%	40.9%	73.1%
<b>Total</b>	<b>2041</b>	<b>2443</b>	<b>2348</b>	<b>3796</b>	<b>4484</b>	<b>4502</b>	<b>56.5%</b>	<b>48.0%</b>	<b>52.0%</b>
<b>Miscellaneous Person Crime</b>									
Kidnapping/Abduction	20	6	11	25	14	23	36.0%	28.6%	39.1%
Forcible Confinement	23	21	23	44	41	48	72.7%	80.5%	66.7%
Extortion	18	33	13	28	61	35	25.0%	18.0%	17.1%
Criminal Harassment	78	85	92	150	174	202	44.7%	47.7%	47.0%
Uttering Threats	214	255	281	463	499	547	44.3%	39.1%	41.9%
Threatening/Harassing Communicati	52	44	57	102	100	121	13.7%	6.0%	12.4%
Other Person Crime	4	10	5	19	19	16	52.6%	73.7%	62.5%
<b>Total</b>	<b>409</b>	<b>454</b>	<b>482</b>	<b>831</b>	<b>908</b>	<b>992</b>	<b>41.4%</b>	<b>38.1%</b>	<b>39.9%</b>
<b>TOTAL PERSON CRIMES</b>	<b>2994</b>	<b>3548</b>	<b>3371</b>	<b>5704</b>	<b>6590</b>	<b>6588</b>	<b>49.6%</b>	<b>43.2%</b>	<b>45.8%</b>

**Calgary Crime Statistics**

**2nd QUARTER 2019**

PROPERTY CRIMES	2nd Quarter Number of Incidents			Year to Date Number of Incidents			Accumulated to Date Percentage Cleared		
	2017	2018	2019	2017	2018	2019	2017	2018	2019
<b>Break and Enter</b>					(2014-				
Dwelling	583	612	564	1048	1221	1011	8.0%	7.9%	9.6%
Commercial	1195	1207	1418	2153	2335	2875	8.3%	10.0%	6.7%
Other B&E	583	598	582	948	944	1055	4.2%	3.8%	2.4%
Unlawfully in Residence	9	12	10	23	24	28	91.3%	75.0%	60.7%
B&E Firearms	14	7	13	23	12	23	0.0%	16.7%	4.3%
<b>Break and Enter Total</b>	<b>2384</b>	<b>2436</b>	<b>2587</b>	<b>4195</b>	<b>4536</b>	<b>4992</b>	<b>7.7%</b>	<b>8.5%</b>	<b>6.7%</b>
<b>Theft</b>									
Theft Over	159	208	212	289	380	484	6.2%	6.3%	6.2%
Theft Under	2102	1912	1610	3522	3352	2893	9.3%	8.0%	7.1%
From Vehicle Over	134	102	92	215	173	178	0.0%	1.2%	1.1%
From Vehicle Under	3757	3348	4158	6589	6139	7409	1.3%	1.3%	0.9%
Possession Stolen Property	287	280	274	546	557	569	91.2%	89.9%	78.9%
Shoplift Over	9	12	18	17	26	33	29.4%	7.7%	36.4%
Shoplift Under	1156	1518	1797	2416	2911	3434	51.6%	41.8%	41.4%
<b>Theft Total</b>	<b>7604</b>	<b>7380</b>	<b>8161</b>	<b>13594</b>	<b>13538</b>	<b>15000</b>	<b>16.0%</b>	<b>15.5%</b>	<b>14.6%</b>
<b>Vehicle Theft</b>									
Vehicle Theft	1734	1613	1594	3346	3461	3143	5.4%	5.3%	4.9%
<b>Vehicle Theft Total</b>	<b>1734</b>	<b>1613</b>	<b>1594</b>	<b>3346</b>	<b>3461</b>	<b>3143</b>	<b>5.4%</b>	<b>5.3%</b>	<b>4.9%</b>
<b>Fraud</b>									
False Pretences	24	43	26	71	74	56	16.9%	12.2%	8.9%
Forgery/Uttering	154	115	173	309	257	359	30.7%	36.6%	31.8%
Computer	8	14	16	18	27	31	5.6%	3.7%	3.2%
Identity Theft/Fraud/Personation	87	116	138	198	244	280	24.7%	27.0%	30.0%
Food/Lodging/Transportation	55	71	58	103	138	104	50.5%	47.8%	50.0%
Defraud Person	360	509	431	690	961	903	20.7%	18.1%	12.2%
Credit Card	561	494	520	977	921	1049	17.8%	18.1%	14.9%
Fraud - Other	7	61	56	15	100	81	33.3%	11.0%	28.4%
<b>Fraud Total</b>	<b>1256</b>	<b>1423</b>	<b>1418</b>	<b>2381</b>	<b>2722</b>	<b>2863</b>	<b>22.3%</b>	<b>21.6%</b>	<b>19.0%</b>
<b>Other Property Crimes</b>									
Arson	47	38	32	77	72	60	6.5%	15.3%	16.7%
Mischief	462	525	502	841	922	929	22.5%	26.0%	21.4%
Vehicle Damage	803	778	827	1419	1360	1472	6.1%	6.0%	4.4%
Altering/Removing VIN	2	0	2	2	1	4	0.0%	0.0%	0.0%
<b>Other Property Crimes Total</b>	<b>1314</b>	<b>1341</b>	<b>1363</b>	<b>2339</b>	<b>2355</b>	<b>2465</b>	<b>12.0%</b>	<b>14.1%</b>	<b>11.1%</b>
<b>TOTAL PROPERTY CRIMES</b>	<b>14292</b>	<b>14193</b>	<b>15123</b>	<b>25855</b>	<b>26612</b>	<b>28463</b>	<b>13.5%</b>	<b>13.5%</b>	<b>12.3%</b>

**Calgary Crime Statistics**

**2nd QUARTER 2019**

<b>OTHER CRIMINAL CODE</b>	<b>2nd Quarter Number of Incidents</b>			<b>Year to Date Number of Incidents</b>			<b>Accumulated to Date Percentage Cleared</b>		
	<b>2017</b>	<b>2018</b>	<b>2019</b>	<b>2017</b>	<b>2018</b>	<b>2019</b>	<b>2017</b>	<b>2018</b>	<b>2019</b>
<b>Vice</b>									
Impede/Communicate	0	15	0	0	17	0	-	100.0%	-
Live on Avails	0	2	0	1	6	0	100.0%	83.3%	-
Bawdy House	0	0	1	0	0	1	-	-	0.0%
Procure/Solicit	1	4	2	1	6	17	0.0%	83.3%	82.4%
<b>Vice Total</b>	<b>1</b>	<b>21</b>	<b>3</b>	<b>2</b>	<b>29</b>	<b>18</b>	<b>50.0%</b>	<b>93.1%</b>	<b>77.8%</b>
<b>Gaming</b>									
Betting/Gaming House	0	0	0	0	0	0	-	-	-
Other Gaming	0	0	0	0	0	0	-	-	-
<b>Gaming Total</b>	<b>0</b>	<b>0</b>	<b>0</b>	<b>0</b>	<b>0</b>	<b>0</b>			
<b>Weapon Related</b>									
Explosives	0	0	0	0	2	0	-	50.0%	-
Importation/Exportation	1	0	0	1	0	0	100.0%	-	-
Weapons Trafficking	1	1	3	1	2	4	100.0%	0.0%	100.0%
Possession Offences	88	106	132	168	177	266	94.6%	92.1%	94.7%
Weapons Administration Offences	1	0	1	1	0	1	100.0%	-	100.0%
Unsafe Storage	6	2	1	7	5	5	85.7%	60.0%	40.0%
<b>Weapon Related Total</b>	<b>97</b>	<b>109</b>	<b>137</b>	<b>178</b>	<b>186</b>	<b>276</b>	<b>94.4%</b>	<b>89.8%</b>	<b>93.8%</b>
<b>Miscellaneous CC Offences</b>									
Counterfeiting	143	147	100	258	312	185	8.1%	9.0%	4.3%
Obstruct Peace Officer	23	35	36	48	61	68	93.8%	96.7%	95.6%
Bail Violation/Fail to Attend	1112	2091	1462	1825	3985	3529	99.1%	99.2%	99.0%
Fail to Comply with Probation	67	84	115	132	157	219	97.0%	97.5%	97.7%
Escape Custody/UAL	39	76	56	85	123	115	98.8%	100.0%	97.4%
Attempt to commit/Accessory	1	0	0	1	1	0	100.0%	0.0%	-
Indecent Acts	36	40	39	58	62	55	31.0%	29.0%	29.1%
Miscellaneous Criminal Code	95	104	94	195	182	201	68.2%	69.2%	70.6%
<b>Miscellaneous CC Offences Total</b>	<b>1516</b>	<b>2577</b>	<b>1902</b>	<b>2602</b>	<b>4883</b>	<b>4372</b>	<b>86.0%</b>	<b>91.3%</b>	<b>92.7%</b>
<b>Other Criminal Code Violations Total</b>	<b>1614</b>	<b>2707</b>	<b>2042</b>	<b>2782</b>	<b>5098</b>	<b>4666</b>	<b>86.5%</b>	<b>91.3%</b>	<b>92.7%</b>

**Calgary Crime Statistics**

**2nd QUARTER 2019**

SELECTED OTHER	2nd Quarter Number of Incidents			Year to Date Number of Incidents			Accumulated to Date Percentage Cleared		
	2017	2018	2019	2017	2018	2019	2017	2018	2019
<b>Criminal Code Traffic</b>									
Impaired Causing Death	0	1	0	0	1	0	-	100.0%	-
Impaired Causing Harm	0	1	1	2	2	1	100.0%	50.0%	100.0%
Impaired > .08	31	35	27	73	71	48	100.0%	100.0%	97.9%
Impaired Driving	153	163	185	347	336	360	98.8%	96.7%	93.3%
Fail/Refuse	24	24	24	60	51	70	98.3%	100.0%	100.0%
Dangerous Operation Causing Death	0	0	0	0	0	1	-	-	0.0%
Dangerous Operation Causing Harm	3	2	1	6	6	5	83.3%	83.3%	80.0%
Dangerous Operation of Motor Vehicl	40	47	38	75	80	75	93.3%	96.3%	89.3%
Fail to Stop/Remain	0	0	0	0	0	0	-	-	-
Other CC Traffic	84	79	59	166	168	127	98.8%	98.8%	99.2%
<b>Criminal Code Traffic Total</b>	<b>341</b>	<b>370</b>	<b>356</b>	<b>751</b>	<b>743</b>	<b>726</b>	<b>96.7%</b>	<b>95.8%</b>	<b>92.4%</b>
<b>Drugs</b>									
Possession	218	253	188	412	485	367	96.1%	90.7%	93.7%
Possession for Purpose	53	72	62	108	121	124	98.1%	96.7%	90.3%
Trafficking	26	37	39	56	78	101	87.5%	87.2%	89.1%
Cultivation/Production	2	1	2	4	3	5	50.0%	66.7%	0.0%
Importation/Export	1	0	1	1	1	2	0.0%	0.0%	0.0%
<b>Drugs Total</b>	<b>300</b>	<b>363</b>	<b>292</b>	<b>581</b>	<b>688</b>	<b>600</b>	<b>95.2%</b>	<b>91.1%</b>	<b>91.2%</b>
<b>Selected Non-Criminal</b>									
Missing Person <sup>4</sup>	1026	1019	1026	1884	1818	1895	N/A	N/A	N/A
Domestic Information	2967	3541	3265	5767	6844	6382	N/A	N/A	N/A
Domestic Standby	228	288	211	479	525	427	N/A	N/A	N/A
<b>Selected Non-Criminal Total</b>	<b>4221</b>	<b>4848</b>	<b>4502</b>	<b>8130</b>	<b>9187</b>	<b>8704</b>	<b>N/A</b>	<b>N/A</b>	<b>N/A</b>

<sup>1</sup>Person crimes are counted at the victim level using the most serious violation against each victim in an incident. <sup>2</sup>Due to the dynamic nature of homicide investigations these numbers may have been updated manually to reflect the current homicide count. Due to manual updating, it's possible that 1 or more homicides may be reflected in the assault category. Homicide counts are provided by the homicide unit. <sup>3</sup>Robbery and all other crimes, as well as selected domestic non-criminal incidents, are counted at the incident level using the most serious offence in the incident. <sup>4</sup>Missing persons are counted by the number of missing individuals.