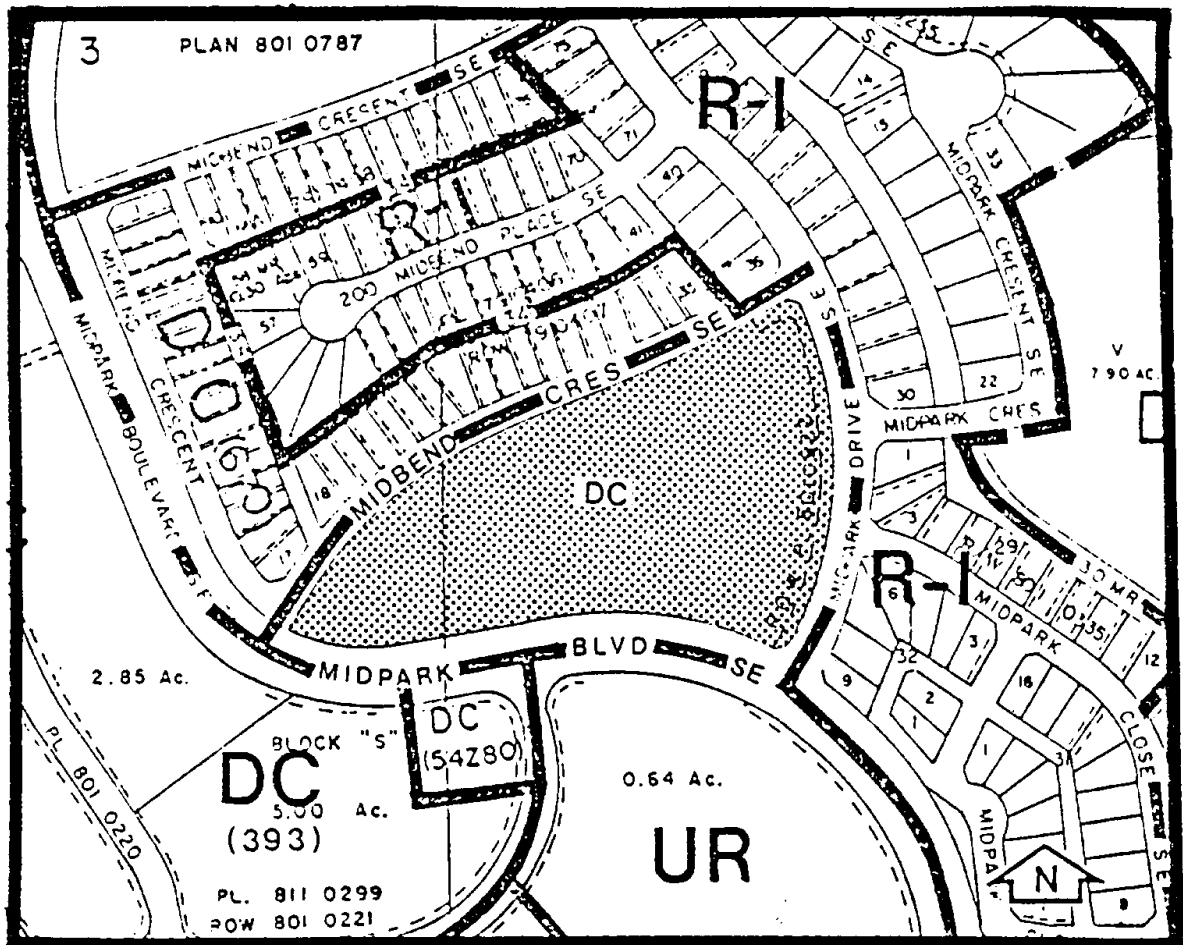


**Amendment No. 81/111**  
**Bylaw No. 152Z81**  
**Council Approval: 08 September 1981**

**SCHEDULE B**



1. Land Use

The land uses shall be those contained within the RM-4 (Residential Medium Density Multi-Dwelling District) of the Land Use By-law 2P80 only.

2. Development Guidelines

The General Rules for Residential Districts contained in Section 20 of By-law 2P80 and the Permitted Use Rules and the Discretionary Use Rules of the RM-4 (Residential Medium Density Multi-Dwelling District) shall apply unless otherwise noted below.

Density

A maximum of 54 units per hectare (22 units per acre).