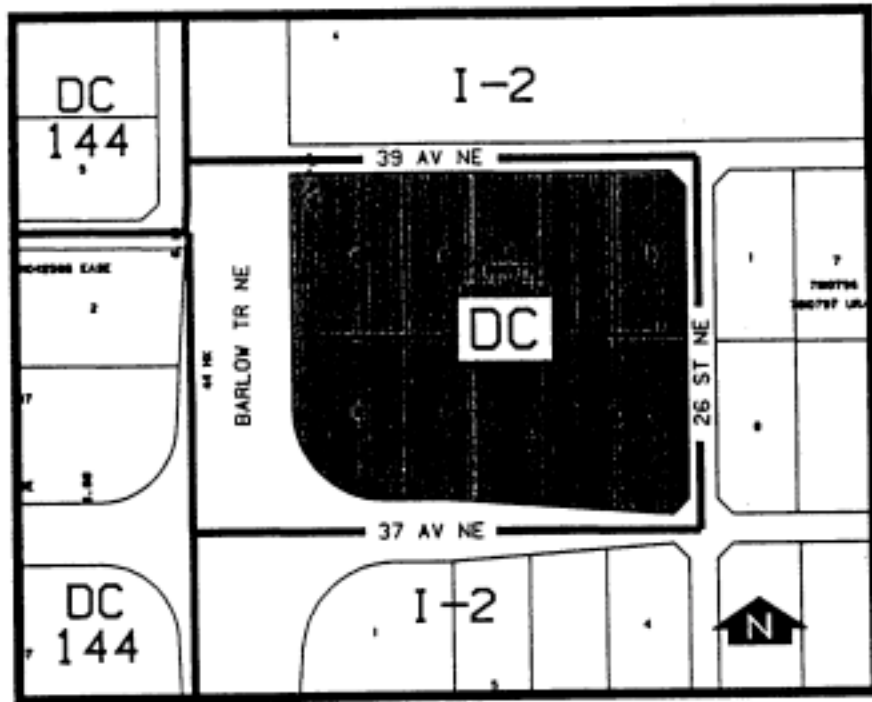


Amendment No. 94/013
Bylaw No. 64Z94
Council Approval: 20 June 1994

SCHEDULE B



1. Land Use

The permitted use shall be a private school. The discretionary uses shall be the permitted and discretionary uses of the I-2 General Light Industrial District with the deletion of "business and commercial establishments".

2. Development Standards

The General Rules for Industrial Districts contained in Section 43 of By-law 2P80 and the Permitted and Discretionary Use Rules of the I-2 General Light Industrial District shall apply unless otherwise noted below.

a) Private School

- i) A private school may only be allowed within the building existing on the site on the date of passage of this by-law.
- ii) The maximum student enrolment shall be 300.

