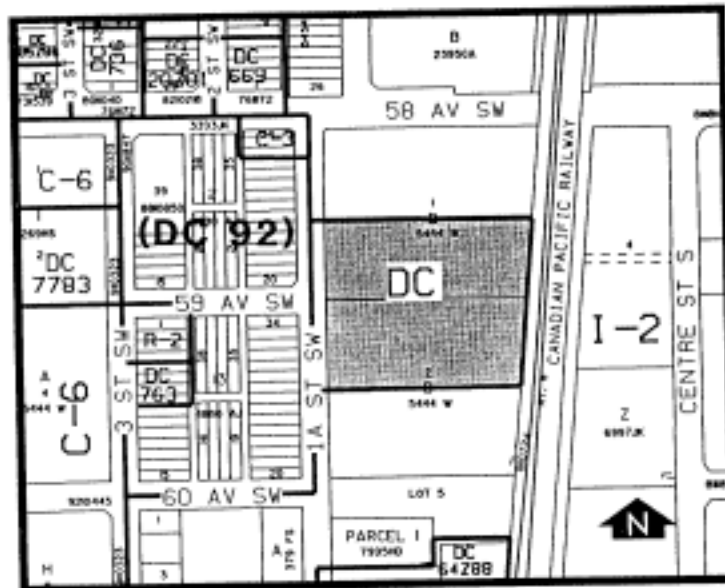


Amendment No. 95/056
Bylaw No. 95Z95
Council Approval: 13 November 1995

SCHEDULE B



1. Land Use

The permitted and discretionary uses of the I-2 General Light Industrial District of Bylaw 2P80 shall be the permitted and discretionary uses respectively with the addition of the following discretionary uses which may be accommodated only within the building existing on the site on the date of passage of this bylaw:

- medical clinics;
- medical laboratories;
- personal services; and
- retail stores.

2. Development Guidelines

The general rules of the industrial districts contained in Section 43 of Bylaw 2P80 and the permitted and discretionary use rules of the I-2 General Light Industrial District shall apply unless otherwise noted below:

a. Retail Component

A maximum of 20 percent of the gross floor area of the building may be used for retail purposes.

b. Development Plans

Approval of this application does not constitute approval of a development permit. Any additional development or change of use to a discretionary use shall require a development permit approval by the approving authority.