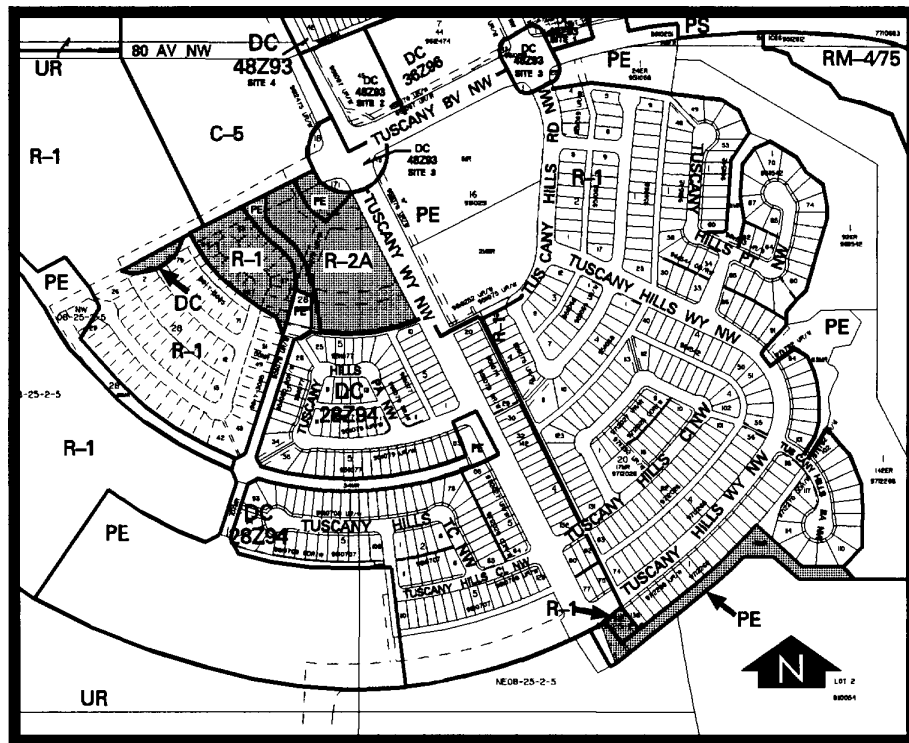


Amendment No. 97/083
Bylaw No. 128Z97
Council Approval: 15 December 1997

SCHEDULE B



DC Direct Control District

(1) Land Use

The land use shall be for an entrance feature park and related signage.

(2) Development Guidelines

(a) Park Design

The park shall be designed, landscaped and signed to the satisfaction of the Development Authority.

(b) Development Plans

**Amendment No. 97/083
Bylaw No. 128Z97**

SCHEDULE B

CONTINUED

The approval of this application does not constitute approval of a development permit. Comprehensive plans shall subsequently be submitted for the park as part of a development permit application.