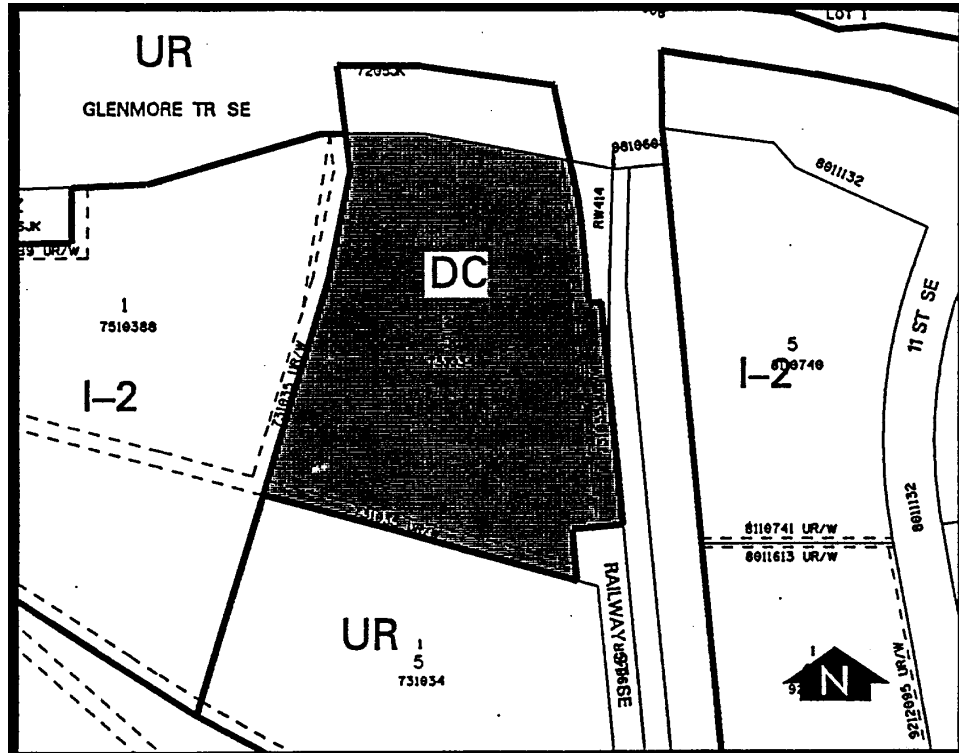


Amendment No. 98/067
Bylaw No. 115Z98
Council Approval: 05 October 1998

SCHEDULE B



(1) Land Use

The permitted and discretionary uses of the I-2 General Light Industrial District shall be discretionary uses.

(2) Development Guidelines

The General Rules for Industrial districts contained in Section 43 of Bylaw 2P80 and the Permitted and Discretionary Use Rules of the I-2 General Light Industrial District shall apply unless otherwise noted below:

(a) Setback from Sanitary Landfill

A school, custodial quarters or food establishment as defined in the Subdivision and Development Regulation shall not be allowed on this site within 300 metres of the former Blackfoot Sanitary Landfill.

(b) Development Plans

Approval of this application does not constitute approval of a development permit. Comprehensive plans shall subsequently be submitted to the satisfaction of the Development Authority as part of a development permit application.