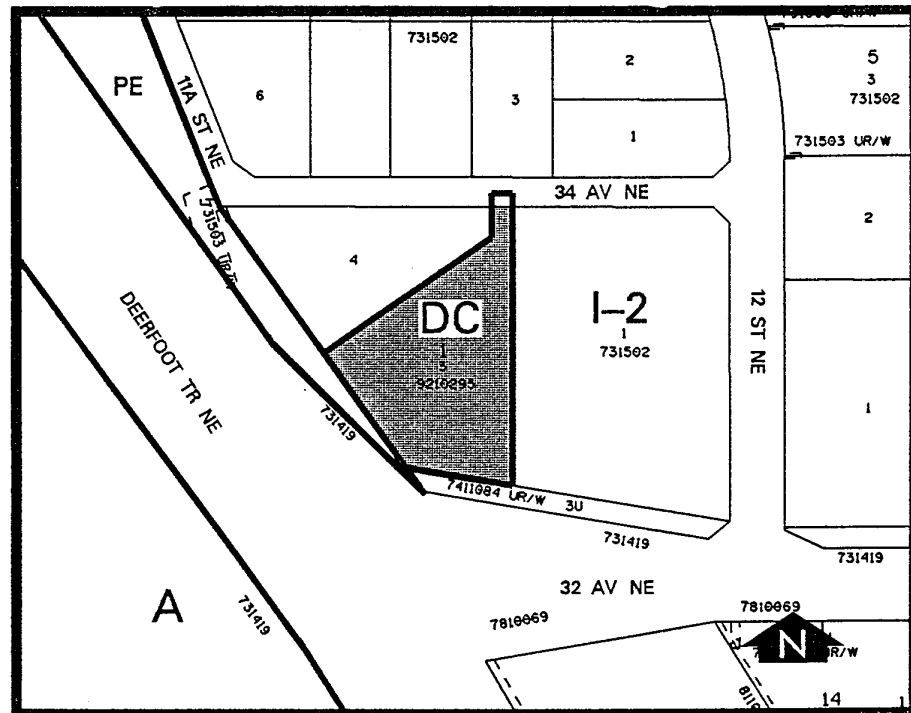


Amendment No. 2000/103
Bylaw No. 138Z2000
Council Approval: 04 December 2000

SCHEDULE B



1. Land Use

The Permitted and Discretionary Uses of the I-2 General Light Industrial District of Bylaw 2P80 shall be the Permitted and Discretionary Uses respectively with the additional Discretionary Use of a special care facility.

2. Development Guidelines

The General Rules for Industrial District contained in Section 43 of Bylaw 2P80 and the Permitted and Discretionary Use Rules of the I-2 General Light Industrial District shall apply unless otherwise noted below:

(a) Development Plans

Approval of this application does not constitute approval of a development permit. Comprehensive plans shall be submitted to the Development Authority as part of a development permit application.