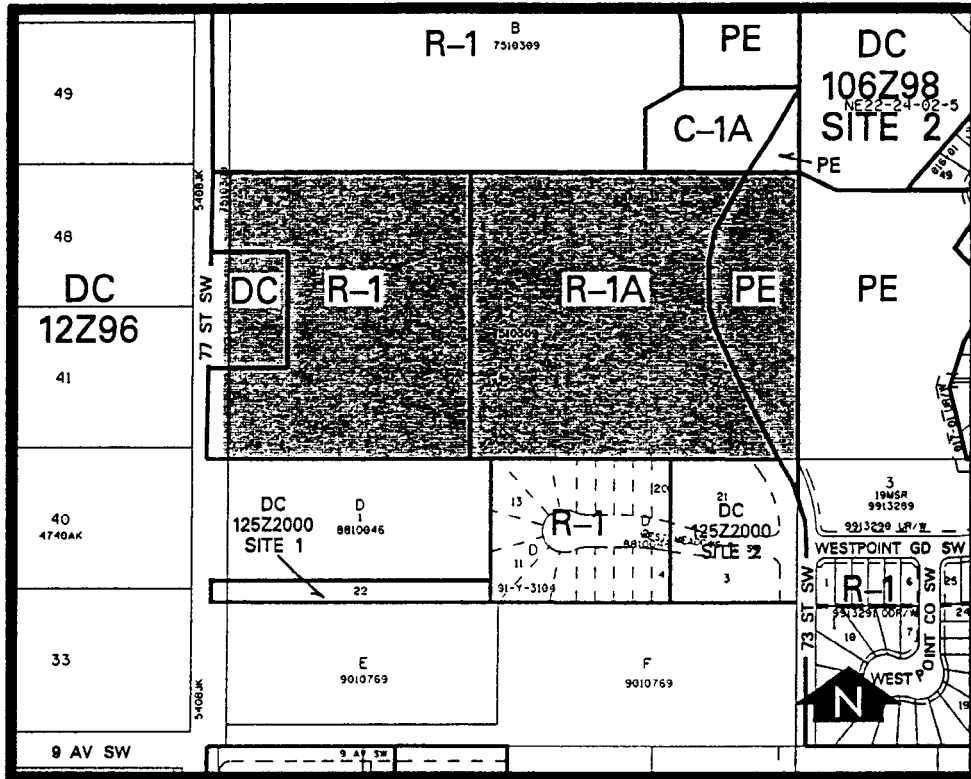


Amendment # 2000/114
Bylaw # 43Z2001
Council Approval: 2001 June 25

SCHEDULE B



DC DIRECT CONTROL DISTRICT

1. Land Use

The Permitted and Discretionary Uses of the R-1 Residential Single-Detached District of Bylaw 2P80 shall be the Permitted and Discretionary Uses respectively.

2. Development Guidelines

The General Rules for Residential Districts contained in Section 20 of Bylaw 2P80 and the Permitted and Discretionary Use Rules of the R-1 Residential Single-Detached District shall apply unless otherwise noted below:

a. Density

The maximum number of lots shall be 5.

b. Rear Yard on 77 Street SW

A minimum depth of 12 metres for Lots 33-37.