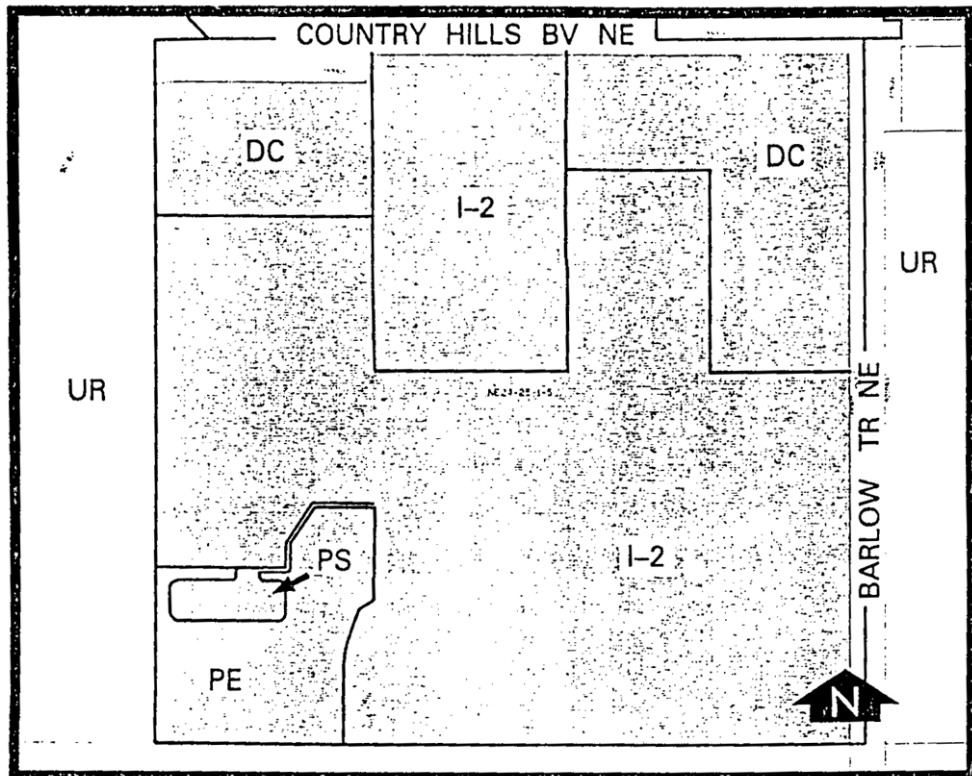


Amendment # 2000/099
Bylaw # 57Z2001
Council Approved: 2001 September 10

SCHEDULE B



DC DIRECT CONTROL DISTRICT

1. Land Use

The Permitted and Discretionary Uses of the I-2 General Light Industrial District of Bylaw 2P80 shall be the Permitted and Discretionary Uses respectively.

Amendment # 2000/099 Bylaw # 57Z2001

SCHEDULE B

CONTINUED

2. Development Guidelines

The General Rules for Industrial Districts contained in Section 43 of Bylaw 2P80 and the Permitted and Discretionary Use Rules of the I-2 General Light Industrial District shall apply unless otherwise noted below:

(a) Building Height

A maximum of 12 metres, except a maximum of 20 metres for office buildings.