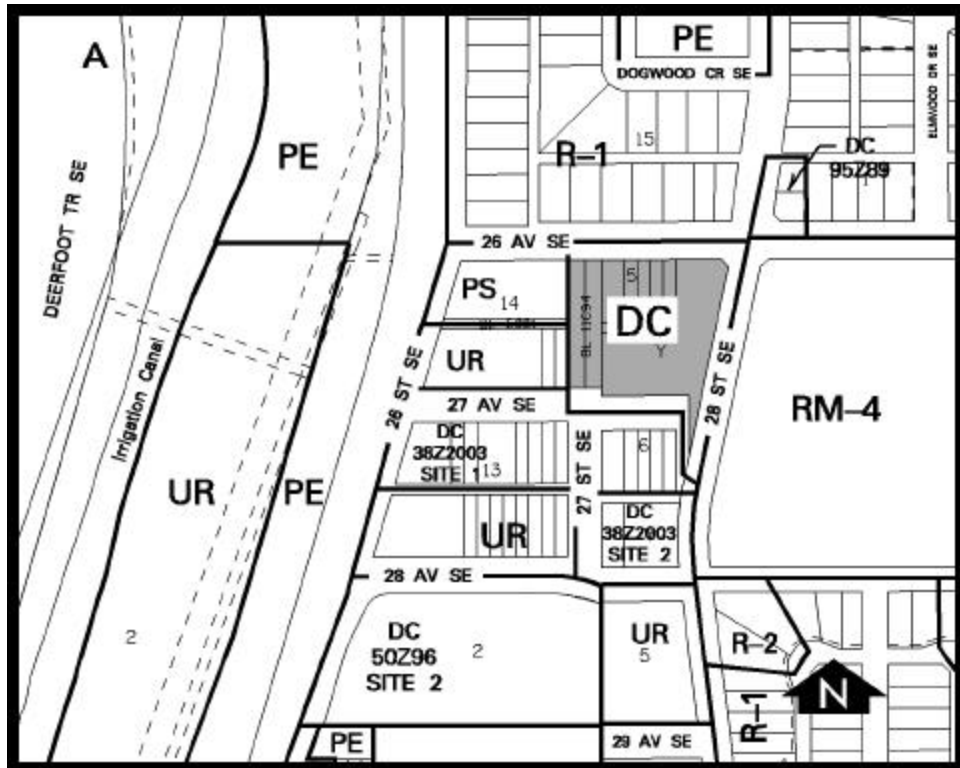


Amendment # LOC2002-0091
Bylaw # 64Z2003
Council Approval: 2003 July 21

SCHEDULE B



DC DIRECT CONTROL DISTRICT

1. Land Use

The Permitted and Discretionary Uses of the RM-1 Residential Low Density Multi-Dwelling District of Bylaw 2P80 shall be the Permitted and Discretionary Uses respectively, with the additional Discretionary Use of assisted living accommodation.

For the purpose of this bylaw, “assisted living accommodation” means dwelling units modified in terms of kitchen and living space as a result of provision of such facilities and services as communal dining, social/recreational activities and housekeeping within the complex.

2. Development Guidelines

The General Rules for Residential Districts contained in Section 20 of Bylaw 2P80 and the Permitted and Discretionary Use Rules of the RM-1 Residential Low Density Multi-Dwelling District shall apply unless otherwise noted below:

(a) Building Height

- (i) A maximum of 3 storeys not exceeding an overall height of 10 metres except the east elevation which shall not exceed an overall height of 12 metres.
- (ii) Notwithstanding 2(a)(i) the maximum building height may be exceeded only by:
 - (A) ancillary structures, and
 - (B) a religious symbol including, but not limited to, a cross or steeple.

(b) Parking

Parking for assisted living accommodation shall be a minimum of 1 stall per 3 units.