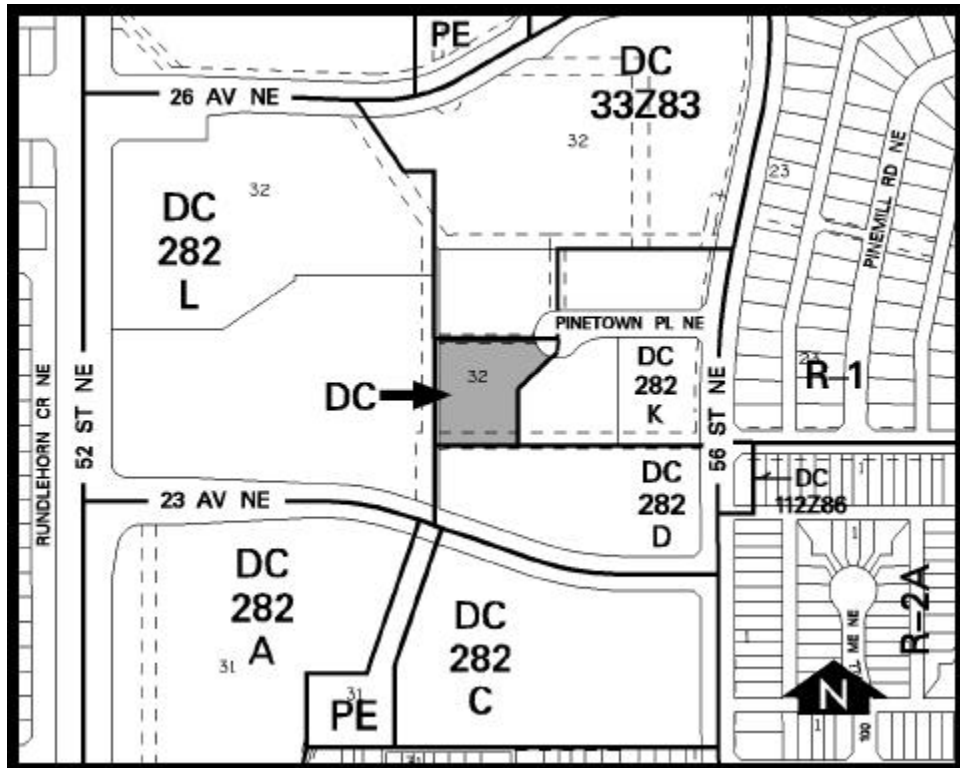


Amendment # LOC2003-0081
Bylaw # 86Z2003
Council Approval: 2003 September 15

SCHEDULE B



DC DIRECT CONTROL DISTRICT

1. Land Uses

The land uses shall be a church and private school as a Permitted Use within the building existing on the site on the date of passage of this bylaw.

2. Development Guidelines

Private School

- (a) A maximum of 40 students; and
- (b) The private school may provide for Kindergarten to Grade Two.