

BYLAW NUMBER 123D2009

**BEING A BYLAW OF THE CITY OF CALGARY
TO AMEND THE LAND USE BYLAW 1P2007
(LAND USE AMENDMENT LOC2009-0022)**

WHEREAS it is desirable to amend the Land Use Bylaw Number 1P2007 to change the land use designation of certain lands within the City of Calgary;

AND WHEREAS Council has held a public hearing as required by Section 692 of the Municipal Government Act, R.S.A. 2000, c.M-26 as amended;

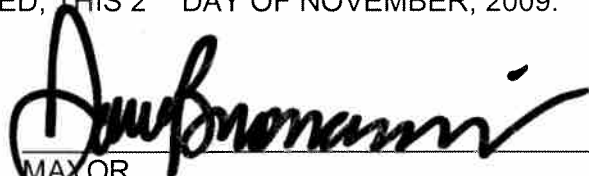
NOW, THEREFORE, THE COUNCIL OF THE CITY OF CALGARY ENACTS AS FOLLOWS:

1. The Land Use Bylaw, being Bylaw 1P2007 of the City of Calgary, is hereby amended by deleting that portion of the Land Use District Map shown as shaded on Schedule "A" to this Bylaw and substituting therefor that portion of the Land Use District Map shown as shaded on Schedule "B" to this Bylaw, including any land use designation, or specific land uses and development guidelines contained in the said Schedule "B".
2. This Bylaw comes into force on the date it is passed.


READ A FIRST TIME THIS 2ND DAY OF NOVEMBER, 2009.

READ A SECOND TIME, AS AMENDED, THIS 2ND DAY OF NOVEMBER, 2009.

READ A THIRD TIME, AS AMENDED, THIS 2ND DAY OF NOVEMBER, 2009.



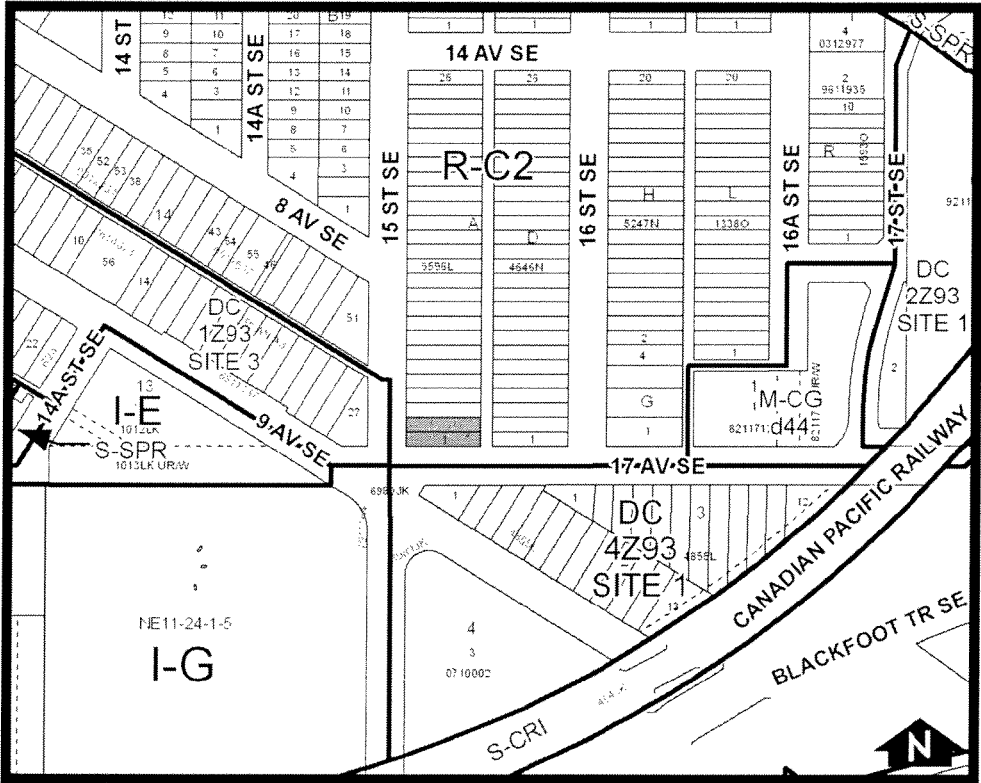
MAYOR
SIGNED THIS 5TH DAY OF NOVEMBER, 2009.



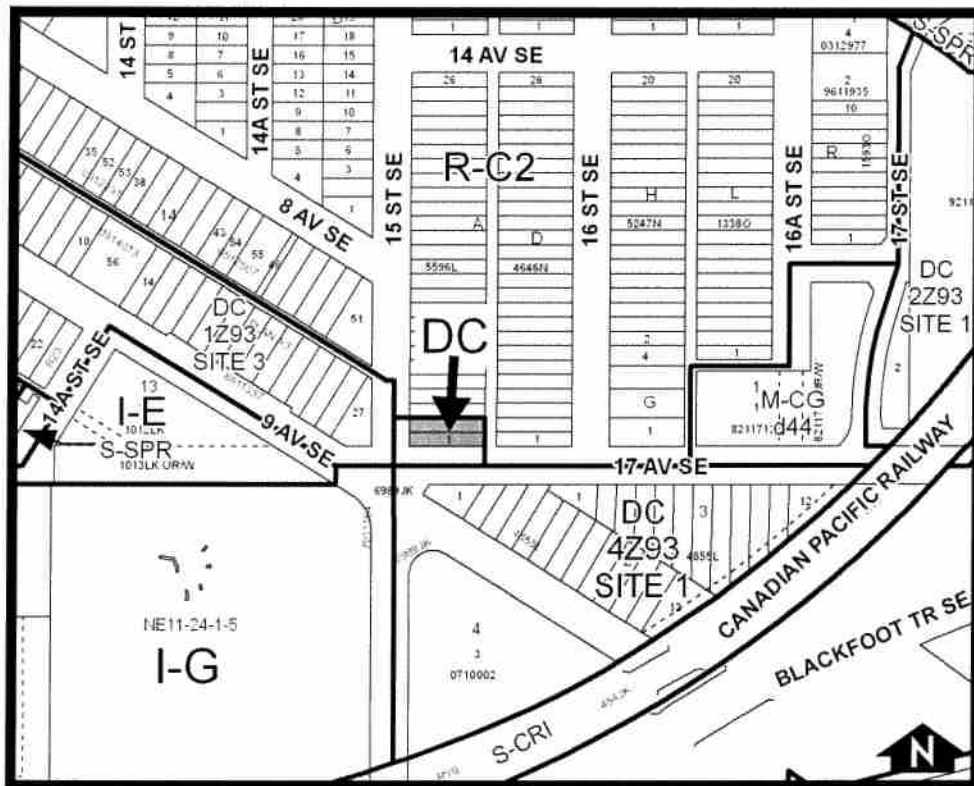
ACTING CITY CLERK
SIGNED THIS 5TH DAY OF NOVEMBER, 2009.

AMENDMENT LOC2009-0022
BYLAW NUMBER 123D2009

SCHEDULE A



SCHEDULE B



DC DIRECT CONTROL DISTRICT

Purpose

1 This Direct Control District is intended to be characterized by:

- (a) commercial developments **also** containing one or more **Dwelling Units**.

**AMENDMENT LOC2009-0022
BYLAW NUMBER 123D2009**

Compliance with Bylaw 1P2007

- 2 Unless otherwise specified, the rules and provisions of Parts 1, 2, 3 and 4 of Bylaw 1P2007 apply to this Direct Control District.

Reference to Bylaw 1P2007

- 3 Within this Direct Control District, a reference to a section of Bylaw 1P2007 is deemed to be a reference to the section as amended from time to time.

Permitted Uses

- 4 The *permitted uses* of the Commercial Neighbourhood 1 (C-N1) District of Bylaw 1P2007 are the *permitted uses* in this Direct Control District.

Discretionary Uses

- 5 The *discretionary uses* of the Commercial Neighbourhood 1 (C-N1) District of Bylaw 1P2007 are the *discretionary uses* in this Direct Control District.

Bylaw 1P2007 District Rules

- 6 Unless otherwise specified, the rules of the Commercial Neighbourhood 1 (C-N1) District of Bylaw 1P2007 apply in this Direct Control District.

Residential Use Requirement

- 7 Every *building* on a *parcel* must contain at least one **Dwelling Unit**.