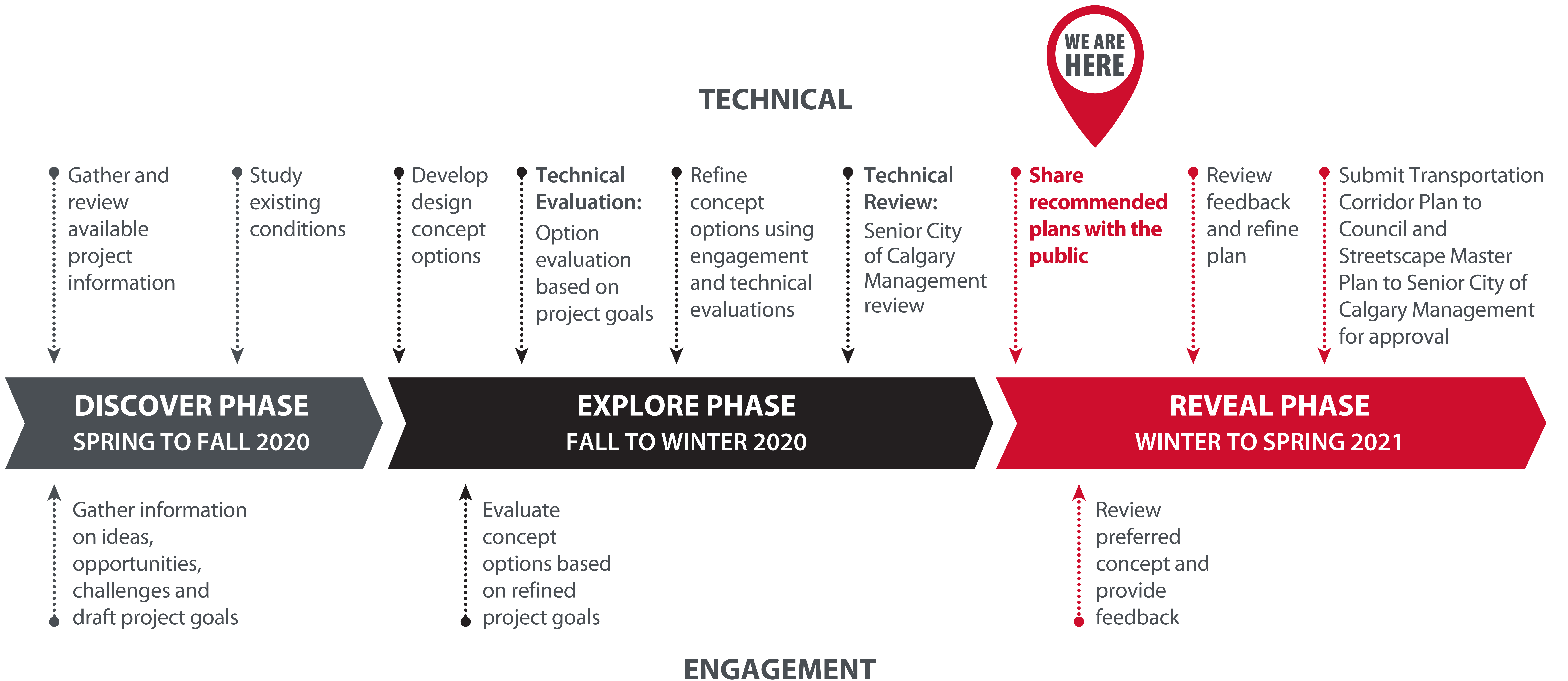


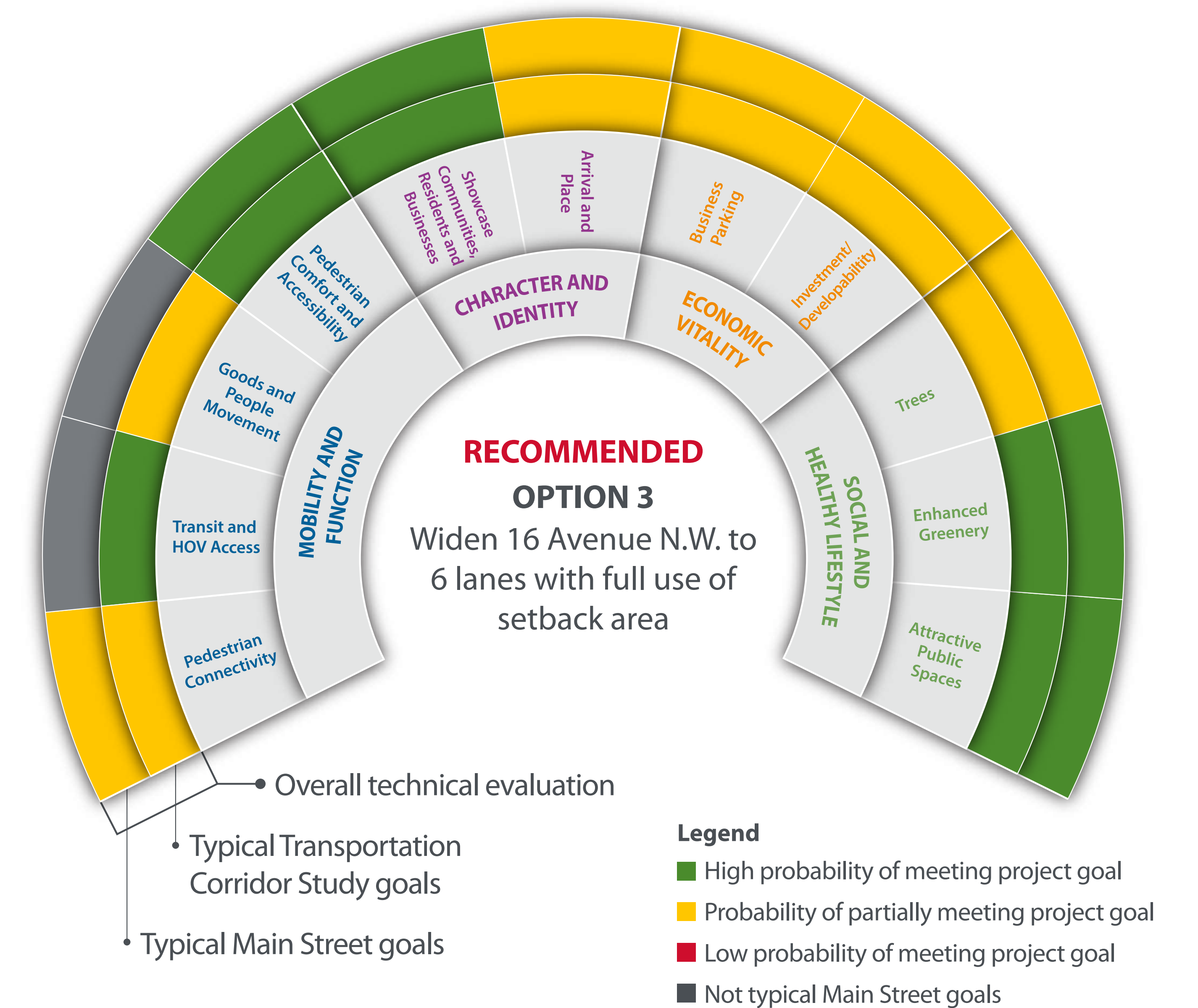
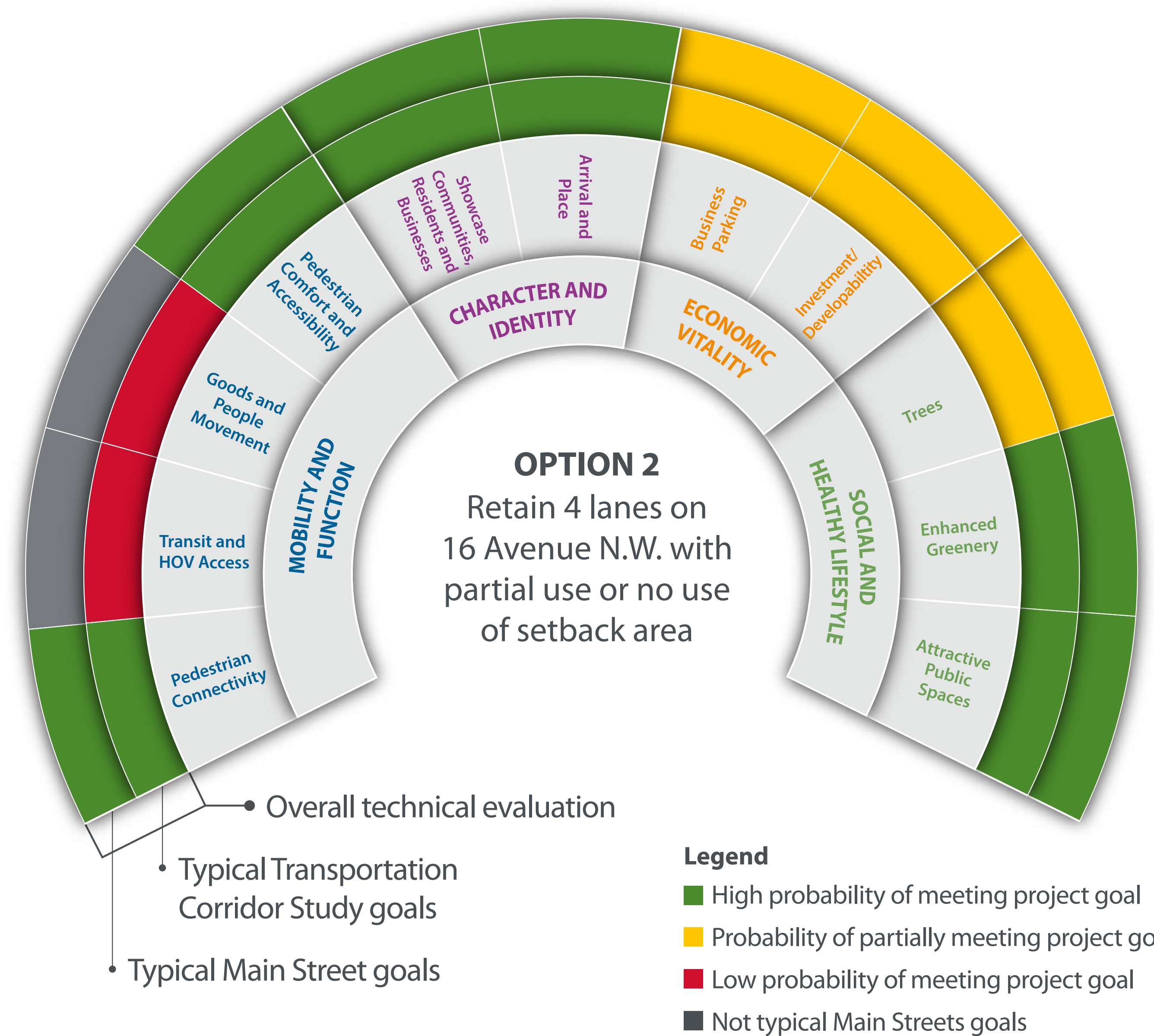
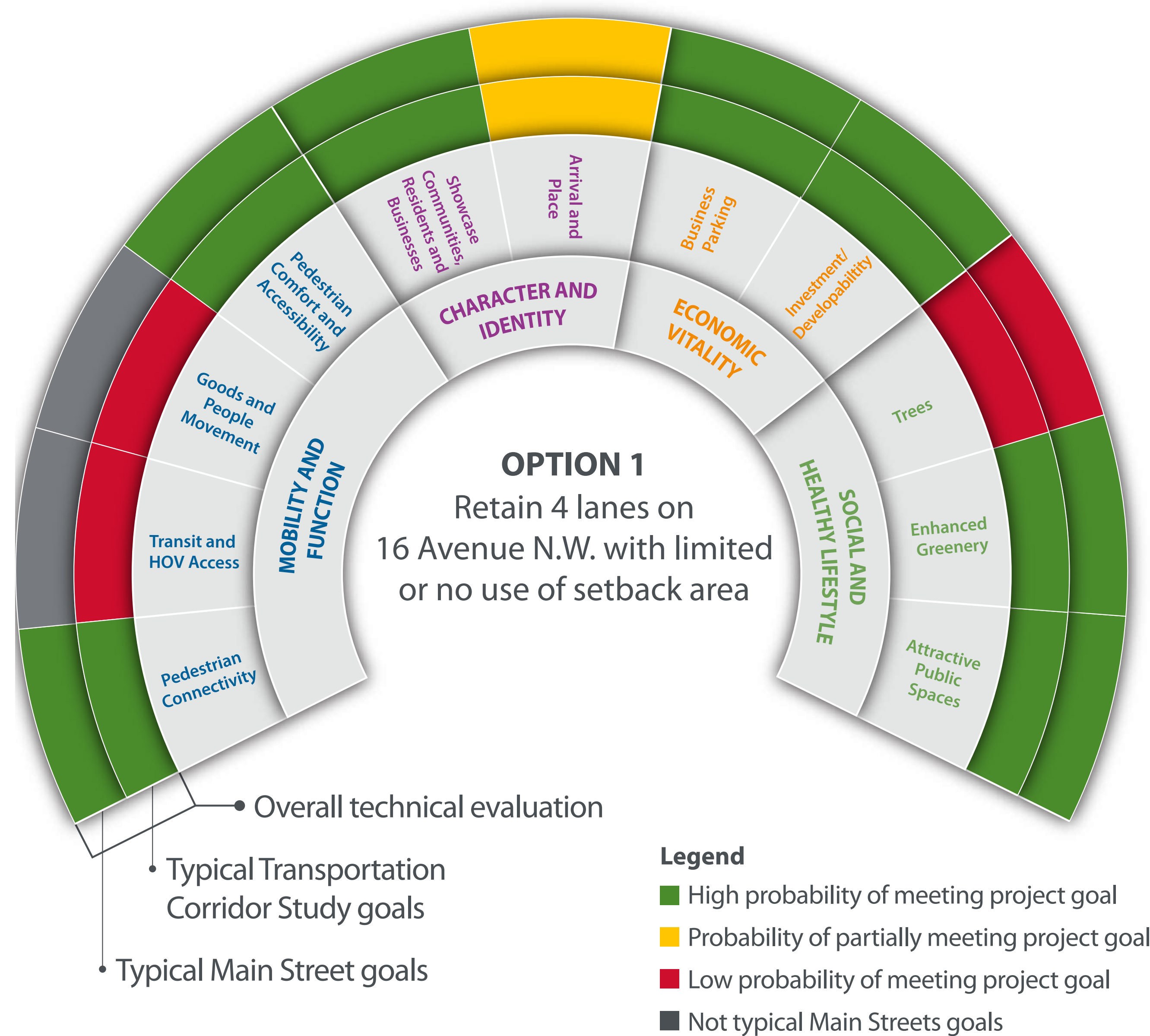


Concept Selection: Process



Concept Selection: Technical Evaluation

Main street segment evaluation



Evaluation notes

- Based on the overall evaluation, the project team has recommended Option 3 as the basis for the long-term plan for 16 Avenue N.W. Refinements were made to the plan based on public feedback in Phase 2: Explore and the continued technical advancement of the plan. These refinements are highlighted on the recommended plan.

- While Transit, high occupancy vehicle (HOV) lanes, and goods movement are not typically included as goals for a Main Street - their inclusion in the evaluation here is reflective of the key role 16 Avenue N.W. plays both in the city-wide network and in providing a differing but complementary function to the Bowness Road Main Street in Montgomery.

- Evaluation of the East and West Segments largely focused on creating continuity with the Main Street Segment, improving pathway comfort and connectivity to communities, the hospital and the river valley pathway system. The refinements and features of these segments are highlighted on the recommended plan.