

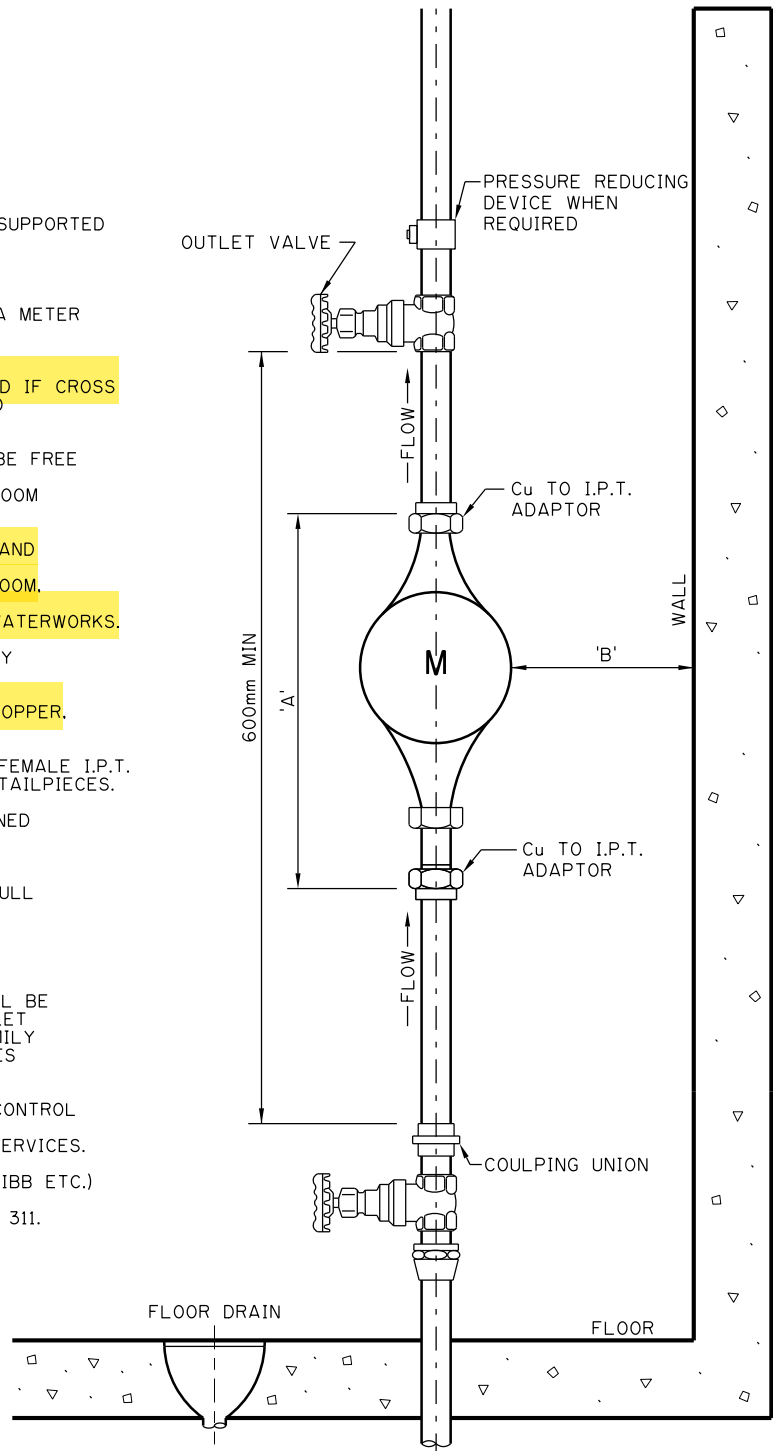
## TYPICAL METER SETTING USING PEX OR COPPER PIPE

\*NEW REQUIREMENT - SEE NOTE 13

METER SIZE	'A' mm	'B' MAX.mm	'B' MIN.mm
15-20mm	362	1000	300
25mm	413	1000	300

### NOTES:

1. PIPING ON EACH SIDE OF METER MUST BE ADEQUATELY SUPPORTED TO THE SATISFACTION OF THE WATERWORKS
2. PIPING FOR METER MUST BE ON A VERTICAL PLANE.
3. MINIMUM DISTANCE OF 300mm BETWEEN ANY WALL AND A METER OR METER TREE.
4. VALVES ARE REQUIRED ADJACENT TO METERS (INLET AND OUTLET SIDE). OUTLET VALVE NOT REQUIRED IF CROSS CONNECTION CONTROL DEVICE C/W VALVES IS INSTALLED WITHIN 1m OF METER.
5. THE AREA FOR 600mm IN FRONT OF THE METER SHALL BE FREE OF OBSTRUCTION TO ALLOW FOR CONVENIENT READING AND SERVICING OF THE METER. 2 METER HEADROOM MUST BE PROVIDED IN THIS AREA.
6. METERS MUST BE INSTALLED IN THE MECHANICAL ROOM AND WITHIN REASONABLE DISTANCE OF A FLOOR DRAIN. IN NO CASE SHALL A METER BE INSTALLED IN A BATHROOM, BEDROOM, CRAWL SPACE, GARAGE OR UNDER A STAIRWELL. METER LOCATIONS MUST BE APPROVED BY WATERWORKS.
7. METER SPACERS WILL BE SUPPLIED BY CITY OF CALGARY (FOR USE WITHIN CITY LIMITS ONLY) PHONE 268-4020.
8. ALL FITTINGS AND PIPE ARE TO BE BRASS, SOLDERED COPPER, PEX, OR APPROVED ALTERNATE, EXCEPT WHERE NOTED.
9. WHERE SOLDERED VALVES ARE BEING USED, COPPER TO FEMALE I.P.T. ADAPTERS MUST BE SUPPLIED TO ACCOMMODATE METER TAILPIECES.
10. SERVICE VALVES, MAIN VALVES OR ANY OTHER CITY OWNED WATERWORKS APPURTENANCES SHALL BE OPERATED BY WATERWORKS PERSONNEL ONLY.
11. THE MASTER CONTROL AND OUTLET VALVES SHALL BE FULL PORT GATE VALVES OR BALL VALVES AND SHALL CONFORM TO THE NATIONAL PLUMBING CODE OF CANADA (FOR INQUIRIES CALL 311 TO CONTACT THE PLUMBING & GAS SAFETY CODES OFFICER).
12. AN APPROVED CROSS CONNECTION CONTROL DEVICE SHALL BE INSTALLED IMMEDIATELY AFTER THE WATER METER OUTLET VALVE ON ALL COMMERCIAL, INDUSTRIAL AND MULTI FAMILY RESIDENTIAL (3 UNITS OR MORE) SERVICES. FOR INQUIRIES CALL 311 TO CONTACT CROSS CONNECTION CONTROL.
13. AN APPROVED PREMISES-ISOLATING CROSS CONNECTION CONTROL DEVICE SHALL BE INSTALLED IMMEDIATELY AFTER THE WATER METER OUTLET VALVE ON ALL IRRIGATION SERVICES.
14. WATER CONNECTIONS (IE. DRAIN DOWN VALVE OR HOSE BIBB ETC.) SHALL NOT BE PERMITTED BEFORE THE APPROVED CROSS CONNECTION CONTROL DEVICE. FOR INQUIRY CALL 311.



### VERTICAL SETTING

NOTE: PROVIDE 300mm WORKING CLEARANCE IN FRONT OF, AND ON BOTH SIDES OF THE METER SETTING TO FACILITATE INSTALLATION AND SERVICING

DIMENSIONS ARE IN MILLIMETRES UNLESS OTHERWISE NOTED

No.	Date	Revision	App'd

Date	2017/01/09
Scale	N.T.S.
Approved by	<i>AS</i>
for The City of Calgary	

THE CITY OF CALGARY	WATERWORKS CONSTRUCTION
TYPICAL METER INSTALLATION	
15mm, 20mm & 25mm	

Sheet	29A
File Number	453.2000.001

ISC: Unrestricted