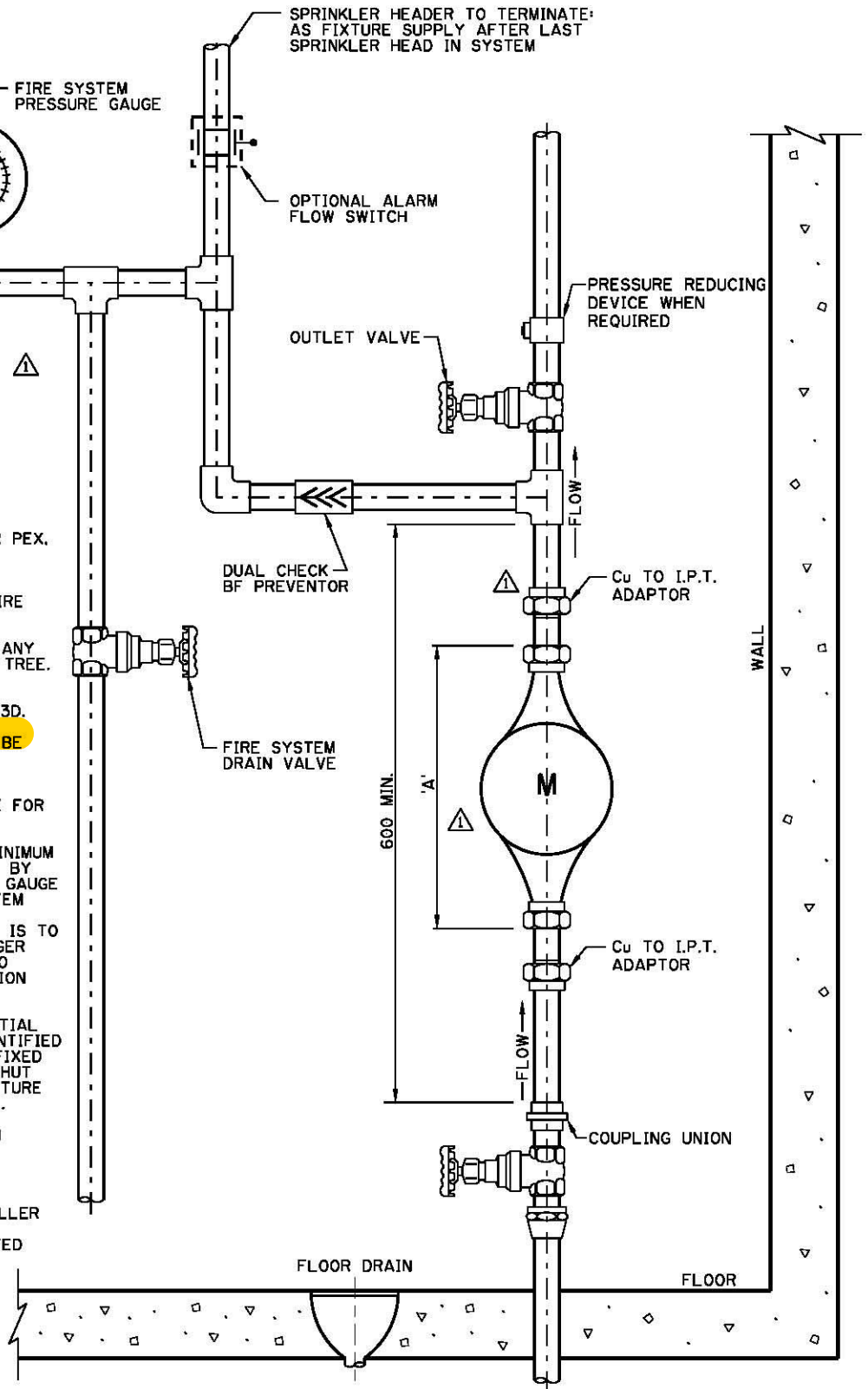


METER SPACER LENGTH	'A'
15mm - (5/8")	190mm
20mm - (3/4")	229mm
25mm - (1")	273mm

NOTES:

1. FIRE SPRINKLER PIPING TO BE CPVC OR PEX, UL/FM AND NSF61 LISTED.
2. DUAL CHECK VALVE, TO BE BACKFLOW PREVENTOR LISTED FOR RESIDENTIAL FIRE SPRINKLER SYSTEM USE TO CSA-B64.6.
3. MINIMUM DISTANCE OF 300mm BETWEEN ANY WALL OR FLOOR AND METER OR METER TREE.
4. FIRE SPRINKLER SYSTEM DESIGN AND INSTALLATION TO COMPLY WITH NFPA 13D.
5. WATER SERVICE AND WATER METER TO BE MINIMUM 25mm.
6. FIRE SPRINKLER SYSTEM DESIGNER TO CONFIRM WATER MAIN STATIC PRESSURE FOR DESIGN USE BY CONTACTING WATER RESOURCES DEVELOPMENT APPROVALS VIA 311. INSTALLER TO VERIFY THAT MINIMUM DESIGN SUPPLY PRESSURE IS ADEQUATE BY INSPECTION OF FIRE SYSTEM PRESSURE GAUGE FOLLOWING INSTALLATION OF THE SYSTEM
7. WHERE RESIDENTIAL SPRINKLER SYSTEM IS TO BE INSTALLED ON WATER SERVICE LARGER THAN 25mm, FIRE SYSTEM INSTALLER TO CONTACT WATER SERVICES METER SECTION VIA 311 FOR METER INFO.
8. WATER SERVICES SUPPLYING A RESIDENTIAL FIRE SPRINKLER SYSTEM SHALL BE IDENTIFIED BY A PERMANENT TAG OR PLACARD AFFIXED EITHER TO THE MAIN WATER SERVICE SHUT OFF VALVE OR TO THE BUILDING STRUCTURE IMMEDIATELY ADJACENT TO SAID VALVE.
9. PROVIDE 300mm WORKING CLEARANCE IN FRONT OF AND ON BOTH SIDES OF THE METER SETTING TO FACILITATE INSTALLATION AND SERVICING
10. METERS ARE SIZED ONE PIPE SIZE SMALLER THAN THE DIAMETER OF SERVICE PIPE INSTALLED UNLESS OTHERWISE SUPPORTED BY DESIGN CALCULATIONS.
11. REFER TO SHEET 29A FOR COMPLETE METER INSTALLATION REQUIREMENTS.



VERTICAL SETTING

DIMENSIONS ARE IN MILLIMETRES
UNLESS OTHERWISE NOTED

No.	Date	Revision
1	2017/03/10	REVISED TABLE, NOTE, TITLE BLOCK, DIM. AND MODIFIED DETAIL

Date	2017/02/08
Scale	N.T.S.
Approved by	<i>AS</i>
App'd	for The City of Calgary

THE CITY OF CALGARY	WATERWORKS CONSTRUCTION
TYPICAL RESIDENTIAL FIRE SPRINKLER CONNECTION 15mm, 20mm & 25mm	

Sheet	29B
File Number	453.2001.001

ISC: Unrestricted

