

Design for Partial Sun

A step-by-step guide on planting a beautiful and low maintenance garden bed for an area of your yard that receives **partial sun.**

This bed has been developed in partnership with The Calgary Horticultural Society using plants that thrive in Calgary. Once established, this garden bed will take little time, effort and water to maintain.

Partially sunny gardens can be a real challenge for a lot of plants, especially when enclosed by fences and walls. They require even tougher plants to handle the intense mid-day sun. The plants in this little garden fit the bill. Once established and kept mulched, these plants are easy to care for and will display interesting colours every season.

Flip over for installation instructions and information on planting, watering and maintenance. >>



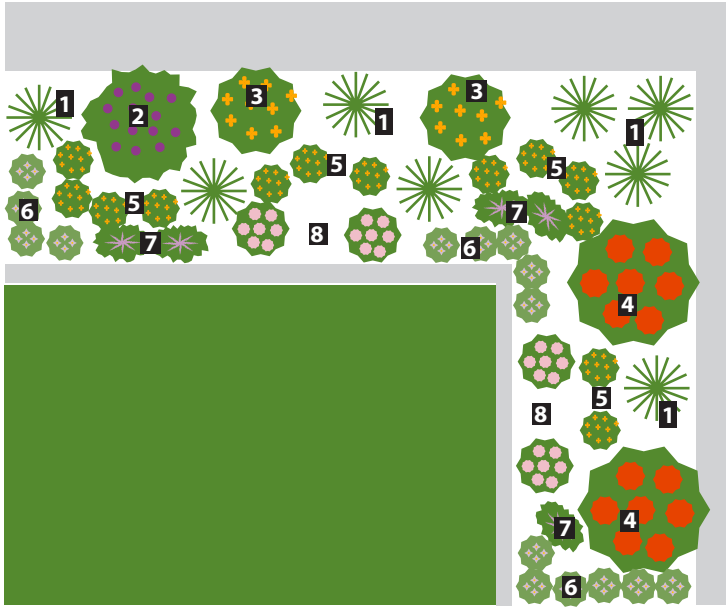
Spring brings the prairie crocus with its soft leaves and lavender blossoms. Mid-summer through to late fall, the garden explodes in a riot of blue globethistle, gold and red daisies, and brilliant red sedum abuzz with bees and butterflies.

In partnership with

CALGARY
HORTICULTURAL
SOCIETY

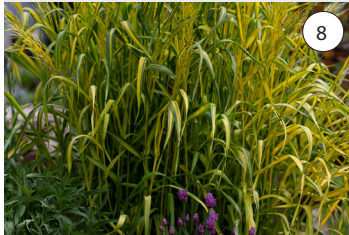
Design for Partial Sun

Based on a garden 5.3 m (17'5") by 4.2 m (13'4")



Flower name Quantity

1 Feather Reed Grass



8

2 Globe Thistle



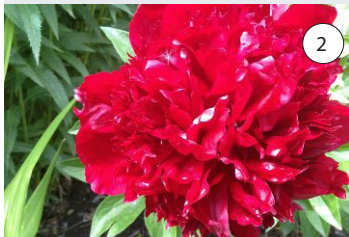
1

3 False Sunflower 'Burning Hearts'



2

4 Peony 'Buckeye Belle'



2

5 Blanket Flower



17

6 Pulsatilla - Prairie Crocus



15

7 Dwarf Catmint



5

8 Autumn Tall Sedum



6

Enjoy a garden bed that will contribute to the beauty and resiliency of your yard and community

In the face of the pressures brought on by a changing climate and a growing city, a YardSmart yard needs less water and will stay beautiful in times of both hotter and wetter weather. Water efficiency helps citizens, businesses and our city overall build resiliency to drought. Planting a YardSmart yard also helps to keep water on your property so less dirt and contaminants wash into the rivers through the storm drains.

Tips for successful planting

Before you begin:

- Use the YardSmart Planning and Design Guide at calgary.ca/YardSmart to ensure this design suits your yard conditions.
- Use a good depth of quality soil.

5. Place plant in hole and fill with soil. Ensure the base of the plant stem is level with the ground. Water well.
6. Add a layer of mulch, keeping it away from the stem of the plant.

3 Ways to Remove Lawn

1. In fall, smother the lawn by covering with several layers of damp newspaper, or cardboard. Top with compost or soil to keep wet. Plant in the springtime.
2. Dig up the sod, flip it over so the grass is facing downwards, and cover with soil so no grass shows. Let sit for a month. Top with compost or new soil before planting.
3. Put a 10 cm layer of compost and new soil on top of the grass to smother it. Ideally, wait a few weeks for grass to die, or plant right away ensuring there is no grass exposed after planting.

Water requirements

- Keep perennials well-watered for the first year or two (approx. 2.5 cm water/week or until soil is moist to the base of the root system, 1-2 inches down).
- Shrubs need regular watering for the first 2-3 years. Use a drip hose spiralled around the root area to irrigate. Every week, 15-20 minutes is sufficient.
- In following years, all plants will be drought tolerant and only need water after 2-3 weeks of hot dry weather with little to no rainfall.

Reminders

- Keep soil covered with mulch and remove weeds.
- Fast growing plants usually require division every 3-5 years.
- How to winterize:
 - Leave perennial foliage until spring to catch snow and provide food and shelter for birds and beneficial insects.
 - Fallen leaves make great mulch so can be left in garden beds.
 - For shrubs, water well in the fall until the ground freezes.

How to install a garden bed

1. Ensure the plants and the area to be planted are watered well.
2. Lay the plants out on the prepared bed following the planting map provided. Space them according to the tags' description of plant width at maturity.
3. Dig the holes approximately twice the width of the pot and the same depth.
4. Remove the plant from its pot and carefully loosen and remove some of the soil so the roots can be spread outwards.

Learn more tips at calgary.ca/YardSmart