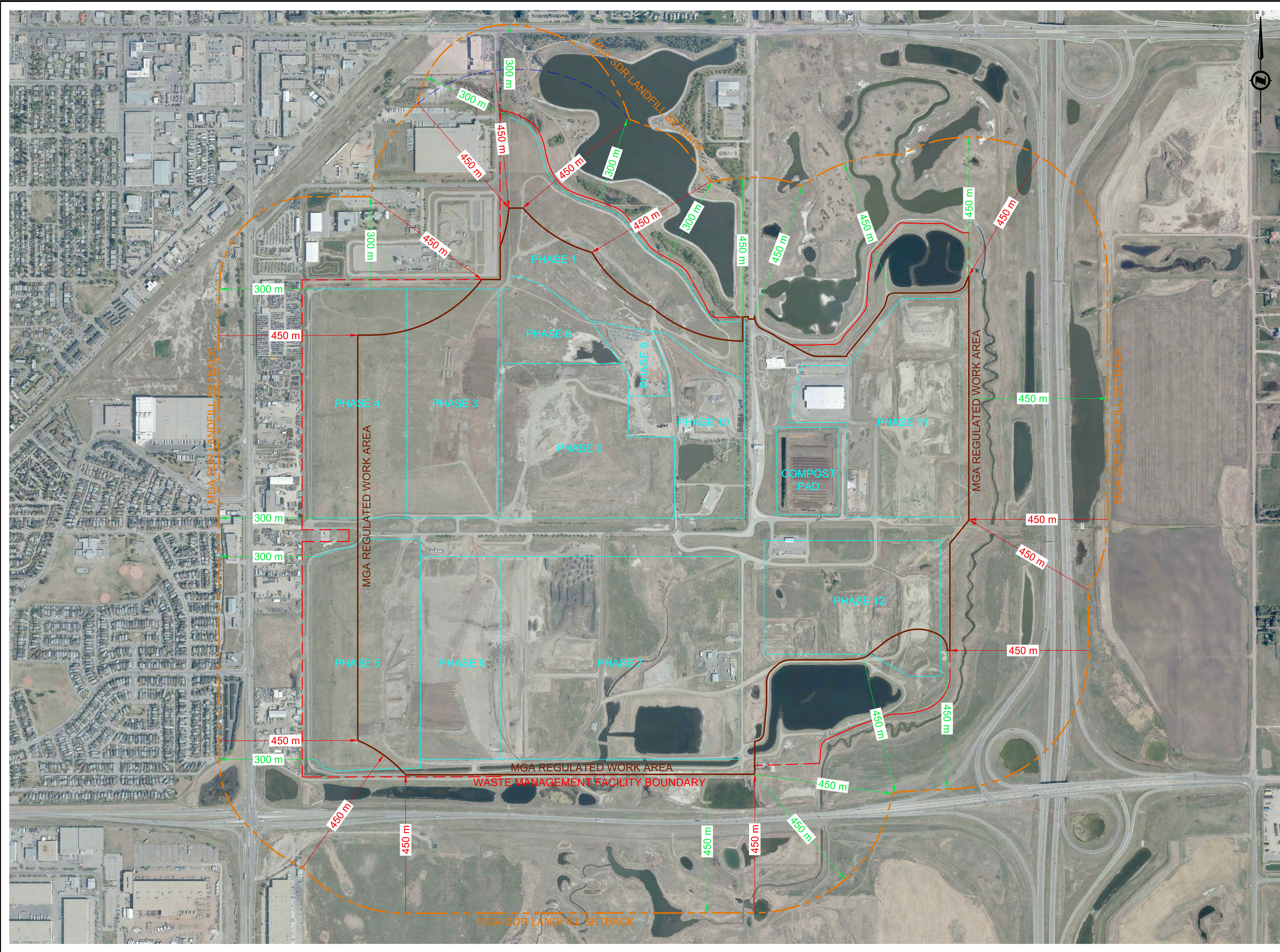


FILE: W:\P\DRAWING\DATA\EST\CALGARY\2598003.DWG [DATE: Tuesday, September 19, 2017 5:32 AM]



NOTES

1. ALL COORDINATES AND DISTANCES ARE BASED ON 3TM COORDINATE SYSTEM (NAD 83).
2. ORTHOPHOTO: SEPTEMBER 2016.

ALBERTA CALL
CALL BEFORE YOU DIG
1-800-242-3447

NAD 83
COORDINATES

ALL PIPE SIZES ARE IN MILLIMETRES AND ALL DIMENSIONS ARE IN METRES UNLESS OTHERWISE NOTED

NO.	DESCRIPTION	DATE (YYYY-MM-DD)	BY	APPD
1	---	-	-	-

DISCLAIMER: THIS MAP IS INTENDED TO PROVIDE USERS GUIDANCE ONLY ON LANDFILL SET-BACKS. USERS ARE ADVISED TO CONSULT THE CITY OF CALGARY FOR PROJECT SPECIFIC REQUIREMENTS. CONFIRMED AS CORRECT AS AT SEPTEMBER 15, 2017 BUT ARE SUBJECT TO CHANGE.

SIGNATURE (DIRECTOR OF WASTE & RECYCLING SERVICES, THE CITY OF CALGARY)

Rh. Uell.

	BY	DATE (YYYY-MM-DD)
DESIGNED	GL	2017-06-21
DRAWN	FS	2017-06-21
CHECKED	GL	2017-06-21

SCALE: 1:6000



PROJECT: EAST CALGARY WASTE MANAGEMENT FACILITY

SEC: 1, 2, 11, 12 - TWP: 24 - RGE: 29 - W 4th M

SHEET TITLE: MGA SDR LANDFILL SETBACK

FILE NO. 2598003.DWG	MICROFILM NO.
SHEET NO. -	SHEET COUNT 1 of 1