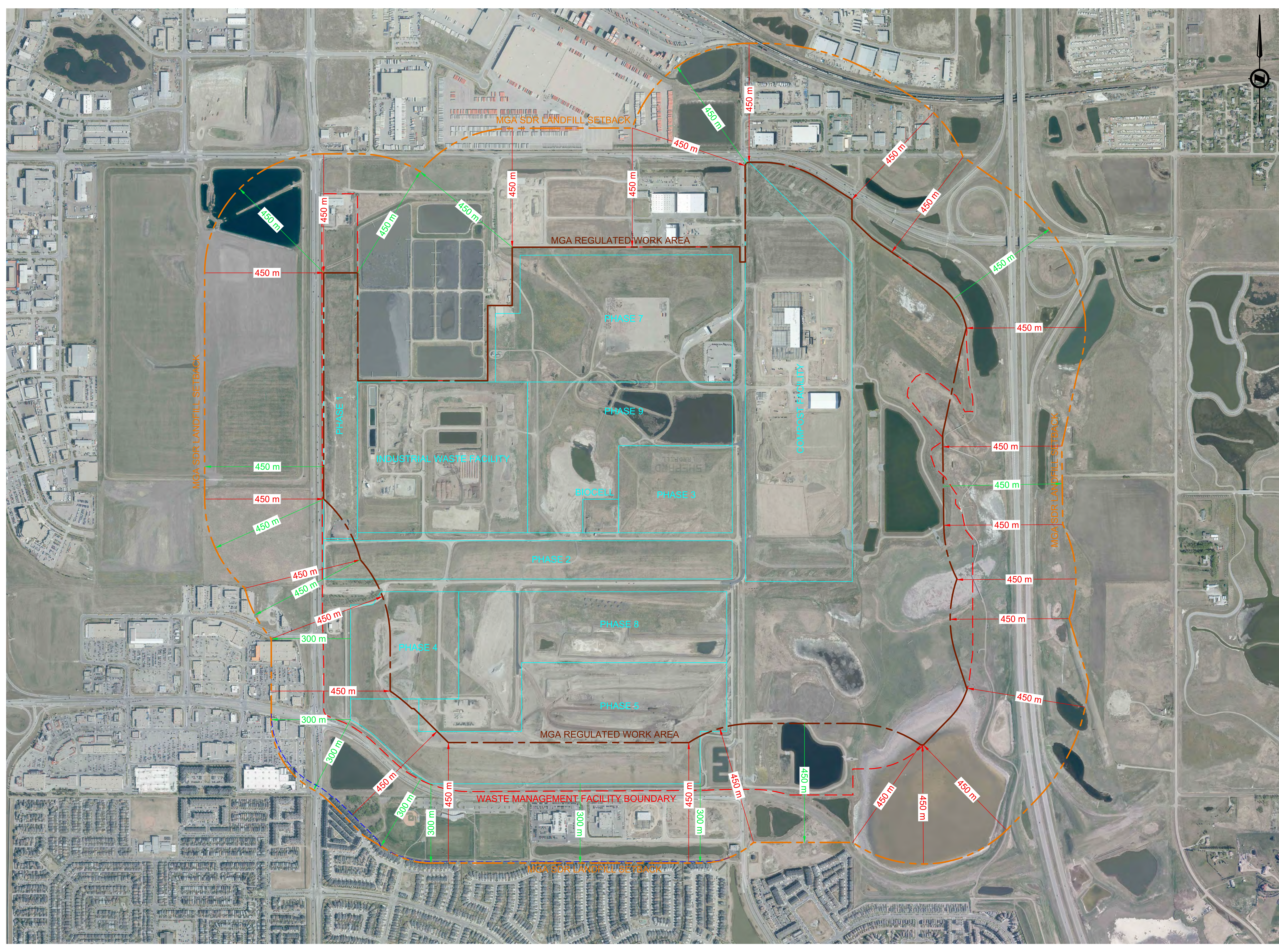


FILE: W:\P\DRAWING\DATA\SHEPARD\3554000\DRAWING\3554002.DWG DATE: Tuesday, September 19, 2017 4:50:06 AM



NOTES

1. ALL COORDINATES AND DISTANCES ARE BASED ON 3TM COORDINATE SYSTEM (NAD 83).
2. ORTHOPHOTO: SEPTEMBER 2016.

ALBERTA CALL
CALL BEFORE YOU DIG
1-800-242-3447

NAD 83
COORDINATES

ALL PIPE SIZES ARE IN MILLIMETRES AND ALL DIMENSIONS ARE IN METRES UNLESS OTHERWISE NOTED

NO.	DESCRIPTION	DATE (YYYY-MM-DD)	BY	APPD
1				

DISCLAIMER: THIS MAP IS INTENDED TO PROVIDE USERS GUIDANCE ONLY ON LANDFILL SET-BACKS. USERS ARE ADVISED TO CONSULT THE CITY OF CALGARY FOR PROJECT SPECIFIC REQUIREMENTS. CONFIRMED AS CORRECT AS AT SEPTEMBER 15, 2017 BUT ARE SUBJECT TO CHANGE.

R. K. Vell

SIGNATURE (DIRECTOR OF WASTE & RECYCLING SERVICES, THE CITY OF CALGARY)

	BY	DATE (YYYY-MM-DD)
DESIGNED	GL	2017-06-21
DRAWN	FS	2017-06-21
CHECKED	GL	2017-06-21

SCALE 1:7000

Calgary

WASTE & RECYCLING SERVICES

PROJECT

SHEPARD WASTE MANAGEMENT FACILITY

SEC: 1, 2, 11, 12 - TWP: 23 - RGE: 29 - W 4th M

SHEET TITLE

MGA SDR LANDFILL SETBACK

FILE NO. 3554002.DWG	MICROFILM NO.
SHEET NO. -	SHEET COUNT 1 of 1